

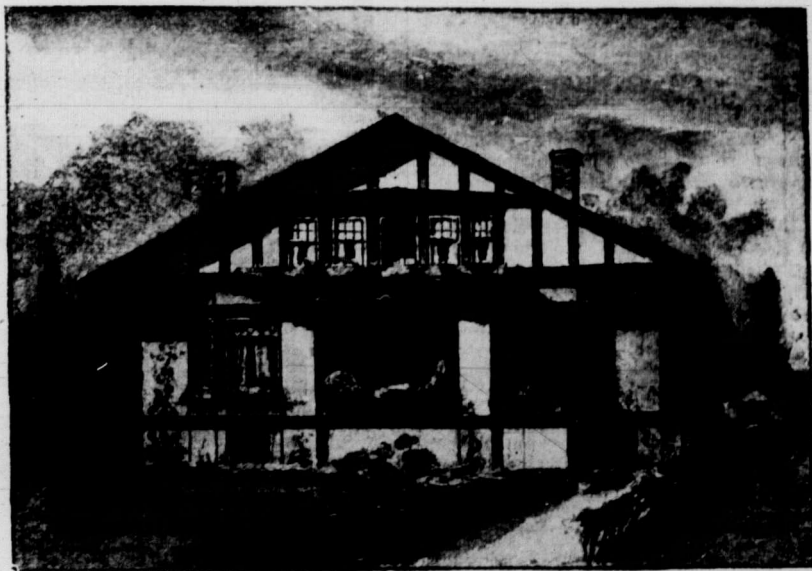
Another Charming Farm Home

When The Guide published last January an illustration of a house with floor plans and an offer of a bill of materials and working drawings at a purely nominal cost, it was frankly an experiment. The management was curious to know whether farmers would be interested in having houses planned for them by people who are in intimate touch with farm conditions. Great pains were taken to make this Guide house economical, practical and attractive.

The result has been most gratifying. It has been demonstrated that farmers do care for beautiful homes, when beauty is applied to practical farm conditions. A visiting contributor

also, you will observe that the porch fits into the design as an integral part of it. It will be seen, too, that the porch has been placed so that none of the windows are shaded from the sunlight. In this country, where we have only about three months really warm weather, and nine months of moderate or cold weather, it seems a great pity to shut out the sunlight from the principal rooms with porches or verandahs.

Each of the two principal rooms is lighted from three sides and has a wide bay window across the front. The hall has been placed at the back of the house because, in the winter time, everyone drives up to the back door. With this back hall guests do not have to come



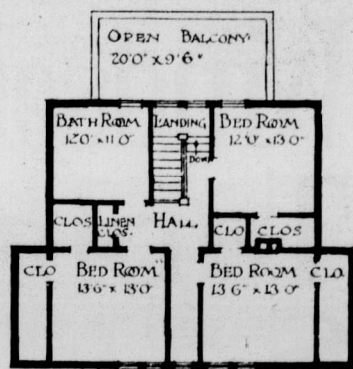
A house in which beauty and utility are cleverly combined

dropped in to purchase a set of the house plans and was informed that this dainty little house was sent forth with considerable misgiving because farmers mostly built the big square style of house. Said she, "We have had no alternative in the past. It is the only kind that has been offered to far-

in thru the kitchen, but can be taken into the bedroom or upstairs to lay off their things and then shown into the front room. On a busy wash day, when the house is all upset this is a very great boon to the housewife. It has been arranged to have the wash room placed so that the men can come into it from outside and can leave their dusty smocks and their muddy boots, changing them for a house coat and shoes and thereby saving endless sweeping and dusting in the house proper. With this plan also it is possible for the hired men to come in and go upstairs without going into or passing the front room where company is being entertained, which is more pleasant for both the hired man and his employer.

It often happens in country homes when one is giving a party that the people, as they arrive, have to pass thru the kitchen where a lot of men are standing around chatting and smoking. With this house plan the guests can be shown to the downstairs bedroom or upstairs without having to encounter any of the other guests until they have disposed of their wraps.

The downstairs bedroom was introduced into this plan because it seems to be such a popular feature in the country house, and to provide the ex-



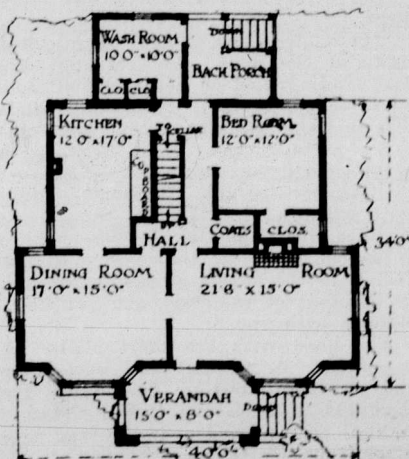
PAUL M. CLEMENS ARCHT. WINNIPEG, CANADA. SECOND-FLOOR PLAN

mers." She and her husband had paid to have plans drawn up, but when they saw The Guide house they threw away their own plans and adopted it.

Altogether our readers have made it clear in no uncertain manner that they do appreciate attractive homes and intelligent planning of the country house.

So The Guide has had another house plan prepared for its readers, which, while it is no less delightful and practical than the first house, is designed for a larger family. It is a rather difficult problem, this of making a house roomy in its interior arrangements and, at the same time, preserving the quality of hominess which is the peculiar characteristic of the small house, but it must be admitted that the architect, Paul Clemens, has succeeded admirably in this instance.

You will notice the pleasing effect produced by the long unbroken sweep of the roof lines, the well balanced grouping of the windows, the freedom from the silly and unnecessary ornament which always cheapens the appearance of a building. In this house



PAUL M. CLEMENS ARCHT. WINNIPEG, CANADA. FIRST-FLOOR PLAN

tra bedroom space for which a number of contributors asked us in criticizing the last plan. In that respect this plan

ROYAL Yeast Cakes

BEST YEAST IN THE WORLD.
DECLINE THE NUMEROUS INFERIOR IMITATIONS THAT ARE BEING OFFERED
AWARDED HIGHEST HONORS AT ALL EXPOSITIONS
E.W. GILLET COMPANY LIMITED.
WINNIPEG TORONTO ONT. MONTREAL

Co-operation

THIS is the age of co-operative buying. Send us your address and let us tell you how to buy by this plan. The Flour that is always good.

Daily Capacity
300 Barrels

ECHO MILLING COMPANY
GLADSTONE, MAN.



Bell PIANOS and ORGANS

KNOWN AND USED THROUGHOUT THE WORLD

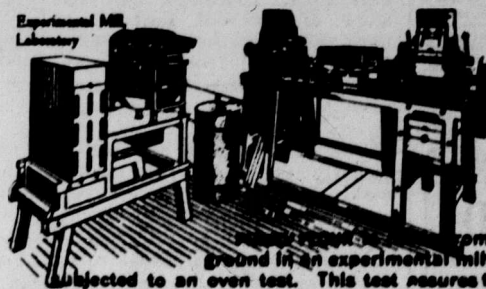
Write for Catalogue and Price List

SASKATOON PIANO CO. LTD.
Sole Agent for Saskatchewan

Write Us for Bargains in Used Pianos.

Terms to Suit Purchaser

Cut Your Living Cost



By using more PURITY FLOUR and less of the expensive foods, you can reduce your cost of living considerably. White flour is more nutritious and cheaper than any other food, according to careful laboratory tests.

From wheat of which samples are first ground in an experimental mill. The flour thus obtained is then subjected to an oven test. This test assures the housewife of a uniform product.

PURITY FLOUR

3 More Bread and Better Bread

Advertisers in The Guide

are in position to give good service to you and your family. The Guide will not knowingly carry the advertising of any unreliable concern. In writing to the advertiser, be sure to mention that you saw his announcement in The Guide, Winnipeg. It will insure good service.