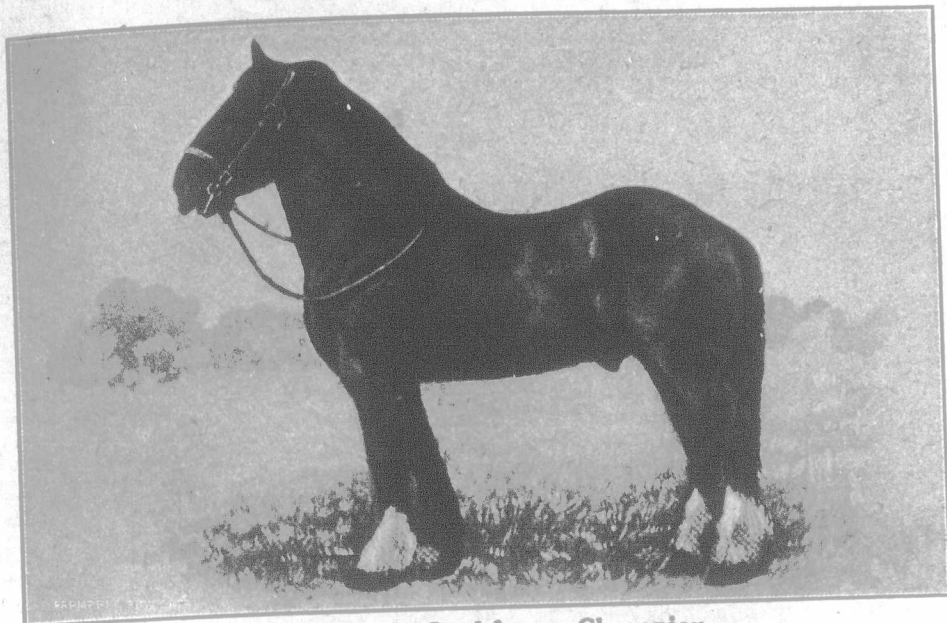
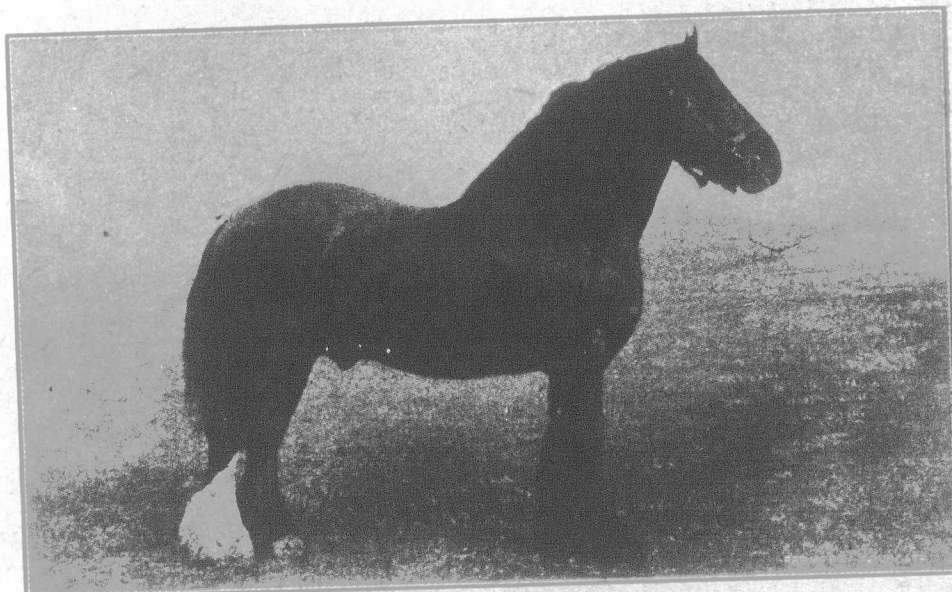


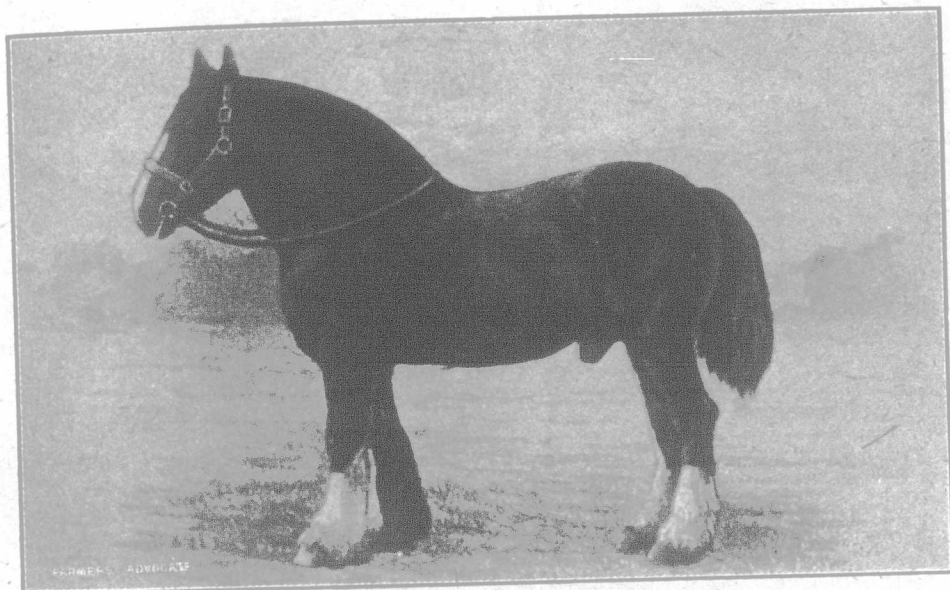
PROGENITORS AND PROGENY OF BARON'S PRIDE.



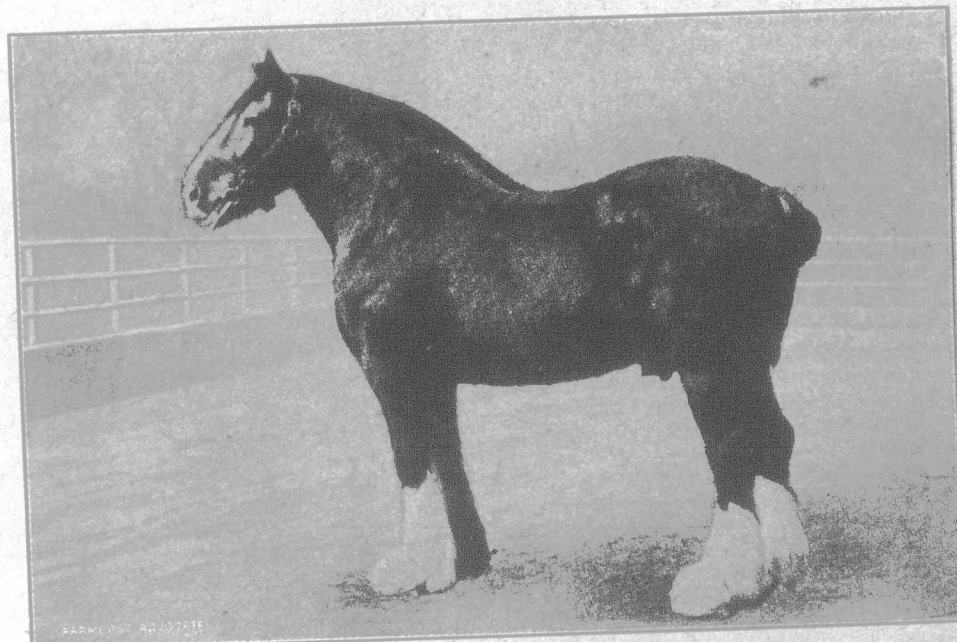
Conqueror by Lochfergus Champion.



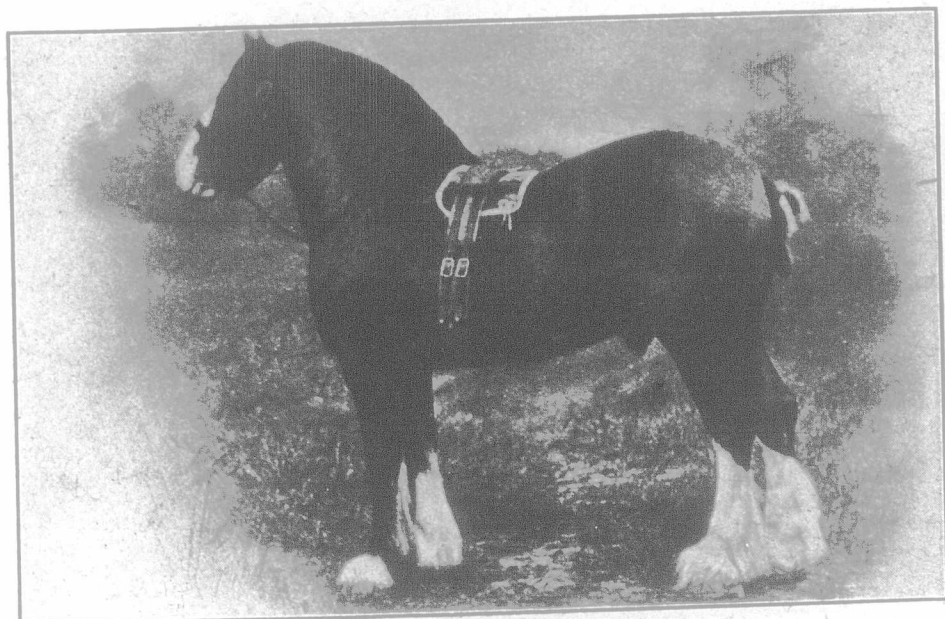
Darnley by Conqueror.



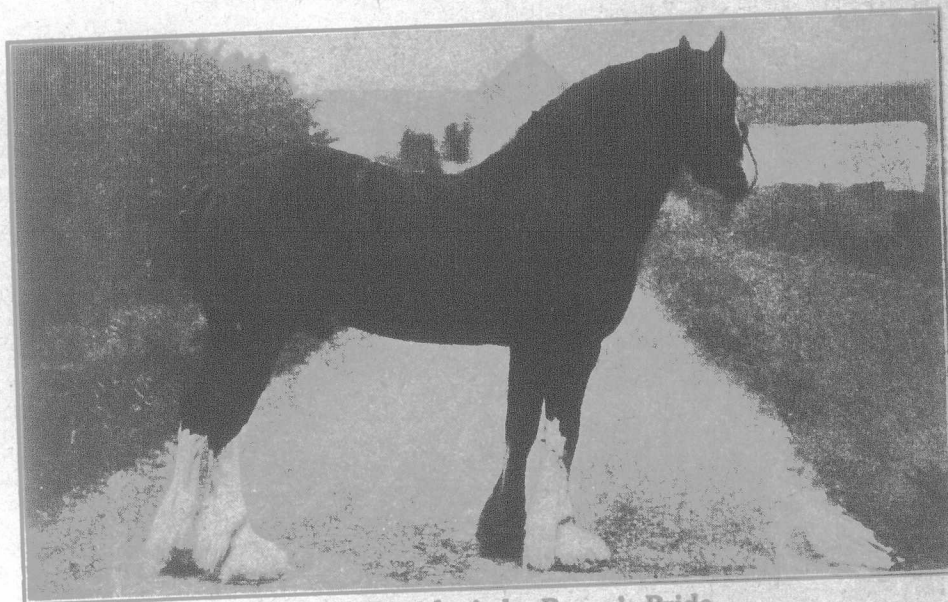
Top Gallant by Darnley.



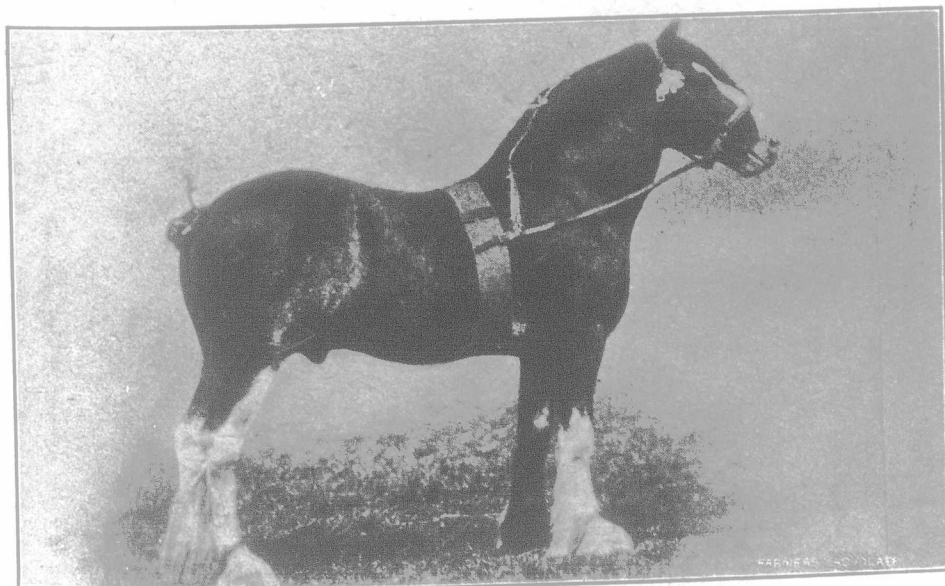
Sir Everard by Top Gallant.



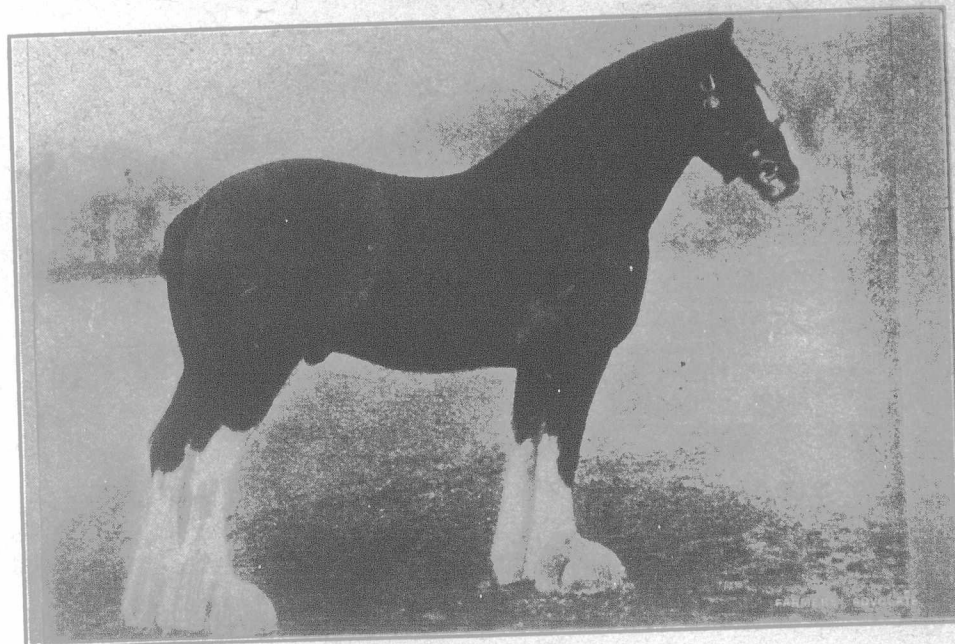
Baron's Pride by Sir Everard.



Baron of Buchlyvie by Baron's Pride.



Dunure Footprint by Baron of Buchlyvie.



Kismet by Dunure Footprint.

horses, whether
Shetland
respect to cattle,
 Angus, Galloway,
 or what; in re-
 Leicester, Black-
 what, and how
 gs and poultry.
 retains a hold
 respect to horses,
 orting committee,
 board's Register
 fitness, and the
 hich the officials
 t certain of the
 being sold are
 ed by the Board
 e horses we are
 show the *modus*
 Stock Improve-
 ratively recent
 been instituted
 rms for horses
 Stock Improve-
 be put down as
 rice and £2 ad-
 A horse with
 serving eighty
 to his owner an
 Chief 19177, at
 st, with an en-
 y public auction
 . He was only
 ly given satis-
 weeks been re-
 enhanced terms
 this season.

ditions apply to
 ng of the Small-
 ure the benefits
 ct confers upon

existence for at
 that Act. The
 rganized in a
 ay they all seek
 y organizations
 es the district
 rganize shows
 the interests of
 hiring of travel.
 This is the case
 , which for at
 uple of stallions
 aguely defined
 ict around the
 ver, the district
 y, which exists
 ore Clydesdale
 a for the service
 ety, or to stand
 tain days of the
 horse travels by
 few cases he is
 e other. This
 the Northern
 d the Scottish
 e are societies
 area, who are
 e of the highest
 res. The first
 inties of Inver-
 and the horse
 y rail can be be
 The second-
 ts members in
 uross, Fife, and
 and worthy of
 il from one place
 when they have
 ay. Regarding
 journey of ten
 th rest on the

societies obtain
 pays an annual
 er obligation to
 oy the Selection
 ld he fail to do
 he Society the
 . The stallion
 on to subscribe
 if it may be 5s.
 Consequently
 that the stallion
 rlasting 11331,
 ybody who has
 gnificant horse
 earling and two-
 l speculatively
 ns—that is, as
 In these two
 ic sire, and his
 ured his being
 uring these two
 st two seasons
 and took good
 on the list of
 results. A year
 ters were breed-
 e castrated were
 in high favor
 y years until