

'Direct Action' claims responsibility for Rexdale bombing

MONTREAL (CUP)—A group calling itself Direct Action is claiming responsibility for the Oct. 14 bombing of Litton Systems in Rexdale, Ontario.

Direct Action distributed a communique in Toronto and Montreal Oct. 20 justifying the bombing and apologizing for injuring seven people in the blast.

The Litton plant produces guidance systems for Cruise missiles. The Cruise missile flies low enough to escape radar detection. Peace activists claim it could be used in a surprise first-strike attack, and this capability increases the risk of nuclear war.

"We sincerely regret that any injuries occurred as a result of this action," stated the Direct Action communique. "We never intended to harm anyone. We do not regret, however, our decision to attempt to sabotage the production of the Cruise missile guidance 'brain'."

Metro Toronto police believe the news release is authentic. According to police spokesperson Constable Fontaine, the facts stated in the communique are consistent with what may have happened.

"We're treating it seriously until we hear otherwise," he said.

A similar communique claiming responsibility for last May's bombing of transformers in a Vancouver Island power plant was issued this summer. A group with the same name has claimed responsibility for a series of bombings in France.

"No connection has yet been established between the bombings in France, B.C. and Toronto," said Fontaine.

Peace activists in Toronto and Montreal denied involvement in Direct Action.

"There are no links at all between us and them," said Shelagh

Nevney of the Montreal Committee to Oppose the Cruise. "These types of action breed violence and further violent actions...and we totally dissociate ourselves from violent action," he said.

The Committee to Oppose the Cruise is one of many groups involved in organizing for a massive demonstration in Ottawa Oct. 30 against the deployment of Cruise missiles.

Ken Morrison of McGill University Project Ploughshares said that although the group as a whole would condemn the bombing, he personally thought it had some merit.

"Ploughshares would dissociate themselves from this action," he said. "Some would think it hypocritical to protest the nuclear arms race through bombing and violent action."

"But someone working at Litton is involved in the arms race; it's direct action. This was a good advertisement to show Canada is involved in the arms race," he said.

"The guidance mechanism for the missile is what makes it important. It's used for nuclear, mechanical and biological warfare. A major part of Canada's research budget is spent on defense," said Morrison.

"It's a pity that to make headlines you have to resort to National Enquirer-type sensationalism." Morrison predicted the bombing might lead to violence between police and demonstrators at the peaceful civil disobedience actions at the Litton plant planned for November.

The Direct Action communique regards clashes as inevitable.

"There is every reason imaginable to tear down the system and

makers of nuclear war," states the communique.

"Though we have no illusions that direct actions such as this one can by themselves bring about the end of Canada's role as a resource base, economic and military functionary of western imperialism, we do believe that militant actions are valid and necessary."

According to Direct Action, the bomb went off 12 minutes earlier than planned, and Litton guards and police failed to evacuate the building after receiving a warning by telephone.

"We did not commit inexcusable errors," stated the communique.

"We can only claim in all honesty that this action was never meant to be an act of terrorism. The terrorists are those who have set the world on the brink of nuclear war, not those who are fighting this insanity and inhuman madness."

You'll be Home for CHRISTMAS
with a low-cost TRAVEL CUTS flight!

TORONTO \$299

VANCOUVER \$119

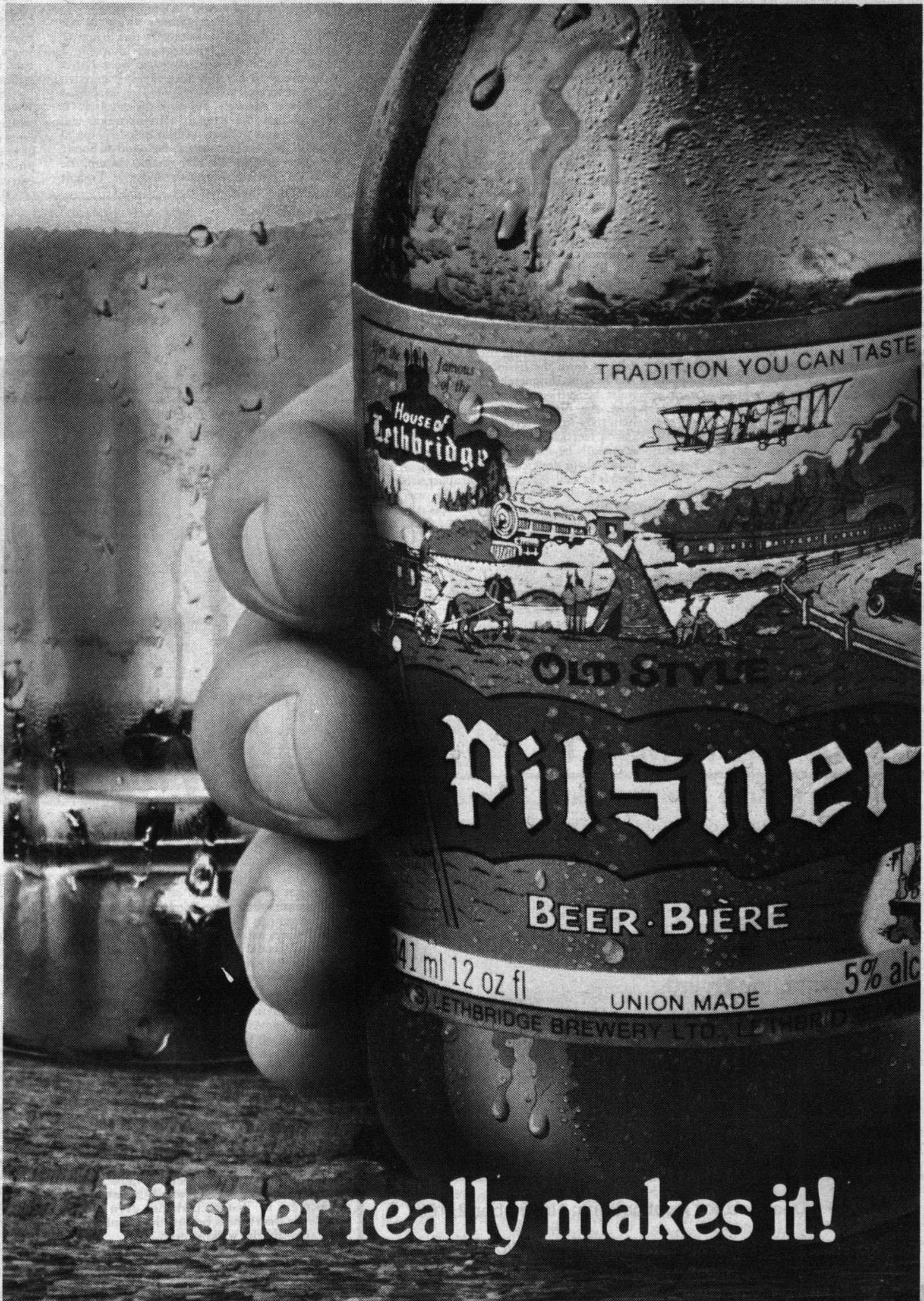
Going **TRAVEL CUTS**
YourWay!

The travel company of CFS
TRAVEL CUTS EDMONTON
U of A, Student Union Building
403 432-2592

For Advertising information and rates please contact Tom Wright or Margriet West 432-4241

STUDENT PARKING SPECIAL
covered parking with plug-in available \$15.00 per month close to campus

Contact: Ken Welsh 423-4789.
After 6 pm. Sue-Ann 432-0479, Wed. - Sat. 10622 - 82 Ave.



Pilsner really makes it!