

# POOR DOCUMENT

# MC 2035

THE EVENING TIMES AND STAR, ST. JOHN, N. B., SATURDAY, DECEMBER 17, 1921

13

## SHOPS YOU OUGHT TO KNOW

Designed to place before Our Readers the Merchandise, Craftsmanship and Service Offered by Shops and Specialty Stores.

### AUTO STORAGE

R STORAGE FOR WINTER—Phone 3629, Fred Cairns, corner Duke Westworth. 17010-12-19

TO STORAGE FOR 30 CARS of running for winter months, "at reduced rates" centrally located. Phone 1682-11.

STALLS TO LET. CARS washed; repaired—At Thompson's, 54 1/2 street. Phone 663.

### BABY CLOTHING

875 BEAUTIFUL LONG gowns, daintily made of the finest material, everything required; ten dollar complete. Send for catalogue. Mrs. Mason, 512 Yonge street, Toronto. 11-1-1921

### BARGAINS

IGAINS IN READY-TO-WEAR made to measure overcoats and suits this month—W. J. Higgins & Co., Union St.

TO WETMORE'S GARDEN ST. Christmas presents. Big variety of all and fancy goods.

### DRESSMAKING

H CLASS DRESSMAKING and alterations. Special attention given to evening gowns—223 Duke, Phone 17289-12-20

### DANCING

WANTER TO TEACH YOU to dance, One Step and Fox Trot in 10 minutes. Apply on premises any afternoon or evening—Prince Edward Academy, 210 Prince Edward. 17354-12-24

### DYERS

CE TO MOURNERS—FAST and returned in 24 hours. Phone New System Dye Works.

### ENGRAVERS

ING INVITATIONS, AN- nouncements and Cards. For correct and stylish see A. G. Plummer, 7 1/2 street, up-stairs.

WESLEY & CO. ARTISTS engravers, 59 Water street. Tel. 10-108.

### FILMS FINISHED

TO ANY ROLL OF FILM WITH c. to Wasson's, P. O. Box 1945, St. J. N. B., for a set of pictures. Quick. Satisfaction guaranteed.

### FURNITURE REPAIRED

GOODS MADE NEW—FURNITURE repaired, upholstered and re- polished. Also cabinet work, nearly all styles. At the Veteran Repairer, 160 City Road, Phone M 341. 17023-12-20

### HATS BLOCKED

DIES VELVET, BEAVER AND silk hats blocked in the latest style. F. R. James, 280 Main street, opposite Adelaide St.

### IRON FOUNDERS

ION FOUNDRY AND MACHINE works, Limited. George H. Watling, 307 St. John, N. B. Engineers. Machine, Iron and Brass Foundry.

### JACKSCREWS

K-SCREWS FOR HIRE AT RE- duced rates, per day or otherwise. 277 street. Phone Main 1284. 17-19-1922

### LADIES' TAILORING

H CLASS LADIES' AND GENTS' suits \$35 to \$60. We refine and re-furnish—Morin, 52 Germania.

### MATRESS REPAIRING

L KINDS OF MATRESSES AND cushions made and repaired. Wire springs re-stretched. Feather beds re-made. Upholstering done. Twenty-five years' experience. Walker J. Lamb, 82 British street, in 897.

### MEN'S CLOTHING

S CLOTHING, OVERCOATS—have in stock some very fine Over- coats, well made and trimmed and sell at a low price from \$30 up. W. J. Higgins & Co., Custom and Ready-to- wear Clothing, 138 Union street.

### MONEY ORDERS

D A DOMINION EXPRESS money Order. They are payable every- where.

### MONEY TO LOAN

NEY TO LOAN ON APPROVED security or freehold securities. Ken- nedy A. Wilson, Barrister, etc., 45 Can- bury street. 17351-12-21

### PAINTS

B BRAND PAINTS, \$2.50 TO \$4.00 per Gallon. Send for Color Card. See News. 1-10

## FINANCIAL

NEW YORK MARKET.  
(By Direct Private Wire to McDougall & Cowans, 58 Prince William street, city.)

Open	High	Low
Allied Chem.....	87 1/4	87 1/4
Am Can.....	82 1/2	82 1/2
Am Locomotive.....	95 1/2	95 1/2
Am Int Corp.....	43	43
Am Sugar.....	53 1/4	53 1/4
Am Wool.....	81	81
Am Smelters.....	45 1/2	45 1/2
Am Smatra.....	31 1/4	31 1/4
Atchafon.....	91 1/2	91 1/2
Am Telephone.....	117 1/4	117 1/4
Atlantic Gulf.....	33 1/2	33 1/2
Beth Steel.....	86 1/2	86 1/2
Bald Locomotive.....	97	97
B & Ohio.....	38 1/2	38 1/2
Can Pacific.....	122 1/2	122 1/2
Com Products.....	96 1/2	96 1/2
Ches & Ohio.....	56	56
Cuban Cane.....	67 1/2	67 1/2
Cuban Cane Pfd.....	14 1/2	14 1/2
Crucible Steel.....	67 1/2	67 1/2
Gen Leather.....	80 1/2	80 1/2
Gen Motors.....	50 1/2	50 1/2
Gen Common.....	10 1/2	10 1/2
Eastcott John.....	78 1/2	78 1/2
Gen Motors.....	11 1/4	11 1/4
Great Nor Pfd.....	74 1/2	74 1/2
Imperial.....	41 1/2	41 1/2
Indeville.....	11 1/4	11 1/4
Inter Paper.....	55 1/2	55 1/2
Indus Alkali.....	88	88
Kelly Spring.....	48 1/2	48 1/2
Kennecott.....	27 1/2	27 1/2
Mex Pete.....	116 1/2	116 1/2
Midvale.....	28 1/2	28 1/2
Mid States Oil.....	14 1/2	14 1/2
Am Pacific.....	117 1/4	117 1/4
N. Y. N. H. & H.....	12 1/2	12 1/2
North Am Co.....	43 1/2	43 1/2
Rock Island.....	32 1/2	32 1/2
Pennsylvania.....	33 1/2	33 1/2
Pan American.....	55 1/2	55 1/2
Pacific.....	40 1/2	40 1/2
Reading.....	71 1/2	71 1/2
Retail Stores.....	83	83
Rock Island.....	32 1/2	32 1/2
Roy Dutch N. Y.....	62	62
St. Paul.....	19 1/2	19 1/2
Sindair Oil.....	80 1/2	80 1/2
Southern Pacific.....	80 1/2	80 1/2
Southern Ry.....	19 1/2	19 1/2
Studebaker.....	81 1/4	81 1/4
Utah Copper.....	63 1/2	63 1/2
Union Oil.....	20	20
Union Pacific.....	126 1/2	126 1/2
United Drug.....	71 1/2	71 1/2
U S Steel.....	84 1/2	84 1/2
U S Rubber.....	55 1/2	55 1/2

### MONTREAL MARKET.

Abithill—85 at 80.	Atlantic Sugar—105 at 25 1/2, 25 at 25 1/2.	McDonalds—25 at 12.	Brompton—10 at 21 1/2.	Canadian—100 at 25 1/2, 10 at 25 1/2.	Steel Canada—100 at 25 1/2, 10 at 25 1/2.	Wayman—30 at 25 1/2.	1922 Victory Loan—99.40, 99.45.	1927 Victory Loan—99.40, 99.45.	1928 Victory Loan—100.10, 100.10.	1929 Victory Loan—98.15.	1934 Victory Loan—97.55, 98.00.
--------------------	---	---------------------	------------------------	---------------------------------------	---	----------------------	---------------------------------	---------------------------------	-----------------------------------	--------------------------	---------------------------------

## RISK OF DEATH AT SEA SLIGHT

In Ocean Liner Placed at .02 per cent. — Research by Lloyds' Chief Surveyor.

London, Dec. 17.—(By Canadian Press).—That dream of the ages—the unsinkable ship—has not yet been evolved, though shipbuilders, shipbuilders and marine underwriters have labored and still are laboring on the problem. Safety on the sea, however, has reached the point where the risk of death to a passenger on an ocean liner is placed at .02 per cent. The chance of a casualty occurring to a passenger ship and involving loss of life is placed at 1.2 per cent. These estimates are given by Sir Westcott Abell, the chief ship surveyor of Lloyd's Register of Shipping, after careful investigation, the result of which has been published in the Times. Sir Westcott Abell has taken the twenty-three years between 1890 and 1918 for the purpose of his inquiries. He does not deal with the war years, because during that period abnormal losses due to enemy action figured very prominently. The result of his research appears to leave no doubt whatever that ships are safer than they were, and that the risks of disaster and loss of life have been very considerably reduced. In 1890 there were 3,800 British steamers engaged in foreign trade. Their white crest numbered over 100,000. The death toll was 320 from shipwreck, 127 from accidents, and 283 from disease. In 1918 the number of ships was over 4,000, and the hands employed numbered 100,000. The deaths were: 204 from shipwreck, eighty-four from accidents, and 319 from disease. In the first named year there were 48,000 passengers carried from British home ports to non-European countries, and the number of deaths from wrecks, etc., was 360; from accidents, twenty-two, and from disease, 446. In 1918 the number of passengers carried was 1,075,000, and there were only fifty deaths from wrecks, seven from accidents, and 1,113 from disease. It is said that with regard to deaths from disease the ratio of deaths from natural causes is about the same on sea as on land. Sir Westcott Abell, in summarizing his investigation and stating the chance of a casualty occurring to a passenger ship and involving loss of life is 1.2 per cent, says that assuming that one million passengers per annum are carried on ships, it would only be possible if ships were brought to absolute perfection in accordance with the latest developments of naval architecture to prevent the loss of passenger life to the extent of severity a year. Even in this case, he points out, the most perfect ship is under the control of the human element, and hence the many perils shore or incur other perils also due to the human factor. Since 1918 matters in shipbuilding have progressed very considerably, and a British ship is now safer than ever. The Board of Trade, however, of examinations for their object is much stiffer than it used to be, and there has also been a great advance in navigational devices having for their object the increased safety of the ship. Lighting and wireless signalling have also been much improved, as a result that travelling by sea today compares very favorably with locomotion on land. Reverting to the longed-for unsinkable ship, when the ill-fated White Star liner Titanic was built, the public was led to think that the unsinkable ship had at last arrived. These hopes were very rudely dispelled when, on April 10, 1912, the magnificent vessel, while on her maiden voyage, came in collision with a submerged iceberg, with the result that her side was ripped and she sank with the loss of 1,517 lives. This, of course, was an extraordinary disaster, but it serves to bring into more striking contrast the fact that the safety of life at sea has

## Drive in comfort at "10 below"

YOU never fully appreciated the advantages of a Ford Coupe or Sedan until winter weather drives other cars to cover.

When you see owners of other cars on foot or riding on street cars you congratulate yourself that you can drive as comfortably at 10 degrees below as at 90 degrees in the shade.

We have a deferred payment plan that makes it easy to buy a Ford Closed Car, and you can make the whole family happy by taking home a Ford Coupe or Sedan on Christmas Day.

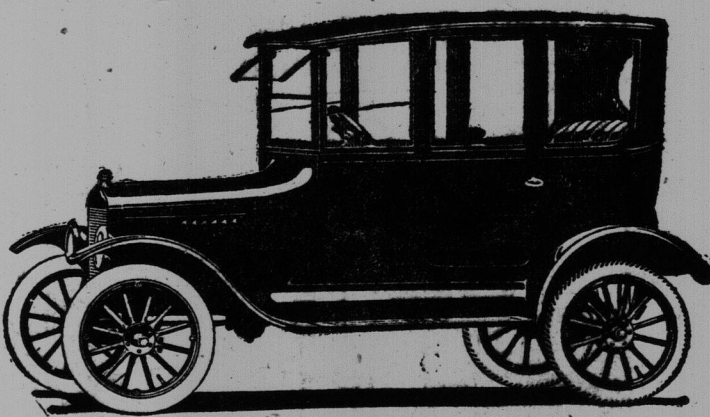
### Sedan

\$1,095.00  
Cash Payment  
\$279.44

### Coupe

\$995.00  
Cash Payment  
\$267.76

Fully equipped with Electric Lights, Start-er and Spare Tire. Price is F.O.B. and includes sales tax. St. John.



ROYDEN FOLEY, Ford Dealer

Phone 1338

300 UNION STREET

### HOUSE

For a CHRISTMAS GIFT

A permanent gift that means much for the future is a cozy self-contained or two family house. The following list is varied and in reach of the buyer of much or little means. Terms can also be arranged.

King Street East—Brick house with separate hot water furnace. Between Wentworth and Carmarthen. Price reasonable.

Princess street—City leasehold, low ground rent. Two family house. Bath and lights, house in splendid condition. Exceptional value.

Crown street—Two family house. Lights and bath. New. Freehold. Price low for quick sale.

Exmouth street—Two family house. Modern. Price \$2,500.

Victoria street—Two family house. Freehold. Lights and bath. Bargain price. Crown street—Two family house with corner lot. Requires considerable repair, but can be bought cheap.

Rock street—Freehold. Four family. A real bargain.

Chester street—Two family house. Freehold. Lights and bath in lower flat. Price low.

Chester street—Two family house, on "water front" with gear shed. Will be sold low.

Barker street—Two family house with barn at a price that makes it within reach of the small buyer.

For further particulars apply TAYLOR & SWENNEY, Real Estate Brokers, 551 Prince William Street, Opposite Post Office, Telephone Main 2596. 12-21

been materially enhanced during recent years.

Ontario Judge Dead. St. Thomas, Ont., Dec. 17.—Judge C. O. Brumhart died last night after several weeks illness, aged sixty years. He represented East Elgin in the legislature in 1887.

### Is Your CHRISTMAS COAL

IN YOUR BINS YET?

For a bright, cozy Christmas fire, order our

Genuine Original

BROAD COVE COAL

Which is noted for its generous, genial warmth. But please order early to prevent disappointment. Phone Main 5648.

LOWEST CASH PRICES

LEONARD COAL CO., 10-14 Britain St. 17351-12-19

### ONE OF THE LAST CHRISTMAS SHIPS

Halifax, Dec. 16.—Last of the "Ocean Greyhounds" to carry eager pilgrims back to the homeland for Christmas, the White Star-Dominion liner Canada, sailed from Halifax today, her commander, Captain John Davies, stating his determination to get his ship to Liverpool by the morning of Dec. 24, if at all possible.

British War Mother. Mrs. Amelia McCudden, who represented the war mothers of Great Britain at the grave of the unknown American soldier at Arlington, visited Halifax today when the White Star-Dominion liner Canada, on which she is a passenger for home, called here. The late husband of the British war mother was stationed here years ago when in the Royal Engineers and one of the many decorations she wears was won by him for life-saving in this city.

EMBARRASSED GROCER. Hit Hard When He Tested Blind Man's Sense of Touch. Samuel Compers said in a recent after-dinner speech: "Lenine told the world to watch what

"Sand".

COMMISSION TO JAMAICA. A mission, headed by Major Wood, has been sent to Jamaica by the British government for the purpose of investigating economic and political conditions in the West Indies. The party has arrived, and an inquiry will be begun at once, probably lasting two weeks and covering the other West Indian colonies.

The arrival of the British mission has created considerable interest in view of the frequent discussions about the possible sale of the West Indies to the United States.

## 50 Years of Foreign Exchange

SINCE 1872 we have specialized in the transaction of foreign exchange business through our New York Agency and the constantly increasing number of our branches.

Our facilities for the purchase and sale of exchange on all parts of the world are excellent.

Assets Over \$37,000,000.00

Canada Permanent Mortgage Corporation  
New Brunswick Branch, 63 Prince Wm. Street, St. John, N. B.  
R. F. WRIGHT, Manager. T. A. McAVITY, Inspector.

PAID-UP CAPITAL \$15,000,000  
RESERVE FUND \$15,000,000  
ST. JOHN BRANCH—W. H. Logsdin, Manager

## THE CANADIAN BANK OF COMMERCE

A Special Invitation

to open a Savings Account is extended to all who have not yet tried this means of accumulating money. Our experienced Staff will make it easy for you to open an account and will also advise and assist in increasing your savings. Interest at FOUR PER CENT PER ANNUM, paid and compounded twice each year. Many of your friends have accounts with us and will tell you of the complete facilities we offer depositors.

Assets Over \$37,000,000.00

Canada Permanent Mortgage Corporation  
New Brunswick Branch, 63 Prince Wm. Street, St. John, N. B.  
R. F. WRIGHT, Manager. T. A. McAVITY, Inspector.

## Build Now to Save Later

LUMBER PRICES HAVE STRUCK BOTTOM  
Everything is at rock bottom just now; except trim, which has advanced some, but higher prices are close at hand. We have a large stock of

PLANNED REFUSE LUMBER which is priced reasonably. Better order a supply and start in on your house frame while prices are at lowest ebb. For Quotations, Phone Main 3000

MURRAY & GREGORY, LIMITED

# MILLBANK

"Satisfiers to Countless buyers"

THE BEST 15¢ Cigarette