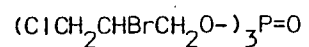
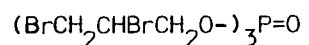


Tris(1-bromo-3-chloropropyl) phosphate

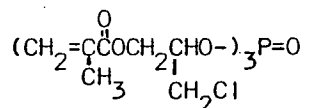


Tris(2-bromo-3-chloropropyl) phosphate

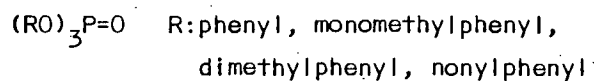


Tris(2,3-dibromopropyl) phosphate

rat p.o. 1010



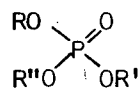
Tris(1-chloromethyl-2-methacryloyloxyethyl) phosphate



Triphenyl (or monomethylphenyl, dimethylphenyl, nonylphenyl) phosphate

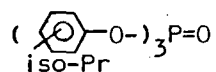
(Triphenyl phosphate
Tri-0-cresyl phosphate

rat i.p. 250
man p.o. 1000 apr.)

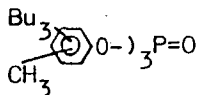


R, R', R'': phenyl, monomethylphenyl, dimethylphenyl, nonylphenyl

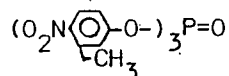
Tris(phenyl, monomethylphenyl, dimethylphenyl, nonylphenyl mixed) phosphate



Tris(isopropylphenyl) phosphate



Tris(methyltributylphenyl) phosphate



Tris(3-methyl-4-nitrophenyl) phosphate