

that suffereth long and is kind, that envieth not, vaunteth not itself, is not puffed up, doth not behave itself unseemly, seeketh not her own, is not easily provoked, thinketh no evil."

There are many sour and unamiable Christians, we know; but the exception helps to prove the rule, because they do not exemplify the principles of the religion they profess.

Roughness of manner, however, is not always a sign of want of kindness of spirit; and there are many men gentle at heart who, from having lived among coarse and boisterous people, have acquired modes and habits of speech which are far from representing their real nature.

That "a poet is born, not made," is a popular truism; but the manners and feelings of a gentleman are acquired. Perhaps, however, this exquisite courtesy should not always be expected from ordinary people.

"Take thou no care for aught save truth and right: Content, if such thy fate, to die obscure: Wealth palls and honours, Fame may not endure."

ECHOES FROM LONDON.

LONDON, February 7.

NEAR Charing-cross there stands a famous club, the servants' wages of which are £70 a week. The takings one day last week from morn till midnight were—well, exactly four shillings and one penny!

A NEW order! The Order of the Violet Ribbon is the latest idea. Its members undertake not to drink at any public bar, in any restaurant, or anywhere save in a private house.

SEA-GOING steamers of immense size, quite reminiscences of the Great Eastern, have latterly been seen navigating the Thames above bridge, their funnels and masts lower to enable them to pass under the bridges.

THE Duchess of Connaught remains at Windsor Castle, but is now convalescent, taking walking and carriage exercise in the Palace grounds. The infant son of the Duke and Duchess will be christened on the Queen's return from Osborne.

MR. GLADSTONE, dressed in his best, took part in the Carnival at Nice, and in five minutes was changed into a miller, being covered all over with flour, with which he was pelted.

AT the next meeting of the Royal Academy a proposal will be made, and, it is said, carried, to limit the number of pictures hung by academicians in the yearly exhibition to four.

AN enterprising firm are making ornamental crosses out of the late Dr. Pusey's book-shelves for sale amongst the great Tractarian admirers. Book-shelves were never probably put to such a use before.

SIR HENRY THOMPSON, a vegetarian and a water-drinker, has discovered an old treatise which contains curious recipes showing how the charm of variety may be cast over the frugal board of the vegetarian.

THE publishers of a German novel scored a hit recently in the line of advertising. They had inserted in most of the papers a notice stating that a certain nobleman of means, anxious to obtain a wife, wanted one who resembled the description of the heroine in the novel named.

MANY anecdotes of the Prince of Wales are current at Cannes. On the day of his arrival he hastened from the train to church, but getting there late slipped in among the footmen and ladies' maids, one of whom offered him her Prayer-book.

SIR FRANCIS LEIGHTON is at work upon a statuette—to be presently enlarged and cast in bronze—of a man awaking from sleep; on the picture, life-size, of a girl in gold and purple, seated on a tiger skin; on the portrait of a little maiden in white and gold, with peacock feathers in her hand and a blue flower at her breast;

OUR CHESS COLUMN.

All communications intended for this Column should be addressed to the Chess Editor, CANADIAN ILLUSTRATED NEWS, Montreal.

The late great chess match in England between the two Counties, Yorkshire and Lancashire, with seventy-nine players on each side, was a splendid affair, and shows to what an extent the game is appreciated in some places on the other side of the Atlantic.

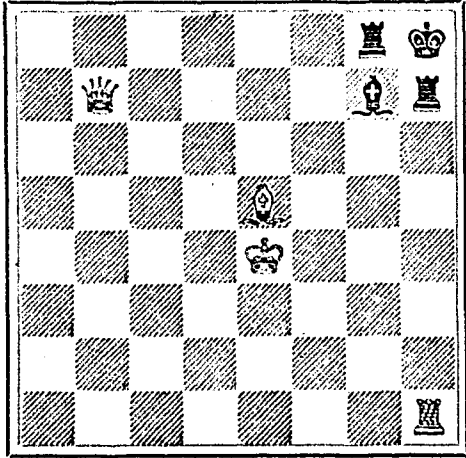
Mr. Herbert Gladstone, it appears, was present, and in his speech alluded to the interest he felt in the contest between the rival counties, at the same time remarking that he was a member of the Oxford Chess Club when Prince Leopold was President.

We are glad to learn from the Croxson Guardian that it has been decided to resume the publication of the Chess-player's Chronicle, the first number being announced to appear on the 3rd inst.

The St. Louis Chess, Checker and Whist Club, desiring to revive chess in St. Louis and give their best player an opportunity to cope with the great chess master before his return to England, have invited Mr. Steinitz to visit St. Louis and to play a series of games with Mr. Max Judd for \$200 a side.

The Toronto Chess Club has invited the Buffalo Club, seven of them, to meet them in Toronto, on the 21st instant, for a set-over the boards, which has been accepted.

PROBLEM No. 422. By Gustav Morsch. BLACK.



WHITE. White to play and mate in two moves.

SOLUTION OF PROBLEM No. 420.

White. 1 Q to Q R 3, 2 Q to K 7 ch, 3 Q mates. Black. 1 K moves, 2 K to K B 5.

GAME 548TH.

The fifth game in the match played recently in New York between Captain Mackenzie and Mr. Steinitz.

(Roy Lopez.) WHITE. (Mr. Mackenzie.) 1 P to K 4, 2 K Kt to B 3, 3 B to R 4, 4 B to R 4, 5 P to Q 4, 6 Kt takes P, 7 Q takes Kt, 8 B to Q Kt 3, 9 P to Q B 3, 10 B to K 3, 11 Q to Q sq, 12 B takes B, 13 Kt to Q 2, 14 Q to Kt 4, 15 Castles, 16 P to K B 4, 17 Q Kt to B sq, 18 R to K B 3, 19 R to K Kt 3, 20 Kt to B 3, 21 B to B sq, 22 P to Q Kt 3, 23 P to K 5, 24 P to K R 4, 25 B to K 3, 26 R to Q B sq, 27 R takes P, 28 R to Q B sq, 29 B to Q 2, 30 Q to R 5 sq, 31 B takes P, 32 B to Q 2, 33 K to R 2, 34 R to B 3, 35 Kt to Kt 5, 36 Q takes B, 37 P to Q Kt 4, 38 B to K 3, 39 B to B 5, 40 Q to Kt 4, 41 K R to B 3, 42 R to Q R 3, 43 Q to K Kt 3, 44 K to R 5 sq, 45 Q to B 2, 46 R takes R, 47 R to K B 3, 48 B to Q 4, 49 P to Kt 5, 50 P to Kt 6, 51 B to Kt 2, 52 R to B 7, 53 B to B sq, 54 P to Kt 7, 55 B to Kt 5, 56 R takes P ch, 57 R to R 7 ch, 58 Q to B 7 ch, 59 B to B mate. Black. (Mr. Steinitz.) 1 P to K 4, 2 Q Kt to B 3, 3 P to Q B 3, 4 K Kt to K 2, 5 P takes P, 6 Kt takes Kt, 7 P to Q Kt 4, 8 P to Q 3, 9 B to K 3, 10 Kt to Q B 3, 11 Kt to R 4, 12 P takes B, 13 B to K 2, 14 K to B 2, 15 R to K B sq, 16 P to Q B 4, 17 Q to K B sq, 18 Kt to K Kt sq, 19 R to B 2, 20 Kt to B 5, 21 Q R to R 2, 22 Kt to Kt 3, 23 P to K 4, 24 P to Q R 4, 25 P to Q Kt 5, 26 P takes P, 27 R to Q B 2, 28 R to Q B 3, 29 P to Q B 4, 30 P takes P, 31 Kt to Q 2, 32 Q to R 3, 33 Kt to B sq, 34 R to Q Kt 3, 35 B takes Kt, 36 R to Q B 3, 37 P to B 5, 38 Q to Kt 2, 39 R to B 4, 40 Kt to Kt 3, 41 Q to K B 2, 42 P to K R 4, 43 R takes B P, 44 K to R 2, 45 Q to B 4, 46 Q takes R, 47 Q takes K P, 48 Q to K 5, 49 P to Kt 5 sq, 50 P to K 4, 51 P to Q 5, 52 P to B 6, 53 P to Q 6, 54 R to Q sq, 55 K to R 2, 56 K to R sq, 57 K takes R, 58 K to R sq.

FITS A Leading London Physician establishes an Office in New York for the Cure of EPILEPTIC FITS. From Am. Journal of Medicine. Dr. Ab. Meserole (late of London), who makes a specialty of Epilepsy, has without doubt treated and cured more cases than any other living physician.

APPRENTICE.

WANTED a respectable young man to learn the Art of Pictorial Engraving. Apply to G. B. BURLAND, Manager British American Bank Note Co., St. John Street, Montreal.

IGLI Floral Autograph Album, 1 Photo Card Album, 1 Memoranda Book, 1sc. West & Co., Westville, Ct.

British American BANK NOTE COMPANY, MONTREAL. Incorporated by Letters Patent. Capital \$100,000. General Engravers & Printers.

Bank Notes, Bonds, Postage, Bill & Law Stamps, Revenue Stamps, Bills of Exchange, DRAFTS, DEPOSIT RECEIPTS, Promissory Notes, &c., &c., Executed in the Best Style of Steel Plate Engraving. Portraits a Specialty. G. B. BURLAND, President & Manager.

THE Canada Co-Operative Supply ASSOCIATION (LIMITED.) 8 and 10 St. James Street West, MONTREAL. Authorized Capital - - - \$150,000. Shares - - - \$5 each.

This Society has for its object the supply and distribution to its members, of the best and purest articles of a staple character that are of daily use and requirement, at the very lowest remunerative prices.

The Grocery and Provision Departments. (Ground Floor.) will be found to contain, besides the usual staple groceries, Fresh Fruits (glacé and crystallized), Finest Malaga Raisins, Currants, Nuts, Jams, Marmalades, Chocolates, English and Canadian Bacon and Cheese, American Hams, French Concentrated Soaps, especially suitable for camping out, exploring parties and invalids, Spratt's Patent Dog Cakes, &c.

The Wine Department. (Ground Floor.) Has two hundred varieties of undoubtedly GENUINE WINES AND LIQUORS from the first European Houses. Cigars, Tobaccos, Cigarettes, Pipes, Matches, Cigar Cases, And other smokers' requisites.

The Dry Goods Department. (First and Second Floors.) Is kept well supplied with the best STAPLE and FANCY GOODS, and the latest fashionable articles and materials. A few choice FURS and DRESS COSTUMES will be found marked in this department at very low figures.

Gentlemen's Furnishings. (First Floor.) Has a large stock, including Solid Leather Portmanteaus, Travelling Baskets, Dress and Uniform Cases, Hat Boxes and Continental Trunks, and other travellers' necessities of the very best quality. The Directors can import for shareholders and members.

Stationery, Jewellery, Plated Ware and Fancy Goods Department. (First Floor.)

Herein will be found a large and attractive assortment of European Novelties, suitable for presents and house adornment; also a large variety of FANCY AND STAPLE STATIONERY, CHOICE PHOTOGRAPHS, HAND PAINTED PANELS, BRASS AND BRONZE WORK, CLOCKS of all sizes and prices, and LADIES' AND GENTLEMEN'S FITTED DRESSING AND TRAVELLING BAGS.

Drug Department. (Second Floor.) Contains a very complete stock of Drugs, Perfumes, Scent Bottles, Perfume Cases, Brushes, and all toilet necessities from LONDON and PARIS.

Crockery Department. (Second Floor.) Has received an extensive stock of Glass, Fancy Earthenware, Ornamental and Useful China, Tea Sets, Dinner Sets, &c. Also a handsome collection of Duplex Lamps with Colored and Fancy Globes, Shades and Bases.

Furnishing Department. (Fourth Floor.) This department is now being extended by the arrival of the latest patterns of Brass and Iron Bedsteads, Invalid Chairs and Bed Rests, Woven Wire Mattresses, Ornamental Coal Vases, Brass and Iron Fenders, Fire Irons, &c. New Goods are arriving daily, and no efforts are being spared by the MANAGEMENT to carry out to the fullest extent the objects of the Association and to increase its utility to the Shareholders and Members. Country orders are shipped immediately after they are received, and arrangements have been made to give Shareholders the benefits of pre-paid freight on their orders, subject to the conditions published in the price list, which can be procured, together with Application Forms of Shares and Order Forms for Goods, by addressing the Secretary.