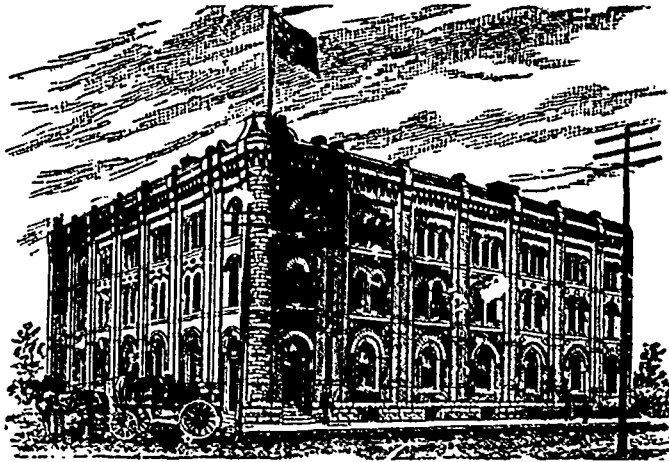


GOODS SOLD TO THE
TRADE ONLY.GOODS SOLD TO THE
TRADE ONLY.

G. F. & J. GALT,

DIRECT IMPORTERS

TEAS, SUGARS, WINES, LIQUORS and GENERAL GROCERIES
CORNER PRINCESS AND BANNATYNE STREETS, WINNIPEG, MANITOBA.

JOHN PARSONS.

W. J. PARSONS.

R. A. ROGERS.

THE PARSONS PRODUCE CO.,

R. A. ROGERS, Manager.

—WHOLESALE PACKERS AND JOBBERS OF—

Fancy Dairy and Creamery Butter, Eggs, Apples,
AND DRESSED POULTRY.

GENERAL COMMISSION MERCHANTS.

175 Main Street, Cauchon Block,
Telephone 620.

Winnipeg, Man.

REFERENCES: Imperial Bank of Canada, Winnipeg, Man. and Parkhill Banking Co., Parkhill, Ont.

Toronto Hardware Prices.

A very decided and general feeling of annoyance has been roused among the trade by a distinction which the customs authorities have drawn between tin plate and terne plate. Heretofore terne plate has come in free of duty, classing as a species of tin plate. Now a rule has been set up which makes terne plate subject to a duty of 12½ per cent. The facts that the difference in the two classes of plates was never before made a basis for a difference of tariff classification here, and that they are admitted on the same terms in the United States dispose the trade to look upon the new ruling as unfair.

Antimony—Cookson's, per pound, 15 to 15½; other makes, 14 to 14½c.

Tin—Lamb and flag, 56 and 28-lb. ingots per pound, 23 to 24c; Straight's, 100-lb. ingots, 23 to 23½c; strip, 24½ to 25½c.

Copper—Ingot, 14½ to 15c; sheet, 18 to 20c.

Lead—Bar, 4½ to 5c; pig, 3¾ to 4c; sheet, per roll, \$4.75 to \$5.25; shot, Can. dis. 7½ per cent.

Zinc—Sheet, 6½ to 6¾c; zinc spelter, 5½c; domestic imported 6c; solder, hf and hf, 19½ to 21.

Brass—Sheet, 21 to 22c.

Iron—Bar, ordinary \$2.00; bar refined, \$2.50; Swedes, 1 in. or over, \$4.00 to 4.50; Lowmoor, 5½ to 6c; hoops, coopers', \$2.65 to

\$2.80; do, band, \$2.60 to \$2.75; tank plates, \$2 to \$2.25; boiler rivets, best, \$4.50 to \$5; sheet, 11 to 20 gauge, \$2.75 to \$3; 22 to 24 do, \$2.75 to \$3; 26 do, \$3 to \$3.25; 28 do, \$3.50 to \$3.75; Russia, sheet, per pound, 10 to 12c.

Galvanized iron—16 to 24 gauge, 5c to 5½c; 26 do, 5 to 5½c; 28 do, 5½ to 6c.

Iron wire—Market bright and annealed Nos. 1 to 16, net list from stock; 12½ per cent. discount from factory; market, tinned per pound, 4½c to 8c; galvanized fence, same discount as bright and annealed; barbed wire, 4½c to 5c; coil chain ½ in., 4½ to 4¾c; 7-16 in., 5½ to 5¾c; iron pipe, off list, 60 to 62½ p.c. discount; do, galv., off list, 33½c to 35 p.c.; boiler tubes 2 in., 12c; do, 3 in., 13½c.

Steel—Cast, 13 to 14c; boiler plate, ¼ in. \$2.75; 5-26 do, \$2.60; ¾ do, \$2.50; sleigh shoes, \$2.50 to \$2.75.

Nails—3 in. and upwards, \$2.20 net cash; brads, mouldings, wire, 70c and 5 p.c. to 70c and 10 p.c. dis.

Horse nails—Can. dis. 60 to 60 and 5 p.c.

Horse shoes—Per keg, \$3.60.

Canada plates—Blain, \$3.20 to \$3.25.

Tin plates—1C coke, \$4.50 to \$4.75; IC charcoal, \$4.75 to \$5.00; IX charcoal, \$5.75 to \$6.00; IXX charcoal, \$6.75 to \$7.00; DC charcoal, \$4.50.

Gunpowder—Can blasting, per keg, \$3.25 to

C. H. Mahon & Co.

BOOTS AND SHOES,

WINNIPEG, - MANITOBA.

Mitts, Moccasins, Felts and Rubbers.

—A FULL ASSORTMENT OF—

TENNIS AND LACROSSE SHOES,

—AND—

OXFORD TIES.

HUTCHISON, DIGNUM & NISBET,

Manufacturers' Agents and Merchants,

LINENS, IMPORTED WOOLLENS AND TAILORS' TRIMMINGS. SELECT CANADIAN TWEEDS

55 Front St. West, - TORONTO.

—SOLE AGENTS IN CANADA FOR—

J. N. Richardson, Sons & Ouden, Belfast, - Linen Goods
Currie, Lee & Gawn, Hawick, - Scotch Tweeds
R. Pringle & Son, Hawick, - Scotch Underwear
David Mosley & Son, Manchester, - Rubber Goods
J. S. Manton & Co., Birmingham, - Buttons

Stock of Linens, Tweeds and Trimmings
always on hand.

R. B. HUTCHISON.
Late Mills & Hutchison)

Ed. J. DIGNUM.

R. A. NISBET

\$3.50; can sporting, FF, \$5; can sporting, FFF, \$5.25; can rifle, \$5.25.

Rope—Manilla, 12½ basis; sisal, 9c basis. New Zealand, 8½c per lb.

Axes—Per box, \$7 to \$12.

Twine—Binder, blue ribbon, 14c; red cap, 12c; crown, 11c; composite, 9c.

Glass—Fourth quality star, 1st break, \$1.40 to \$1.50; 2nd do, \$1.50 to \$1.60; 3rd do, \$3.40 to \$3.50; 4th do, \$3.70 to \$3.80; 5th do, \$4 to \$4.10.

The Toronto Mill Stock and Metal Company quote dealers paying prices as follows: No. 1 heavy scrap, 65 to 67½c per 100 lbs.; stove cast scrap, 45 to 50c; No. 1 wrought iron scrap, 62½ to 70c; No. 2 including sheet iron, hoop iron and mixed steel, 20 to 25c; new scrap copper, 9½c to 10c; heavy scrap copper, 10¾c; old copper bottoms, 8½c to 9c; light scrap brass, 5½c; heavy yellow scrap brass, 7½c; heavy red scrap brass, 8½ to 9c; scrap lead, 2½ to 2¾c; scrap zinc, 2½ to 3c; scrap rubber, 2½ to 2¾c; country mixed rags, \$1 per 100 lbs.; clean dry bones, 60c per 100 lbs.—*Empire*, April 15.

A harvest excursion party from Ontario, arrived by the C. P. R. at Winnipeg on Friday. There were about 250 persons in the party, principally farmers from the districts north and west of Toronto. They are ticketed to various points in this province and the territories.

A bulletin dealing with syrups, sugars and molasses has been issued by the Inland revenue department at Ottawa. It contains an analysis of 100 samples by Babington, assistant to the chief analyst. White granulated sugars were found to be practically pure, and yellow sugars were also found to be genuine. The only adulteration detected was in syrups, three of them being found to be mixed with starch and glucose.