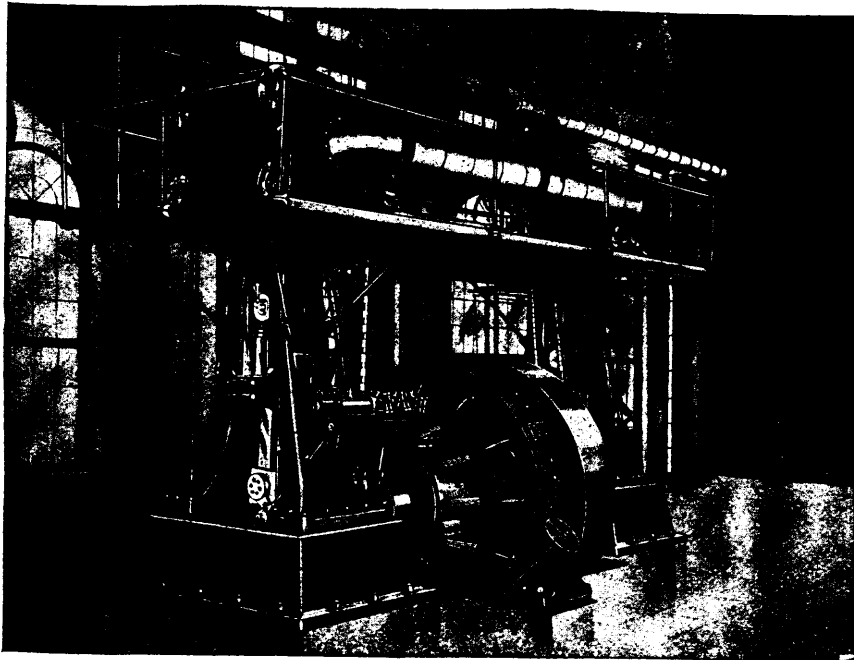


# ROBB-ARMSTRONG

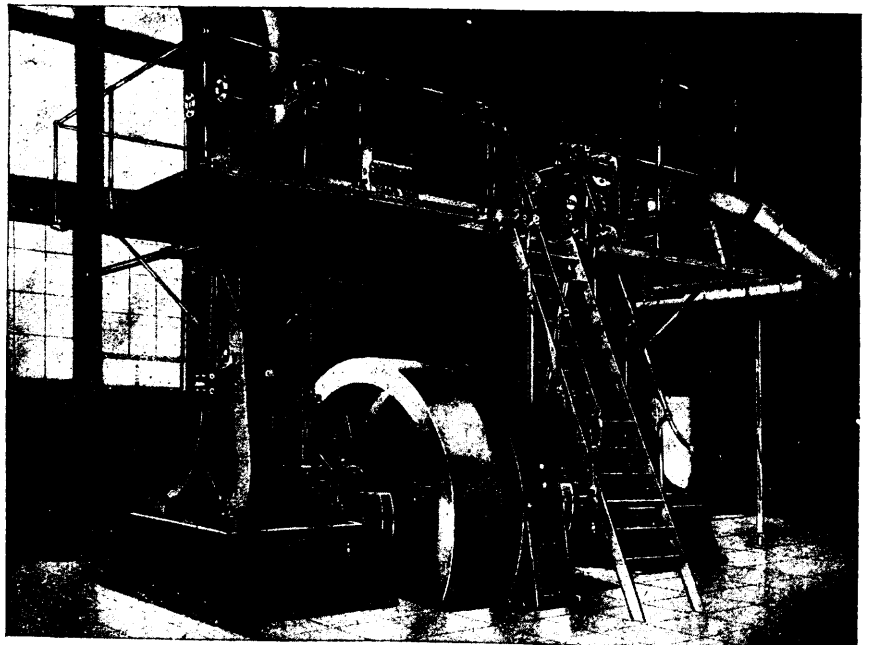
## CORLISS ENGINES



At Toronto Electric Co., Toronto, Ont.

**Vertical  
and  
Horizontal**

**Simple,  
Tandem and  
Cross-Compound**



At Nova Scotia Steel and Coal Co., Sydney Mines, C.B.

# ROBB ENGINEERING CO. LTD., AMHERST, N.S.

**AGENTS**

**WILLIAM McKAY, 320 Ossington Avenue, Toronto.**

**WATSON JACK & COMPANY, Bell Telephone Building, Montreal.**

**J. F. PORTER, 355 Carlton Street, Winnipeg.**