

same space of time on the surface of a milk-pail ten inches in diameter : and, allowing five minutes as the time occupied in a milking, there will have fallen 34,450 germs into that one milking. As soon as a germ falls into the gelatine plate it begins to develop itself and forms a colony visible to the naked eye, in a day or thereabouts, as may be seen in figure 1, on which eleven distinct species of germs are visible.

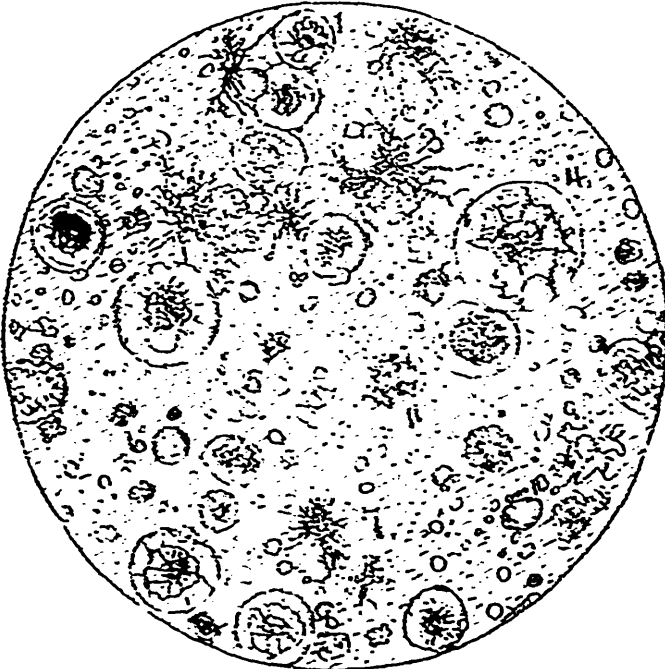


Fig. 1.

The experiment was repeated during the summer, as follows. First, a gelatine plate, sterilised as above, was exposed for half a minute, under the udder of a cow milked in the open air, the udder being left uncleaned. The result was that 70 colonies, composed of eleven different species of germs were developed on the plate. Subsequently, the same cow was subjected to the same test, after her sides and udder had been washed : the result was that only three colonies of two species of germs, were found on the plate.

Now, to convince those who think that to insist upon the