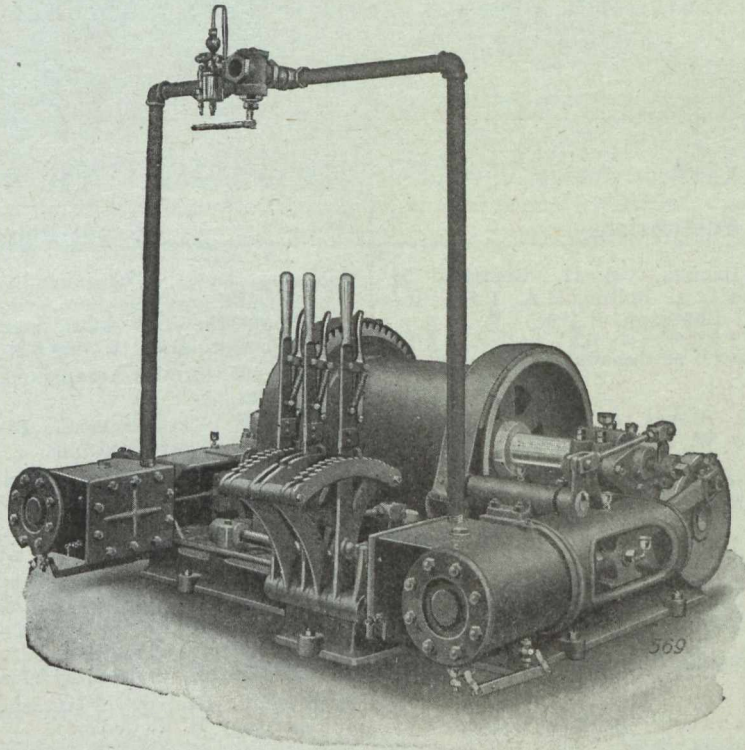


If You Are Looking For A Mine Hoist That Will Give
You Real Service And Lasting Satisfaction You
Cannot Do Better Than Choose A "CIRCO"



Here Are 10 Reasons Why:

1. Simple and Reliable Friction Clutch.
2. Powerful Band Brake.
3. Operating Levers grouped in a bank at the rear of the machine within convenient reach of the Throttle.
4. Crosshead Guides are bored at the ends of Frames faced at the same setting insuring accuracy and permanency of alignment.
5. Crosshead Shoes are adjustable for wear centrally and have a bearing area more than twice the area of the pistons.
6. Connecting Rods and Eccentrics are of the Locomotive Type.
7. Cylinders are Reversible and can be detached from the Frames and used on either right or left side.
8. Exhaust may be connected to the top or bottom of cylinders or both openings used when hoist is run on air.
9. Interchangeable construction prevents tie-ups and shut-downs for spare parts.
10. All parts designed with sufficient margin of safety to protect your property and your men.

Prompt delivery can be made of "CIRCO" Mine Hoists in sizes of from 6 x 8" to 10 x 12" with lifting capacities of from 4,000 to 10,000 pounds, and larger sizes can be supplied to order. Our nearest branch will gladly submit detailed information on request.

CANADIAN INGERSOLL-RAND COMPANY, Limited

SYDNEY

SHERBROOKE
WINNIPEG

MONTREAL
NELSON

TORONTO
VANCOUVER

COBALT