

## Your chance to prove—*come and see*

Grocers and Butchers should make it a point to visit the "Hobart" exhibit while at the Toronto Exhibition. The demonstration of these wonderful, quick-grinding Electric Coffee and Meat Grinding Mills will be given in Manufacturers' Building No. 2, where we will be glad to see you any time. If you are a stranger in the city you are welcome to make use of our city offices at 105 Church Street (cor. Richmond Street)—make it your rendezvous.

Thousands of users throughout Canada have found the "Hobart" Mills are real money-makers. For quick, even grinding and power economy they are unequalled. You can pay for a "Hobart" Mill in a very short time with the extra profits made possible by its use. This veritable **Power Plant** is at your service every minute of the day.

The "Hobart" Mills are made in all sizes and styles, from the "Hobart Baby" shown below to the largest pedestal style, varying in capacity from one to twenty pounds a minute.

Hobart built the first Electric Coffee Mill and first Electric Meat Chopper, nearly

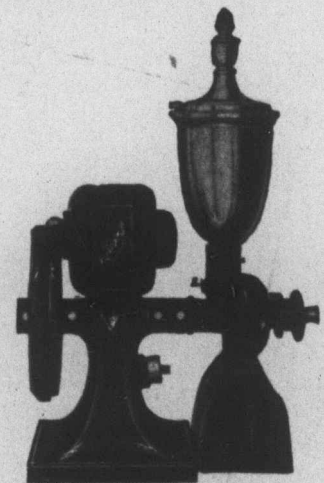
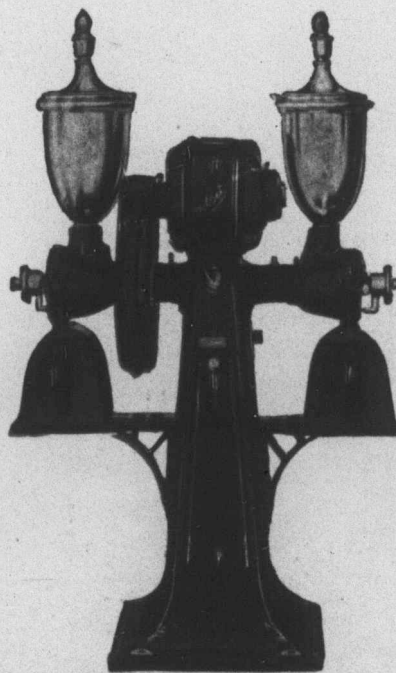
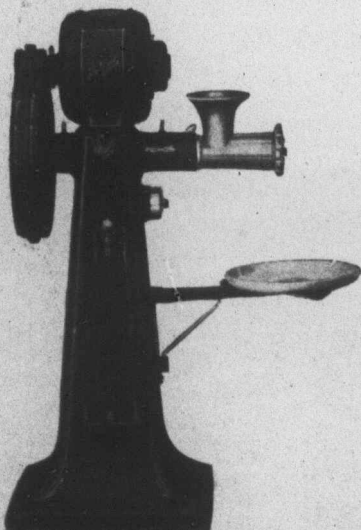
17 years ago. This long experience, combined with most improved factory equipment, enables Hobart to build the most improved, durable and efficient mills in the world.

**Come and let us talk it over, or send for Catalog.**

## The Hobart Manufacturing Company 105 Church Street TORONTO

There's a "Hobart"  
Electric Mill for  
every need

Agencies throughout  
the British Empire



This is the "Hobart Baby," a small mill that is as perfect in every detail as the largest of the Hobart line. It is giving absolute satisfaction to thousands of grocers with small needs.