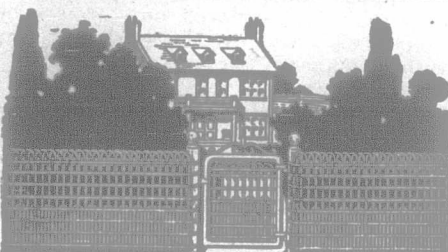




QUALITY
AND
EFFICIENCY
ARE
MAIN ESSENTIALS IN A
PIANO
YOU GET THESE IN A

BELL PIANO

We take the time and pains to build them right.
There are many good features in the BELL never found in other makes.
Information in our (free) catalogue No. 40. Send for it.
The BELL PIANO & ORGAN CO., Limited
GUELPH, ONTARIO



Protect Your Property With Peerless Lawn Fencing

Ornamental fencing serves a double purpose. It not only enhances the beauty of your premises, but also protects it and your children, as well. It keeps out marauding animals and trespassers. It protects your lawns and flowers and always gives your property that orderly, pleasing appearance.

Peerless Ornamental Fencing

is the result of years of fence building. It is built to last—to retain its beauty and grace for years to come and should not be confused with the cheap, shoddy fencing offered by catalog houses. Peerless fence is built of strong, stiff wire which will not sag and the heavy galvanizing plus the heavy zinc enamel is the best possible assurance against rust.

Send for Literature

Shows many beautiful designs of fencing suitable for lawns, parks, cemeteries, etc.
Agencies almost everywhere. Agents wanted in unassigned territory.

The Banwell-Hoxie Wire Fence Co., Ltd.
Winnipeg, Man. Hamilton, Ont.

SCHOOL OF MINING A COLLEGE OF APPLIED SCIENCE

Mining
Chemical
Civil
Mechanical
Electrical

ENGINEERING

Applied Chemistry
Mineralogy and Geology

KINGSTON ONTARIO
AFFILIATED TO QUEEN'S UNIVERSITY

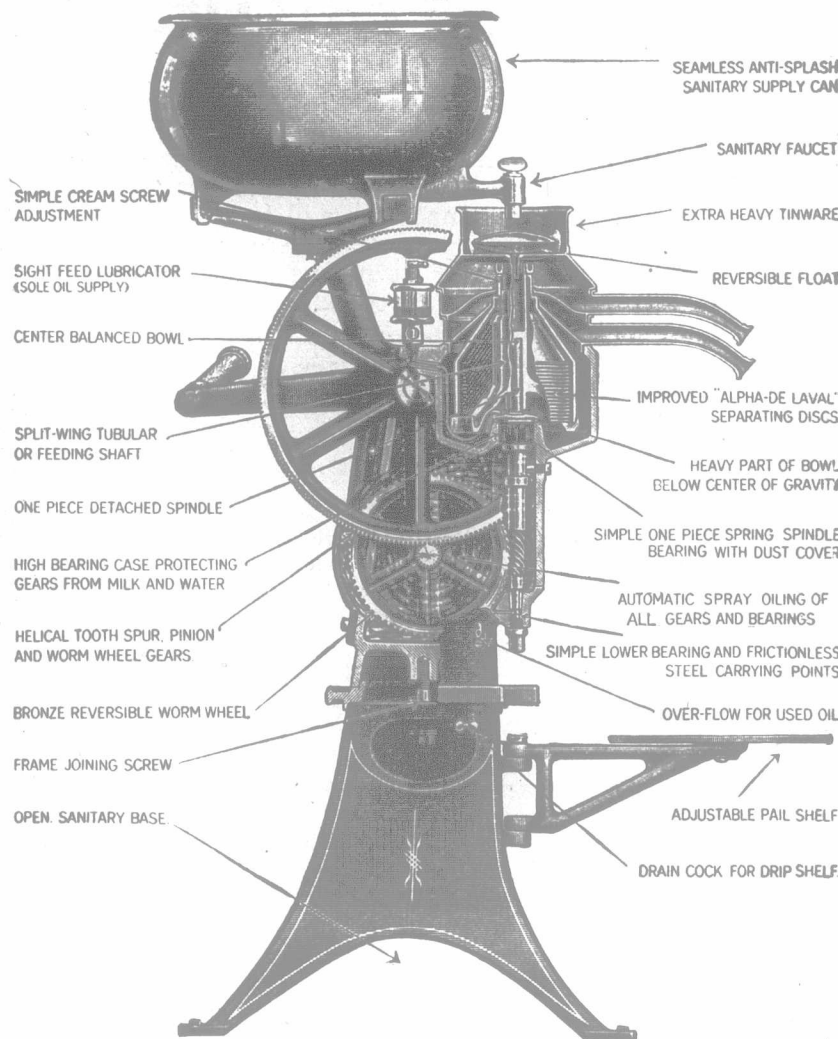
MITCHELL
SLIDE-EASY
NECKWEAR PATENT
FOR MEN
QUALITY STYLE VARIETY

DE LAVAL

The Best Constructed Cream Separator

EVERY year the superiority of the De Laval over all other cream separators becomes greater. Every year the De Laval offers separator buyers a better machine than the year before.

Note the improved features of the latest De Laval machines as shown in the illustration below, representing the very latest and best in cream separator design and construction.



The new De Laval catalog just out explains in detail the advantages of De Laval design and construction and why the De Laval is superior to all other cream separators. It will be mailed free upon request to nearest office.

De Laval Dairy Supply Co. Ltd.,
MONTREAL PETERBORO WINNIPEG VANCOUVER

2 IN 1

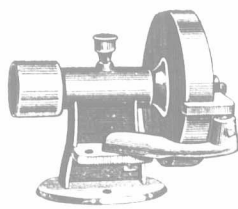
SHOE POLISH

10 CTS

Gives a Quick, Brilliant Polish That Lasts

Easier to Use Better for the Shoes

No Turpentine



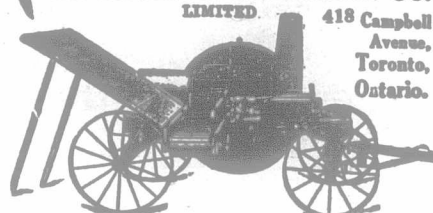
Here is a Money Saver—A two in one, an Emery Machine. Just the thing a farmer needs who has power. Why do you grind the old way when a machine like this will do it in one-tenth the time? You can grind your Cultivator Points, Disc Harrow Plates and Points, Plough Points and Mower Knives so that they are just as good as new, and as good as any Machinist could do it for you. The Machine will pay for itself in a very short time. It has ball bearings 1 1/4 x 5 inches long, grease lubricator. Any size stone, 2 inches wide to any diameter can be used. This machine is furnished with an 8 x 1 1/4 inch stone. Weight complete about 28-lbs. Price only \$8.00. Sold direct to farmers or agents. Agents wanted. Write for testimonials to—
J. G. CRESS, Machinist, Waterloo, Ont.

BEST RESULTS ARE OBTAINED FROM ADS. IN "ADVOCATE."

TRADE MARK Wilkinson REGISTERED PNEUMATIC ENSILAGE and STRAW CUTTERS

Our Climax "A" mounted is the only successful combination machine of this capacity on the market. It will cut and deliver green corn into the highest silo, or dry straw or hay into the mow. 18" mouth, rolls raise 8 inches and set close to knives, making solid compact cutting surface. Requires less power than any other of same capacity. No lost power. Direct pneumatic delivery, no worm gears or special blower attachment. Knife wheel also carries the fans. No lodging on wheel arms, everything cut, wheel always in balance. Steel fan-case. Supplied with pipe enough to reach any silo, also pipe rock, tools, etc. Ask your dealer about them and write for catalog. We also make a "B" machine unmounted.

THE BATEMAN-WILKINSON CO.



Has Your Home an Indoors Closet?

SELF-RE-SPECT, your health, the health of your family, and the march of progress all call on you to replace the draughty, dangerous, and unsightly outhouse with an indoors closet. You can do it inexpensively and readily with a

"Tweed" SANITARY CLOSET

Can be placed in cellar or elsewhere in any home. Requires no plumbing or sewage; only connection with stove-pipe to chimney-hole for ventilation.

You can try a Tweed Indoors closet for 30 days free. Ideal for summer cottages and schools, rural and village homes. Send for illustrated booklet.

STEEL TROUGH & MACHINE CO., Ltd.
5 James St. Ont.
Tweed, Ont.

EVERY FARMER NEEDS THIS Harness Repairing Outfit



We have the best Automatic Shoe and Harness Repairing Outfit on the market. The outfit consists of the Automatic Awl, Collar Awl, Needles, Linen Thread, Wax, Stitching Horse, also an extra bobbin, and full directions are given.

Complete outfit, \$1.50, sent prepaid. Agents wanted—liberal commission. Send for this outfit to-day. Write to

THE BERLIN SPECIALTY COMPANY
Berlin, Ontario

The Excelsior Life

Insurance Co.

Incorporated 1889

Assets nearly
\$3,500,000.00

Excelsior's liberal up-to-date policy contracts. The best for protection, for investment or to provide a fund to liquidate mortgages, etc.

Absolute Security, Liberal Profits
Company being foremost in all desirable features.

Desirable vacancies for agents to devote either entire or spare time to work. Apply to any branch office, or to:

HEAD OFFICE, TORONTO

The Future

Is an unopened book to all of us. While at present we may be going through life comfortably, what guarantee have we that our old age will be as comfortable? If sufficient Endowment Insurance is taken out with

THE
FEDERAL LIFE
ASSURANCE CO. OF CANADA

We shall have the necessary guarantee.
Head Office: Hamilton, Ont.