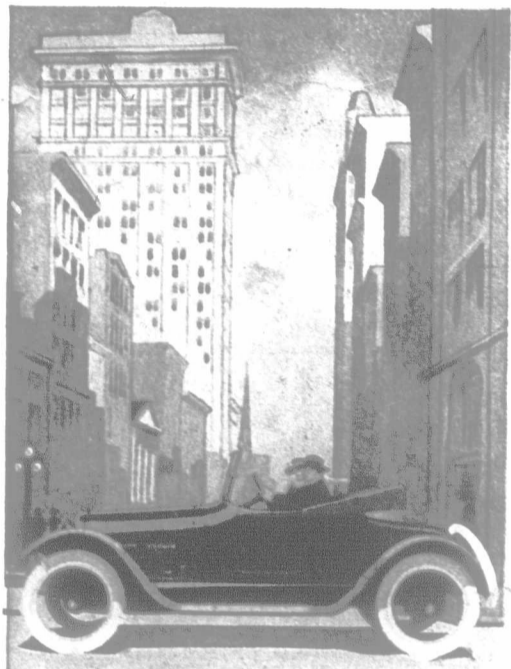


CANADA'S STANDARD CAR



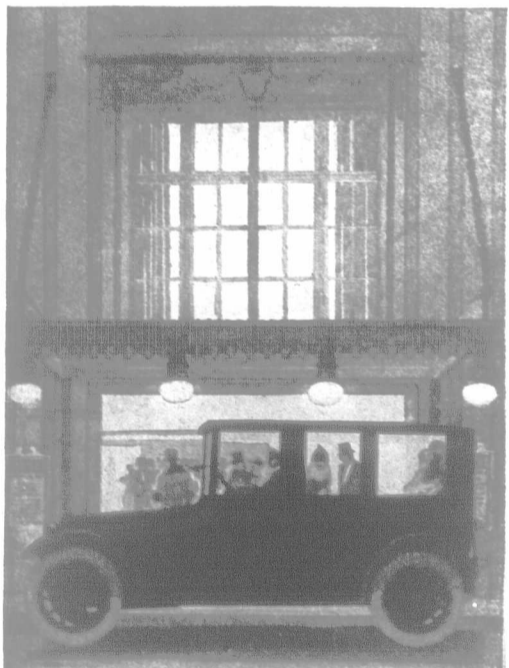
McLaughlin 3-Passenger Roadster E-6-44



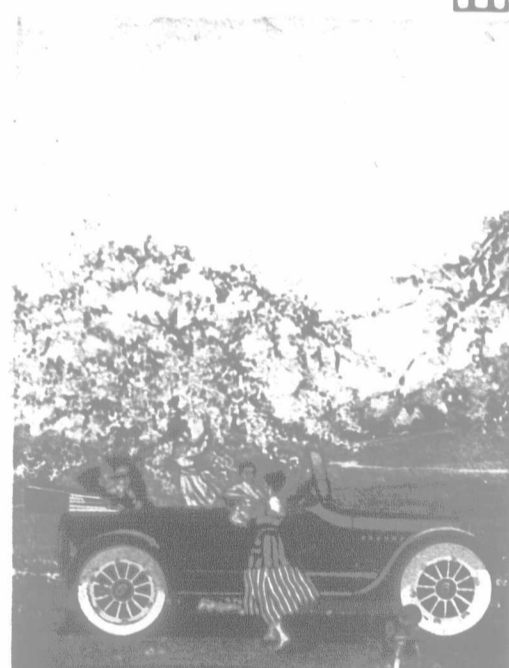
McLaughlin Touring Coupe E-6-46



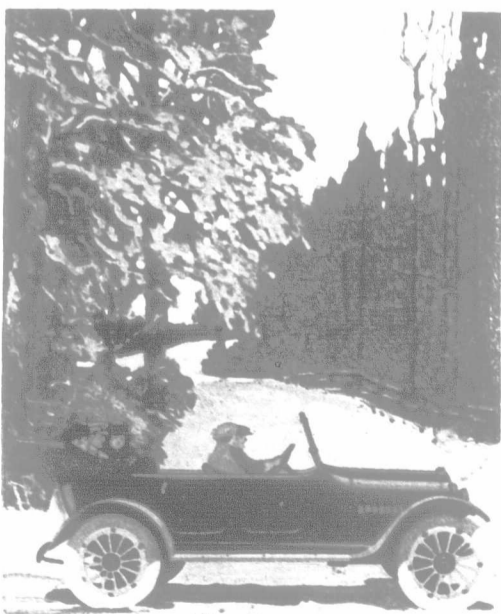
McLaughlin E-6-45 Special



McLaughlin 7-Passenger Touring Closed Car E-6-50



McLaughlin 7-Passenger Touring Car E-6-49



McLaughlin "Light Six" E-6-63



McLaughlin 5-Passenger Touring Car E-4-35

THE nation-wide reputation for the matchless efficiency of McLaughlin motor cars is the result of honest and persistent efforts in perfecting right principles of mechanical construction.

The McLaughlin valve-in-head motors have again been improved and furnish more power from gasoline than any other type of motor.

The art of coach building has been our pride for forty years, and our 1918 models in body design and beauty express our ideals, and anticipate the coming styles.

The quality of McLaughlin cars backed by the excellence of McLaughlin service makes the McLaughlin the best buy for Canadians.

Send for the new 1918 catalogue of Series "E" giving description and prices
The McLAUGHLIN MOTOR CAR CO., Limited, Oshawa, Ont.
12 Branches in leading cities. Dealers everywhere.

To
wh
ren

THI
y
t

how to
effective
cupolas
you can
the cost
barn yo
illustrat

Th

It is
contains
were ob
page cu
best me
sizes for
silos; ca
views o
BT
Pens, M
This
not a me
keep for
A co
building
or labor-

The
photogra
Yet
he is bui
number o
and you
in any w
The
copies.

K329 H