

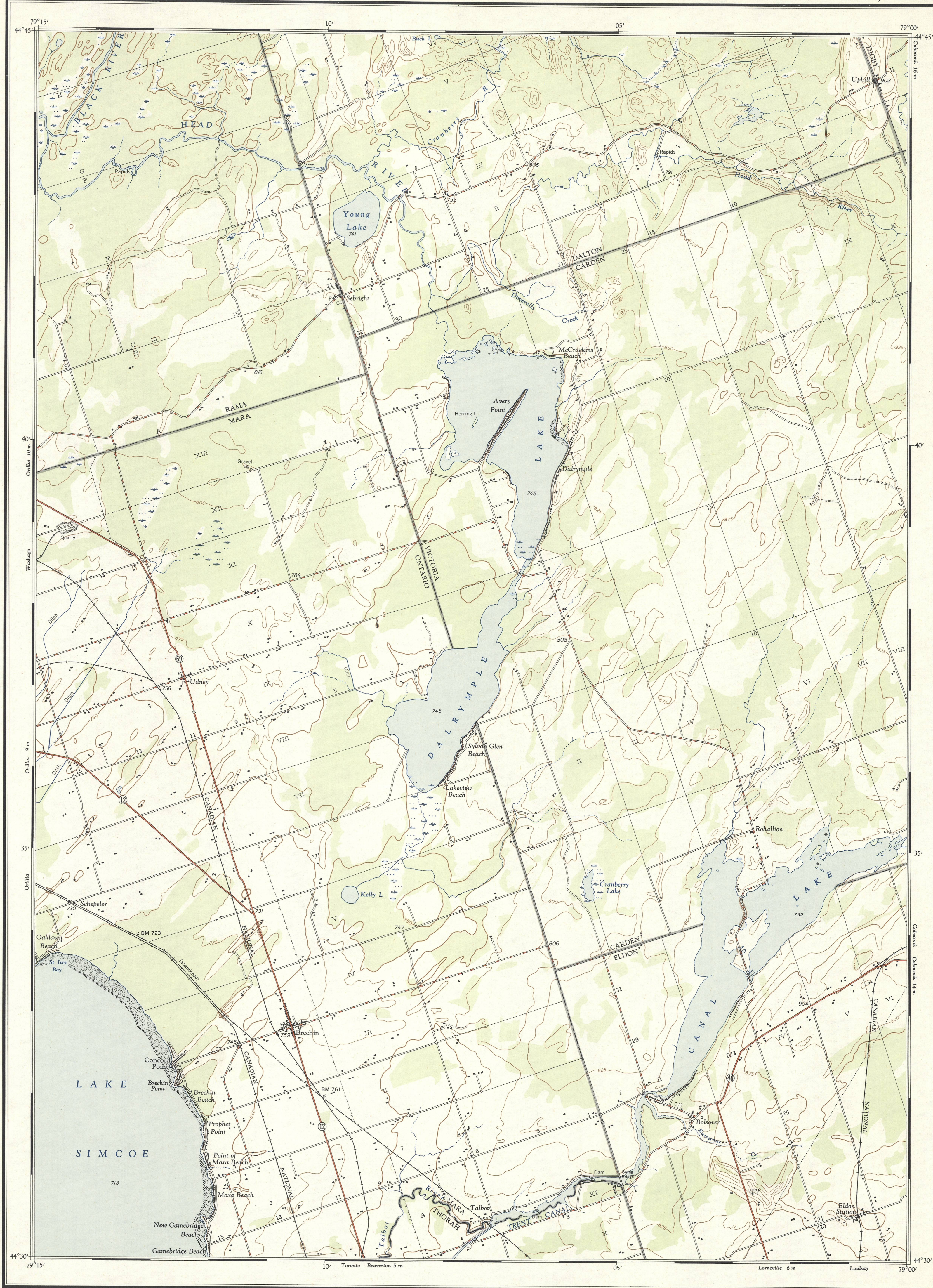
CANADA
MINES AND TECHNICAL SURVEYS
SURVEYS AND MAPPING BRANCH

NATIONAL TOPOGRAPHIC SERIES

1:50,000

SECOND EDITION

CANADA SHEET 31 D/11 EAST HALF



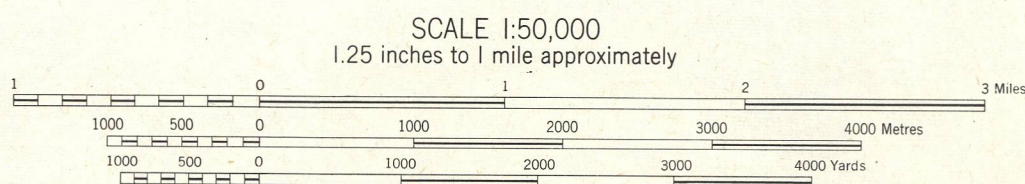
Produced by the Surveys and Mapping Branch,
Department of Mines and Technical Surveys, 1954,
from air photographs taken in 1945.
Printed by the Army Survey Establishment, R.C.E.,
Department of National Defence, 1954.

MAGNETIC DECLINATION 8° 53' WEST
AT CENTRE OF SHEET 1954
Annual magnetic change 2' 30" easterly

ORILLIA
ONTARIO

REFERENCE

Roads:	
hard surface, all weather	more than 2 lanes 2 lanes
hard surface, all weather	less than 2 lanes
loose surface, all weather	2 lanes or more less than 2 lanes
loose surface, dry weather	
winter; cart track	Winter road
trail or portage	
Railway: normal gauge, single track	
Boundaries:	
provincial (monument)	
county or district	
Power transmission line	
Telephone line	
Horizontal control point	
Building	
School; Post Office	



CONTOUR INTERVAL 25 FEET
All Elevations in Feet above Mean Sea Level
North American Datum 1927
Copies may be obtained from the Map Distribution
Office, Department of Mines and Technical Surveys,
Ottawa, at 25 cents each.

**SUPERSEDED
EDITION**

REFERENCE

Church; Cemetery	
Small ponds	
Streams:	
intermittent or dry	
Indefinite	
Marsh or Swamp	
Foreshore flats	
Rocky reef	
Rock bars or awash	
Lighthouse	
Ferry	
Breakwater	
Pier, dock or wharf	
Cliff	
Contours	
Forest	

INDEX TO ADJOINING SHEETS

31D/13	31D/14	31D/15
PENTATH- GUSHENE	GRAVENHURST	MINDEN
31D/12	31D/11	31D/10
ORR LAKE	ORILLIA	FENLON FALLS
31D/8	31D/6	31D/7
BARRIE	BEAVERTON	LINDSAY

ORILLIA
ONTARIO
31 D/11 EAST HALF
SECOND EDITION