

# CHAINS. CHAINS.

(All Sizes in Stock.)

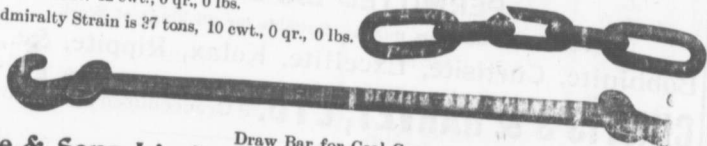
## "EDGES" BEST SPECIAL CRANE CHAINS.

Can not be Excelled for **HIGH CLASS QUALITY** and **WORKMANSHIP**  
They are made of the very best brands of English Bar Iron and by Selected Workmen.

**Makers of every description of Chains**  
**for Mining and all Engineering Purposes,**  
**Coupling Chains and Solid Forged Draw Bars**  
**For Mine Cars, A SPECIALTY.**

This 1 1/2" Draw Bar Coupling Chain broke at  
48 tons, 12 cwt., 0 qr., 0 lbs.

The Admiralty Strain is 27 tons, 10 cwt., 0 qr., 0 lbs.

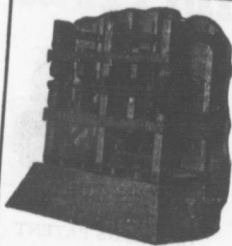


**Edge & Sons, Limited,**  
**SHIFNAL, England:**

Draw Bar for Coal Car.

Tel. address "Edge" Shifnal.  
"Codes" A. B. C. and Bedford McNeills"

## Mining and Milling Machinery



**Fairbanks-Morse Duplex Steam Pumps**  
**Gas, Gasoline or Steam Hoists**  
**Gasoline Air Compressors, Ore Cars and Buckets**  
**FOR ANY DUTY.**

### Nissen Stamp Mills

Better Savings and Fewer Slimes

Half the Power

Greater Capacity per Horse Power.

### Emerson Pulsometer-Type Steam Pumps for Mine Sinking

Will work under 150 feet head.

Will work on air in the suction.

Will prime itself.

Will pump dirty, gritty water. No adjustments; extremely simple

**The Canadian Fairbanks Co., Ltd.**  
**Montreal, Toronto, Winnipeg, Vancouver.**