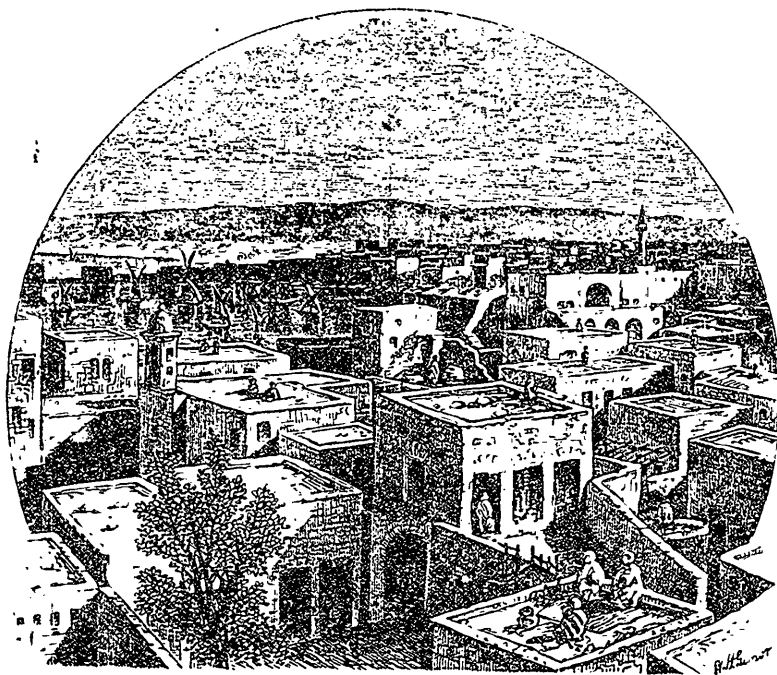


# The Sunday School Guardian

VOL. I.—NEW SERIES.]

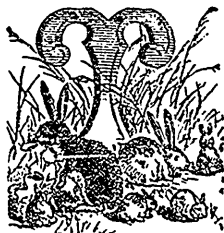
FEBRUARY 22, 1879.

[No. 4.



MODERN TYRE.

## THE FLAT-ROOFED HOUSES OF THE EAST.



HERE are very many allusions in Scripture to the use of the top of the houses which, unless we understand their construction, will seem to us very strange. Such, for instance, are the accounts of sleeping and watching

and pitching a tent on the housetop, and the account

of breaking up the roof to let the man sick of the palsy down into the house where Jesus was. So, also, the laws concerning the battlements of the houses, or the wall surrounding the flat roof. All these will be made plain if we remember that the roofs were flat, and that in Palestine rain seldom fell to an extent likely to cause inconvenience on account of that flatness. The necessity for the battlement wall will be apparent from the picture. These flat roofs are a cool and pleasant sleeping-place in the summer, and here the household often meet to spend the evening after a sultry day.