

and on the right are shrubs of various kinds, forsythias, herbaceous pæonias in flower, etc. This Blue Spruce will be interesting to many of our readers because so many trees of this evergreen have been sent out to the members of our Association during the last few years. The tree is a native of the mountains of Colorado, and is now widely distributed throughout the U. S. and Canada as an ornamental evergreen. Mr. Wm. Saunders, of Ottawa, says of it, "Among the Spruces none is so striking and beautiful as the Colorado Blue Spruce, and more especially those specimens with a distinct steely blue color to the foliage. This color varies in intensity from a faint hue to one of a very decided and striking character. The blue color is most pronounced in the new growth in the spring, and as the summer advances it becomes softened and mellowed to a pale bluish green which contrasts strongly with the bright new growth when it pushes out the following season."

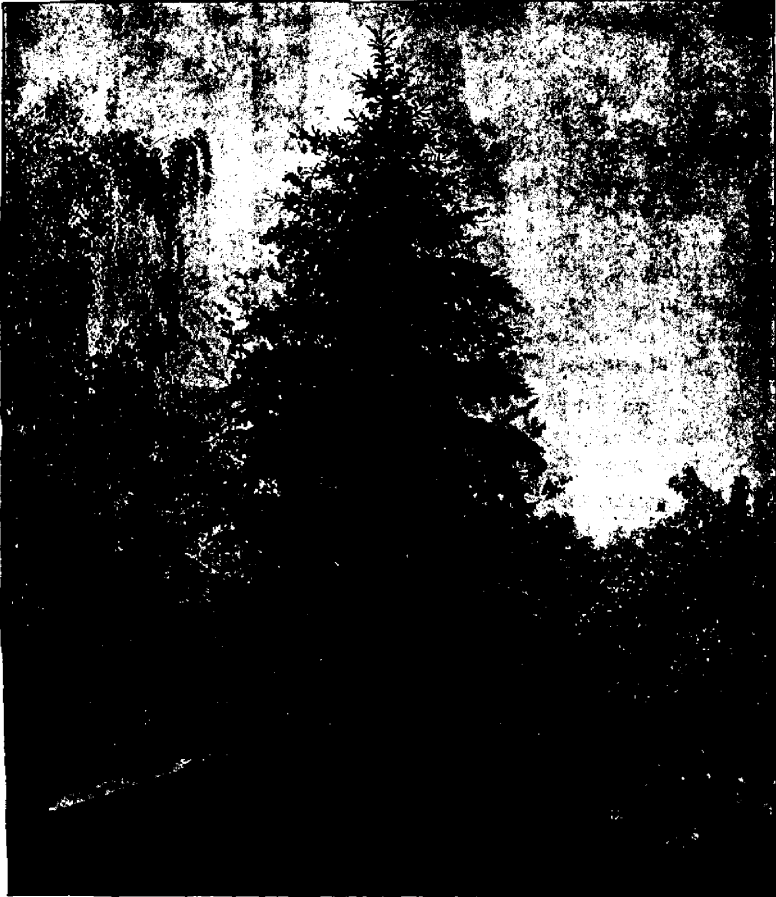


FIG. 916.—COLORADO BLUE SPRUCE.