

Traffic Returns.

| CANADIAN PACIFIC RAILWAY. | | | | |
|---------------------------|--------------|--------------|--------------|-------------|
| Year to date. | 1911. | 1912. | 1913. | Increase |
| Aug. 31..... | \$82,869,000 | \$86,940,000 | \$84,071,000 | |
| Week ending | 1911. | 1912. | 1913. | Increase |
| Sept. 7..... | 2,230,000 | 2,649,000 | 2,496,000 | Dec 153,000 |

| GRAND TRUNK RAILWAY | | | | |
|---------------------|--------------|--------------|--------------|----------|
| Year to date. | 1911. | 1912. | 1913. | Increase |
| Aug. 31..... | \$33,493,694 | \$37,334,509 | \$38,810,815 | |
| Week ending | 1911. | 1912. | 1913. | Increase |
| Sept. 7..... | 1,033,652 | 1,082,457 | 1,099,259 | 16,802 |

| CANADIAN NORTHERN RAILWAY. | | | | |
|----------------------------|--------------|--------------|-------------|----------|
| Year to date. | 1911. | 1912. | 1913. | Increase |
| Aug. 31..... | \$12,779,400 | \$14,493,500 | \$1,714,100 | |
| Week ending | 1911. | 1912. | 1913. | Increase |
| Sept. 7..... | \$336,500 | 376,400 | 382,400 | 6,000 |

| TWIN CITY RAPID TRANSIT COMPANY. | | | | |
|----------------------------------|-------------|-------------|-------------|-----------|
| Year to date. | 1911. | 1912. | 1913. | Increase |
| July 31..... | \$4,435,025 | \$4,582,178 | \$4,955,137 | \$372,959 |
| Week ending. | 1911. | 1912. | 1913. | Increase |
| Aug. 7..... | 149,387 | 159,683 | 173,141 | 13,458 |
| " 14..... | 149,135 | 158,485 | 168,136 | 9,651 |
| " 21..... | 154,293 | 160,110 | 173,035 | 12,925 |
| " 31..... | 210,476 | 231,093 | 255,516 | 24,463 |

| HAVANA ELECTRIC RAILWAY Co. | | | | |
|-----------------------------|----------|----------|---------|----------|
| Week ending | 1911. | 1912. | 1913. | Increase |
| Sept. 7..... | \$53,100 | \$54,537 | \$1,437 | |

| DULUTH SUPERIOR TRACTION Co | | | | |
|-----------------------------|--------|----------|----------|---------|
| 1911. | 1912. | 1913. | Increase | |
| Aug. 7..... | 23,870 | \$25,888 | \$26,196 | \$2,308 |
| " 14..... | 22,982 | 23,418 | 26,229 | 2,811 |
| " 21..... | 23,438 | 23,374 | 26,591 | 3,217 |
| " 31..... | | 33,298 | 37,504 | 4,206 |

| DETROIT UNITED RAILWAY. | | | | |
|-------------------------|-----------|-----------|-----------|----------|
| Week ending | 1911. | 1912. | 1913. | Increase |
| Aug. 7..... | \$208,433 | \$229,356 | \$260,982 | \$31,626 |
| " 14..... | 210,692 | 224,928 | 258,536 | 28,608 |
| " 21..... | 216,459 | 231,430 | 246,466 | 15,036 |

CANADIAN BANK CLEARINGS.

| | Week ending Sept. 11, 1913 | Week ending Sep. 4, 1913 | Week ending Sep. 12, 1912 | Week ending Sep. 14, 1911 |
|---------------|-------------------------------|-----------------------------|------------------------------|------------------------------|
| Montreal..... | \$55,091,335 | \$50,125,140 | \$56,817,891 | \$12,986,428 |
| Toronto..... | 42,187,686 | 37,801,047 | 39,198,928 | 38,779,870 |
| Ottawa..... | 23,357,533 | 3,169,089 | 3,361,185 | 3,530,966 |

MONEY RATES.

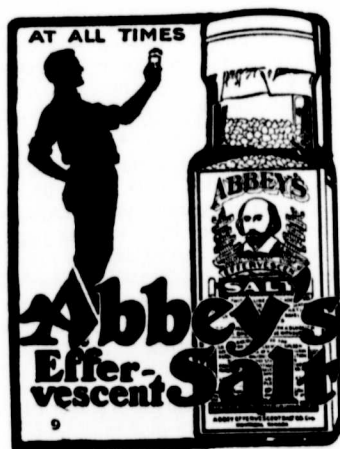
| | To-day | Last Week | A Year Ago |
|---------------------------|-----------|-----------|--------------|
| Call money in Montreal... | 6-6 1/2% | 6-6 1/2% | 5 1/2% |
| " " in Toronto.... | 6-6 1/2% | 6-6 1/2% | 5 1/2% |
| " " in New York .. | 2 1/2% | 2 1/2% | 5 1/2% |
| " " in London | 21-2 1/2% | 21-2 1/2% | 1 1/2-1 1/2% |
| Bank of England rate..... | 4 1/2% | 4 1/2% | 4% |

DOMINION CIRCULATION AND SPECIE.

| | | | |
|-------------------|---------------|-------------------|---------------|
| June 30, 1913.... | \$116,363,538 | December 31, 1912 | \$115,836,488 |
| May 31..... | 113,746,734 | Nov. 30..... | 118,958,620 |
| April 30..... | 114,296,017 | October 31..... | 115,748,414 |
| March 31..... | 112,101,886 | Sept. 30..... | 115,995,602 |
| February 28..... | 110,484,879 | August 31..... | 116,210,579 |
| January 31, | 113,602,030 | July 31..... | 113,794,845 |

Specie held by Receiver-General and his assistants:-

| | | | |
|-------------------|---------------|-------------------|---------------|
| June 30, 1913.... | \$100,437,594 | December 31, 1912 | \$104,076,547 |
| May 31..... | 100,415,562 | Nov. 30..... | 106,698,599 |
| April 30..... | 100,706,287 | Oct. 31..... | 103,054,008 |
| March 31..... | 98,507,113 | Sept. 30..... | 103,041,850 |
| February 28..... | 98,200,04 | August 31..... | 103,142,276 |
| January 31..... | 101,898,960 | July 31..... | 100,400,658 |

**CANADIAN BANKING PRACTICE**

THIRD EDITION. NOW READY.
(HANDSOMELY BOUND IN CLOTH, \$4 PER COPY)

QUESTIONS ON CUSTOM AND USAGE AND LAW. Published under the Auspices of the
Canadian Bankers' Association (Compiled by John T. P. Knight).

The hundreds of questions and answers on Canadian Banking Practice deal with nearly every possible point of practical interest likely to present itself during the daily routine of a bank. The replies relate to acceptances, cheques, endorsements, deposit receipts, letters of credit, circular notes, warehouse receipts, partnership accounts, bankers' lien on goods, forgery, alteration and loss of negotiable instruments, bills of exchange, promissory notes, principle and surety, etc., etc., etc. Mr. J. T. P. Knight, the compiler of "Canadian Banking Practice" has classified and indexed the Questions on Points of Practical Interest. The value of such a work must be apparent, and a copy of the book should be in the possession of every bank official and business man in the country who desires to be informed upon points likely to arise in the course of dealings between banks and their customers.

For Sale at The Chronicle Office, 160 St. James Street, Montreal.