

**LAUGHLIN'S PHARMACY**

**NEAREST UNB**

**Prescriptions insurance coverage filled here.**

**244 Connaught**

The  
ASSOCIATED ALUMNI OF  
The UNIVERSITY OF NEW BRUNSWICK

Cordially Invites

Alumni, Students, Faculty Members and The Public

To Attend The

ALUMNI INSTALLATION BALL

On October 17, 9 P.M. to 1 A.M.

in the Ballroom of the Student Union Building, Fredericton.

---

Music will be provided by The Thomists and  
a luncheon will be served at midnight.

Tickets at \$10 per couple are available at  
the Alumni Office, Memorial Student Centre.

# Gillies Optical

## Contact Lens Centre

We fit the soft Bausch & Lomb Lenses and also the Hard Lenses. Phone 454-9412 for appointment

*Largest frame assortment available in all the new styles from Europe.*

*We duplicate lenses and duplicate frames.*

Two stores to serve you in Fredericton:

**76 York Street**  
**455-6020**  
Monday to Friday  
9 a.m. to 5 p.m.

**Fredericton Shopping Mall**  
**454-9412**  
Open Daily: 10 a.m. to 10 p.m.  
Saturday 10 a.m. to 5 p.m.

We fill all prescriptions for optometrists and ophthalmologists.

Other Branches: Woodstock, Bathurst, Moncton, & Saint John.

*Dean Condon*

OCTOBER 5, 1973

## No way to tie tuition with facilities

By FORRESTORSER

A traditional complaint of Artsmen has been the fact that although they pay almost as much tuition as members of other faculties, they seem to get less for their investment in terms of educational facilities and benefits. There is virtually no way to compare the amount of money brought into the university by the students of a particular faculty, with the amount of the university's budget spent by that faculty, according to Budget Officer S.S. Mullin.

For example, Mullin pointed out, there are about fifteen hundred University of New Brunswick students from out of the province. The university receives grants for only 1145 of them.

Non-New Brunswick graduate students are counted first, since the university receives the largest grants for graduate students. Students of other faculties are then counted, with Arts and Sciences students being counted last since the university receives the smallest grants for students in these faculties.

Because of this system, Mullin says, there is no obvious way to determine how much each student brings to the university.

It is also difficult to estimate how much is spent on the students of each faculty. Using Arts as an example, Dean of Arts T.J. Condon states that while Arts instructors make up thirty-five to forty percent of the university's staff, they do about fifty percent of the instruction, since students in many faculties take courses in subjects;

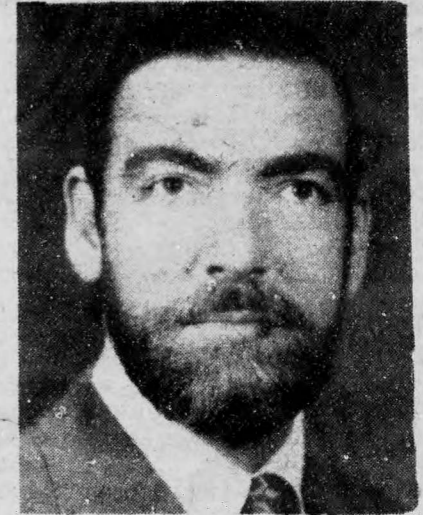
such as the social sciences and math.

At the same time, Condon points out, Arts students take courses such as computer science.

They also use the library more than most faculties, so a large part of the library's budget would have to be included when estimating the expense of the Arts faculty.

In addition Arts students would have to pay some of the common expenses of the university; such as administration and maintenance of the grounds.

Since it is difficult to determine how much the students of each faculty bring into the university, and since it is equally difficult to estimate how much is spent on a given faculty, it is next to impossible to compare the ratio of these two.



Dean of Arts Condon



## Reason

By D

The ruling Board of G... ings have b... behind clos... why this... President o... entative Co... due to trad... more than...

Some bus... ing, purcha... were made... Neale con... would be ab... at the Univ...

However, business th... of Governm... open."

This was Richard, s... Board, who

## Libr

By G

Regulati... Library's... been revis... and facult...

The m... around s... carrels in... them, the... spring. Th... ed enrolm... serious stu... use.

This year... told that... carrels o... having to... night. This... to protest... inconveni... essays.

Chief... responded... Library C... day to rec... governing... ing is the... that mee... second.

Each... applies to... assigned... label and... is actual... certify his... signing a... least week... a period... during wh... signed an... the staff... store the

EX... &... on... gr... lo... CHA... DAU... AND