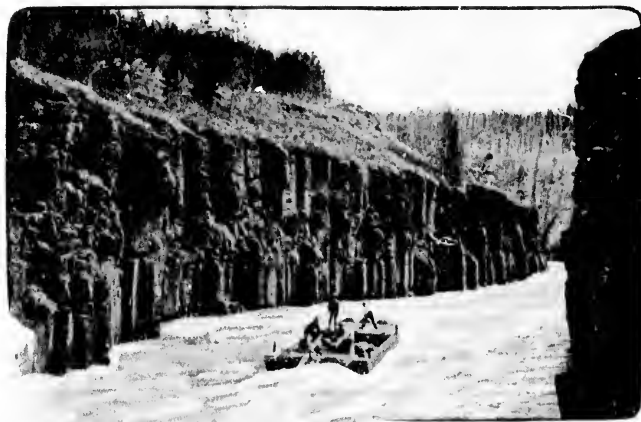


White Pass & Yukon Route



"Shooting" Miles Canyon
in the days of '98

Passengers remaining on the "Gleaner" on Wednesday while at Taku will be charged at the rate of \$1 per meal and the same for berth. Otherwise all meals and berth on this steamer, as well as on the ocean steamer, are included in the cost of the ticket.

Should the tourist bound for Atlin arrive at Skaguay too late to catch either Monday's or Thursday's boat, thus making it impossible for him to connect with steamer leaving Caribou, he can put in his time to exceedingly good advantage at Skaguay. For, as stated by Mrs. Higginson, there are many interesting places in and around Skaguay worth visiting. Also, as previously mentioned, tourists can go to White Horse before visiting Atlin and spend a day or two there. If the visit to White Horse is omitted the trip from Skaguay to Atlin and return can be made in three days, but to provide for