

## THE WINNIPEG EXHIBITION.

Office of the CANADA LUMBERMAN,  
McIntyre Block, August 19, 1904.

Since our last issue Winnipeg has been the centre of great excitement on account of the Dominion Exhibition and almost every line of trade has been influenced thereby, but probably the one to be least affected in this regard is the lumber trade. It is true that, during the preparations, a quantity of lumber was of necessity called into requisition, from which a certain benefit accrued, but, generally speaking, business in these lines has gone on in the usual manner. There are distinct indications that the rush of trade that commenced with the opening of the season has now found its level, and things are steadying down, awaiting the results of the coming crops. Money, too, is getting very tight, attributed generally to the indisposition of the Banks to accept farmers' paper, their adverse experience of last year making them unusually cautious. However, should the harvest be up to expectations, the financial aspect will immediately improve, and a move in trade will be looked for in consequence.

There are also indications of improved conditions with the B. C. mills. During the opening months of the year the trade was greatly favoring the U. S. mills, and much anxiety was expressed, but lately there has been a better proportion of trade going to mills on this side, owing probably to prices showing a better parity.

## LUMBERMEN'S TOOLS AT THE DOMINION EXHIBITION.

Among the several exhibits in the Machinery Hall of the Winnipeg Exhibition which attracted universal attention was that of Shurly & Dietrich, of Galt, Ont. This firm had a prominent position across one end of the building, the wall of which was arranged with a circular display of their various tools and implements, mounted on dark purple plush, the centre-piece being a fine circular saw 7½ feet in diameter, the largest crucible steel plate that has been made. Arranged around this in artistic form were samples of their many tools. There were their "Maple Leaf" lance cross-cut saw and hand saws of the same brand, the quality of which is well known on account of this firm's special secret process of tempering. It is a noticeable feature that Shurly & Dietrich are the only Canadian firm who are doing an export trade in these goods with Australia, New Zealand and United States, which fact speaks well for the quality of their goods, since this has been done in the face of a duty of 30 per cent. They also had on exhibit samples of their harvest tools, which are manufactured by and under the style of the "Maple Leaf Harvest Tools Company," of Tilsonburg.

Another exhibit of great interest to lumbermen was that of the Dundas Axe Works, Dundas, Ont. This firm exhibited a fine collection of double and single bit axes in both overcoat and insert steel, prominent among which was to be seen their well known "Crown Jewel" axe, which we understand is gaining a place in the front ranks among lumbermen.

The James Smart Manufacturing Company, of Brockville, Ont., showed an attractive range of lumbermen's axes and other tools, together with their stoves and generators.

## WOOD-WORKING MACHINERY.

The Goldie and McCulloch Company, of Galt, Ont.,

machine, a saw carriage and frame, and double geared log haul-up. There was a good deal in this exhibit of an attractive nature and much attention was given to it by the various visitors.

The A. R. Williams Machinery Company, of Winnipeg, displayed a range of lathes, drills and wood-working machinery, and also a complete outfit for saw-mills, with engines and boilers. This firm, whose address is 45 Notre Dame street east, carry in stock a full line of all necessary mill and machinery outfits.

The Canadian Iron and Foundry Company, of S. Thomas, Ont., showed samples of their "trolley" wheels, high grade machinery wheels and grey iron castings.

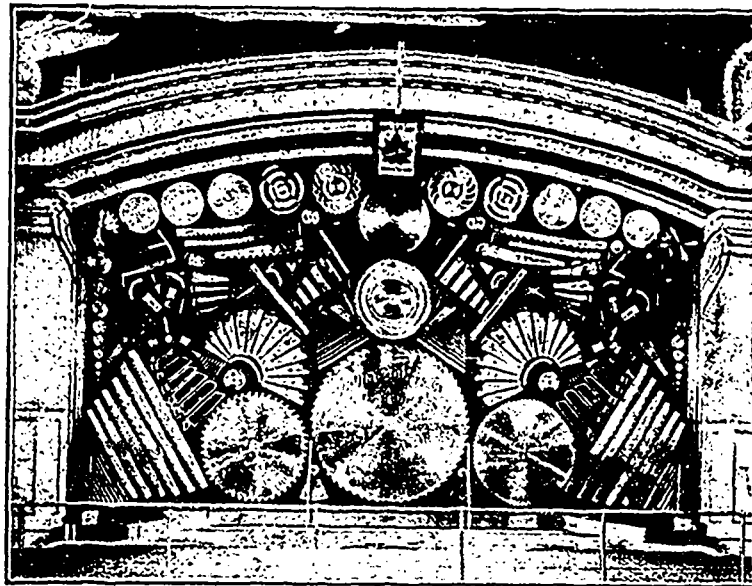
The Stuart Machinery Company, of Winnipeg, the Western agents of the E. Long Mfg. Company, Orillia, had a fine showing of wood-working machines, a prominent feature being their log frame and saw carriage, for which they claim special advantages over other makes. It has an extra wide friction drive, an entirely new saw guide, extra size wheels on log frame, which ensures special ease in running, and a new adjustment to drive, which minimizes wear and tear. They also showed surfacers and matchers, exhaust fans for the removal of dust and shavings, emery wheels and saw sharpening outfits.

The Northern Iron Works, Winnipeg, had an attractive display arranged with their own fencings and castings, painted in colors, enclosing their space. They had on exhibit shafting, boxes, and all kinds of machinery castings, as well as an outfit of circular saws.

The Watrous Engine Works Company, of Brantford, Ont., had one of their No. 7 fire engines on exhibit in the grounds of the Exhibition.

This engine, all cold, can be started in two minutes and in less than five minutes will be throwing a stream of water 100 feet high. At a test at Red Deer it threw two streams with the wind 150 feet and with side-wind 136 feet. Through a line of 1,000 feet hose it is capable of projecting a stream of water through a one-inch nozzle 100 to 120 feet, according to wind, or two lines 500 feet with 2½" nozzles simultaneously 100 feet.

The western selling agents for the Gutta Percha & Rubber Manufacturing Company, of Toronto, had an excellent display of rubber goods, with a special show of their well-known brands of belting and hose foremost amongst which is their "Maltese Cross" special stitched belting, made particularly for dynamos and mill purposes. Their other brands, viz., "Monarch," "Red Strip" and "Lion Brand," were also well in evidence. Their display of fire hose, made under the various brands of "Eureka," "Paragon" and "Red



DOMINION EXHIBITION, WINNIPEG—EXHIBIT OF SHURLY & DIETRICH.

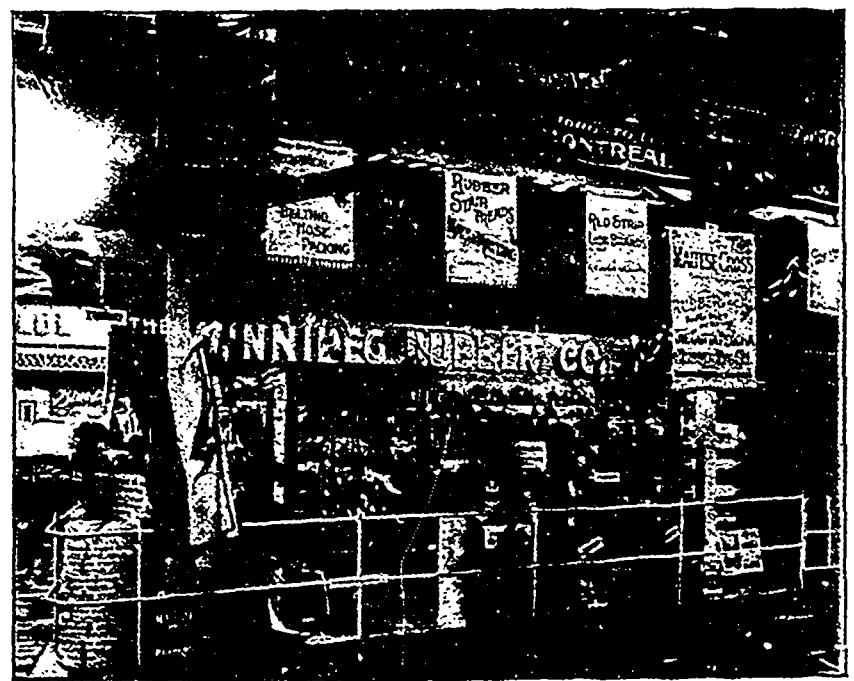
had a fine location extending across the centre of the Machinery Hall, in which they made an interesting display of their machinery, comprising an Ideal high-speed enclosed self-oiling engine, a ten inch moulder, a full set of Philbrick patent adjustable matcher heads, etc.

The Robert Bell Engine and Thresher Company, of Seaforth, Ont., had in operation on the Exhibition grounds some very powerful 20 h.p. traction and portable engines, particularly adapted to saw mill work. They also had on exhibit one of their No. 6 portable saw mills suitable for 12 to 30 h.p. This company received some very excellent testimonials regarding their engines and machinery.

The E. Long Mfg. Company, of Orillia, Ont., had on exhibit in the Machinery Building a creditable display of various machines, noticeable among which were their Clipper shingle machines, Lockport swing saw mills, a three saw double edge lathe and picket



DOMINION EXHIBITION, WINNIPEG—EXHIBIT OF PENBERTHY INJECTOR COMPANY.



DOMINION EXHIBITION, WINNIPEG—EXHIBIT OF GUTTA PERCHA & RUBBER CO.