

Miners Wanted

TO CHEW

PAY ROLL

Plug Tobacco

WANTED.

At the several collieries of the Dominion coal co. Limited, skilled coal miners and mine laborers.

Apply on the works Or by letter

Dominion Coal Company, Ltd

Genuine Garlock Packings

FOR ALL PURPOSES.

Pipe and Boiler Coverings, ENGINEERS SUPPLIES.

also

"Tauril" High Pressure Jointing
the Best Sheet Packing yet
Produced.

THE GARLOCK PACKING CO.
HAMILTON, ONTARIO.

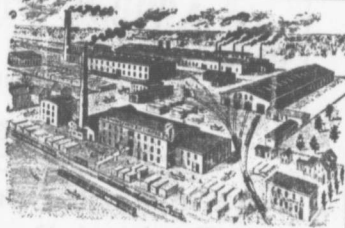
Used by Collieries in Lancashire, Staffordshire
& Yorkshire

'XTERRA' COLLIERY LAMP OIL.

For Marant, Muscic, Deflector or Closed Lamp

PURE WHITE FLAME. LOW PRICE
E. WOLASTON, Cutter St MANCHESTER

Sole Representatives for Canada, AUSTEN BROS.,
Halifax, N. S.



—MANUFACTURERS OF—

RAILWAY
STREET and
MINING

CARS,

CAR WHEELS
FORGINGS &
CASTINGS

Church Pews,
Fittings for Stores, Schools, &
A SPECIALTY.

Large Stocks of Foreign and Domestic Lumber on Sale.

Rhodes, BUILDING MATERIALS
GENERAL

Curry & Co., Ltd.

Branch ROBBIE STREET,
HALIFAX, N. S.

AMHERST, N. S.

INTERCOLONIAL RAILWAY

On and after MONDAY, JUNE 16 1907 trains
run daily, Sunday excepted, as follows:—

—TRAINS LEAVE STELLARTON—

No 144 Mixed for Hopewell	5.55
No 79 Mixed for Trenton	6.30
78 Mixed for Hopewell	6.55
18 Express for Halifax, and St. John	7.40
21 Mixed for Pictou Landing	7.40
62 Mixed for Pictou	7.45
66 Mixed for Mulgrave	8.30
28 Mixed for Pictou	10.55
19 Express for Sydney	11.00
85 Express for the Sydney	12.25
20 Express for Halifax and Montreal	15.40
140 Mixed for Pictou	15.45
101 Mixed for Pictou Landing	15.50
22 Mixed for Hopewell	18.10
69 Express for New Glasgow	18.40
86 Express for Halifax and St. John	19.50
17 Express for New Glasgow	21.15
66 Express for Pictou	21.15

—TRAINS ARRIVE AT STELLARTON

79 Mixed from Trenton	6.30
78 Mixed from Hopewell	6.55
61 Express from Pictou	7.30
18 Express from New Glasgow	7.35
21 Mixed from Hopewell	7.35
85 Express from Trenton	7.35
65 Mixed from New Glasgow	8.00
28 Mixed from Pictou	10.25
66 Mixed from Mulgrave	10.40
19 Express from Halifax and St. John	12.15
140 Mixed from Pictou	12.45
85 Express from Halifax and St. John	15.25
20 Express from Sydney	15.30
101 Mixed from Pictou Landing	15.50
22 Mixed from Hopewell	18.10
69 Express from New Glasgow	18.40
86 Express from Pictou	19.30
17 Express from the Sydney	19.40
66 Express from New Glasgow	21.05
12 Express from St. John and Halifax	21.10
All trains are run by Atlantic Standard time. Twenty O'clock is mid-night. Moncton, N. B. June 15th, 1907	four

Parlor Cars between Halifax and Sydney. Dining Car
on No. 82 train between Halifax and Mulgrave, on No. 89
train between Mulgrave and South River, on No. 19 train
between South River and Mulgrave. On 86 train between
Mulgrave and Halifax.