

THE COMMERCIAL IN THE KOOTENAY

Slocan Towns and Mines—Slocan City, Silverton,
New Denver, Sandon.

Slocan City is situated at the lower end of Slocan lake, in a level valley through which the Slocan river winds its way to the Kootenay river about thirty miles to the south. High wooded mountains rise on either side of the valley, and to the north a very fine view is to be had of a portion of the lake. This is a sportsman's paradise as the lake is well stocked with trout and large game is to be found in abundance back in the mountains. A railway has been built from Nelson to this point, and from here a steamer conveys passengers and freight to Roseberry on the Nakusp & Slocan railway.

five general and two hardware stores, tinsmith, druggist, etc.

Among the mining claims here the Arlington is the best known. This was taken over last year by a new company, and since then a great deal of development work has been done. They have put in an eighteen-horsepower boiler and hoist, and are at present employing about fifty men, which number is being steadily increased as room permits. This mine has shipped some ore which turned out satisfactory.

The Joker group at the head of Ten Mile Creek is now being worked by the Excelsior Mining Co., after being closed down for a while last year.

The Black Prince is being worked by a small force. Several carloads of ore have been shipped which proved to be very high grade.

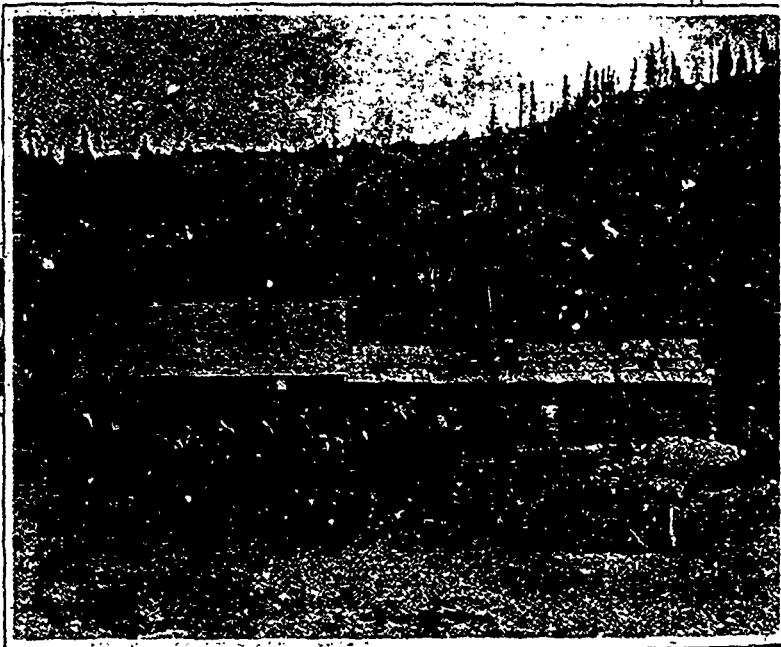
The Enterprise on Ten Mile Creek has been sold to the London and B. C. Goldfields, Ltd., and is one of the well-known properties here. This mine has already shipped a large amount of ore and has a large amount ready to ship.

On the Tamarac some 400 feet of tunnelling has been done. This is another good body of ore carrying galena, zinc and silver sulphide.

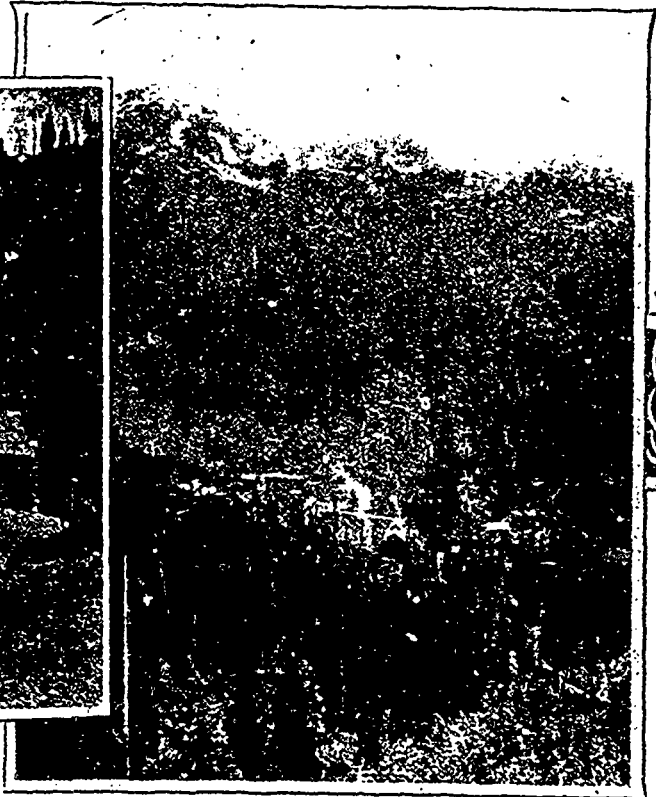
It is thought that the Chapleau will turn out to be one of the big mines of this district. It has been bonded to an English company, who are now working it and it is probable that a stamp mill will be put in this year.

The Two Friends and Bank of England have not been worked of late although a large amount of development work has been done on them. These are looked upon as good properties.

Work is also being done on the Lilly, Rainbow, Barnet group, Alexandria, St. Lawrence, Bertha, Lone Dutch.



Pack Train at Antoine near Kaslo.



Jackson Basin.

This town is only three years old as previous to March, 1897, it contained only about half a dozen buildings. That spring, however, saw a great rush of people who with feverish haste constructed buildings and opened up stores and hotels with the usual results that business was overdone, and the town received a setback from which it is only now recovering. Capital for some reason has been slow in coming in and a great deal of the development work has been done by the prospectors themselves. While this speaks well for the properties still, it means that work has been greatly retarded for want of money. Capitalists however, are now becoming interested in this district and the prospects for the present year are very good. The business places here include

This is a developed mine and has already shipped a lot of ore which gave high returns and they are in a position to resume shipment at any time.

The Evening Star, bonded by Hugh Sutherland, is on Dayton creek, a tributary of Springer creek. Several hundred feet of development work in shafting and drifting has been done on this claim, the ore of which is quartz, with silver sulphide and pyrites with some gold.

The Calumet and Hecla is a large ledge of low grade galena. Between two and three hundred feet of development work has been done and a small force of men are now working on it.

The Ohio group is thought to be the same lead as the Arlington and Enterprise and the work done has showed up very well.

man, Alpine Monument group, White Sparrow, Kilo Smuggler and Howard Faction.

This is only a partial list of the properties in this district now being developed. One great drawback has been the difficulty in getting the ore out as the claims are some miles from the town and as yet there has been very little road work done and the ore has had to be brought down by pack train mostly. The government, however, have built a road to within two miles of Arlington Basin and it is expected that this will be completed this year and a road also built up the first north fork of Lemon creek. These roads and others, which are to follow will lessen the expense and facilitate the handling of the ores so that more mines will be in a position to ship.