

JOHN HALLAM,83 & 85 Front St. East, - - - Toronto
and88 Princess Street, - - - Winnipeg
Wholesale Dealer in**DOMESTIC AND FOREIGN WOOLS**

Sumac, Japonica, &c.

LONG & BISBYDR. LERS IN
Foreign and Domestic**WOOL AND COTTON**GENERAL COMMISSION MERCHANTS
HAMILTON, ONT.**W O O L .****A. T. PATERSON & CO.**

MERCHANTS,

35 Francois Xavier St., Montreal.

REPRESENTED BY MR DAVID GUTHRIE.

THE SMITH WOOLSTOCK CO.Manufacturers and Dealers in all Lines of
Wool Stock, Shoddies, &c., Graded Woolen
Rags, Carbonizing and Neutralizing.Best prices paid for Wool Pickings, Woolen
and Cotton Rags, Metals, &c. Hard Waste, &c.,
purchased or worked up and returned.

210 Front St. E., Toronto | Foot of Ontario St.

ROBT. S. FRASER**Wools, Cottons, Noils, Yarns**

Specialties:

English Pick Lambs and Downs

Foreign Wools and Noils

Egyptian and Peruvian Cottons

Fancy Yarns

3 St. Helen St., MONTREAL

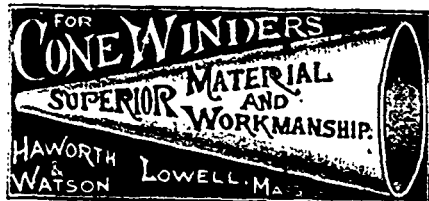
WM. D. CAMERON,

Woolen & Cotton Manufacturers'

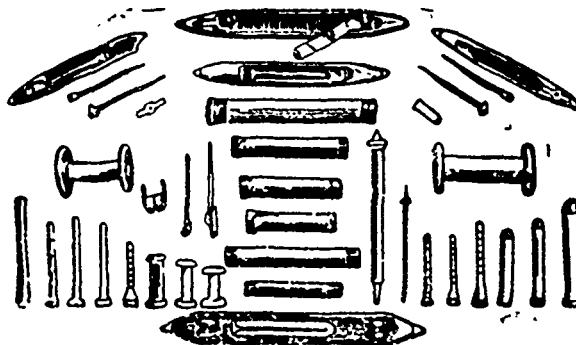
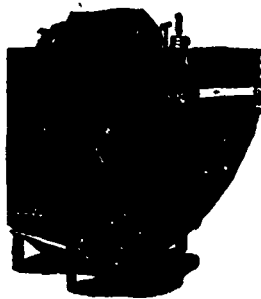
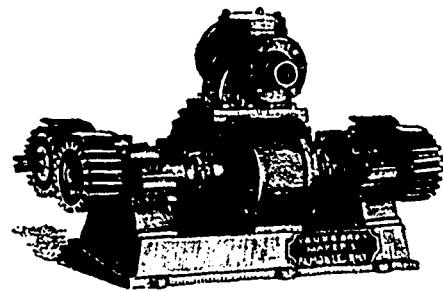
Agent,

HALIFAX, N.S., & ST. JOHN, N.B.

Address P.O. Box 401, - HALIFAX, N.S.

**HETHERINGTON & ANDERSON,**

YORK HOUSE, King St., NOTTINGHAM, ENGLAND.

KNITTING MACHINES. Shirt, Pant and Rib Top Machinery, Lock-stitch
(two threads) Seaming Machines, Machines for Crochet and Embroidery
Work. SPECIAL AND LATEST CONSTRUCTION.**Lachute Shuttle and Bobbin Works**We are the largest Shuttle
Manufacturers in Canada.Slubbing, Roving and all kinds
of Bobbins and Spools for
Cotton and Woolen Mills.We have always on hand
a large stock of
Thoroughly Seasoned
Lumber.Orders solicited and all work guar-
anteed to give satisfaction.**JOHN HOPE & CO.**
LACHUTE, P.Q.**MISSISSIPPI IRON WORKS**ESTABLISHED
1875Manufacturers of English or American Pulling Mills and Washers, Wool Pickers, Ex-
haust Fan Drriers, Dusters, Rotary Force Pumps for Fire Duty, Roller Feed Pumps,
Shafting, Hangers, Castings, Pulleys, Gearing, Forgings.

Full equipment of mills of every kind.

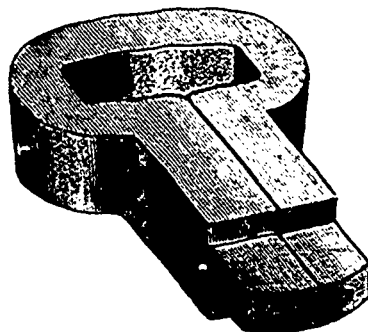
YOUNG BROS., Almonte, Ont.

WILLIAM CRABB & CO.

Manufacturers of all kinds of

**Hackle, Gill, Comb and Card Pins, Picker Teeth, Needle
Pointed Card Clothing in Wood and Leather for
Flax, Jute, Tow, etc.**Hackles, Gills and Wool Combs made and repaired; also Rope Makers' Pins, Picker Pins, Special
Springs, Loom and Shuttle Springs, English Cast-Steel Wire, Cotton Banding and General Mill Furnishings.

Bloomfield Avenue and Morris Canal, NEWARK, N. J.

**JOHN W. BARLOW**

Manufacturer of

LOOM PICKERS,

LAWRENCE, MASS.

This cut represents Barlow's Pat. Bow Picker
with solid interlocking foot. Pat. Feb. 26, 1889