

BUFFALO BLACKSMITHS' FORGE.

We take pleasure in showing in the accompanying illustration the latest pattern of the Buffalo blacksmith's forge.

The distinguished features of this make of forges are: Easy lever and swivel movements; steady, powerful blast for heavy work, as well as even light blast for light work; no dead center to overcome in starting, all of which are important factors in a perfect machine. The bearings are of hardened steel and of more than ordinary length. By referring to the illustration which shows the No. 0 size, it will be seen that a large fan case is afforded (14 inch), from which a remarkable amount of blast is produced, considering the power required in operating. The height is 30 inches, size of hearth 28x50 inches; weight, with water tank, three hundred pounds. A welding heat on three inch iron is produced in five minutes, and on four inch iron in ten minutes.

Another point of importance is the length of time blast continues after the stroke is made, this being sufficient to allow the operator to work upon the iron quite a time before it ceases.

This No. 0 forge is also offered in form arranged for attaching belt for general use in large shops where power is used, being built complete with tight and loose pulleys, also cut off for the blast, which permits the fire being regulated to any degree.

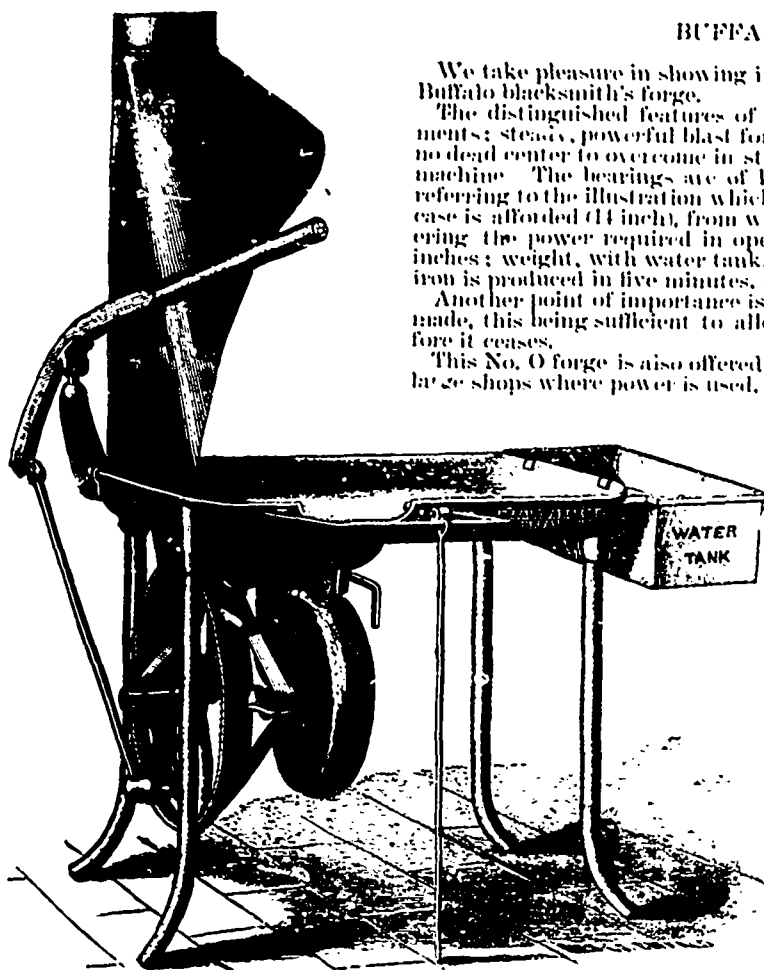
It is safe to say that not more than one out of every ten of the oldest users of the brick forge and bellows, no matter how suspiciously he may at first look upon the improved machines, now so widely supplanting these old timers in modern shops, will refuse to concede the points of merit claimed, when once a thorough test is given.

The secret leading to the wide spread popularity of the Buffalo blacksmith's forges and hand blowers is soon revealed when one looks into the conscientious manner of their manufacture; nothing but the very best of material and workmanship being employed.

For catalogues and prices, address the Buffalo Forge Co., Buffalo, N.Y., who make a variety of forges and blowers for every possible duty, and all blacksmith shop equipment.

Andrew Machen, of Kingston, Ont., is replacing his boilers. The Jencks Machine Co., of Sherbrooke, Que., are supplying the new plant.

Messrs. Lippert, Schaefer & Co., Waterloo, Ont., have placed their order with The Goldie & McCulloch Co., Galt, Ont., for engine and boiler for their new factory now being erected in Waterloo.



THE PETERBOROUGH CARBON AND PORCELAIN CO., Ltd.

MANUFACTURERS OF

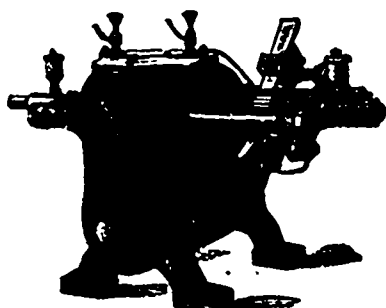
CARBON POINTS for all Systems of Arc Lights,
BATTERY PLATES, CARBON BRUSHES,
And all kinds of **PORCELAIN** for **ELECTRICAL** and
HARDWARE LINES.

All goods guaranteed equal in quality to the best
manufacturers in the world.

PETERBOROUGH, - - ONTARIO

KAY ELECTRIC CO.

Manufacturers of



DYNAMOS

FOR

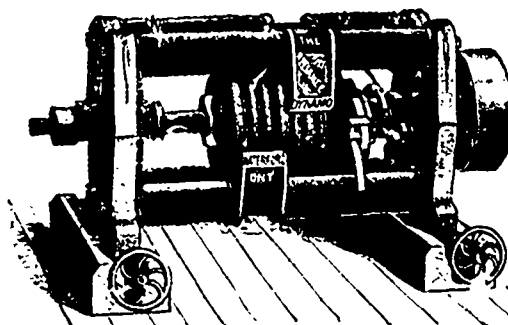
**ARC and INCANDESCENT
LIGHTING.**

**PLATING MACHINES,
MEDICAL BATTERIES**

And all kinds of

ELECTRIC APPLIANCES

HAMILTON, ONT.



THE RELIANCE ELECTRIC MANFG. CO., Ltd.

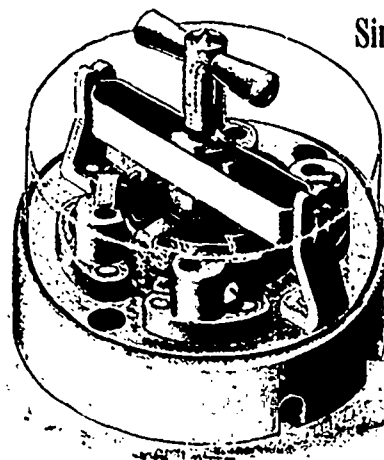
Manufacturers of The
Reliance System of Arc
and Incandescent Lighting

and Power Apparatus. The Rac System of Electric Railway.

Head Office and Works - WATERFORD, ONT.

Branch Offices:

Toronto, Ont., 111 King St. West. Montreal, T. W. Noss, 749 Craig St.



Single and Double Pole SWITCHES

From 5 to 150 Amperes.

DOVETAIL ROSETTES.

LAMP SOCKETS.

All of Superior
Workmanship and
Design.

Manufactured
by the

**PERKINS' ELECTRIC
SWITCH MFG CO.**

Hartford, - Conn.

For Sale by the Canadian General Electric Co., Toronto.