

GRASP THE OPPORTUNITIES

Large Size Coloured QUILTS.

Here are quilts you would like, large generous spreading quilts in Pink and White, Green and White, and Gold and White, high-grade finish, others in all white; values are here up to \$3.80. Don't miss the opportunity, the supply is small, early shoppers get the plums. Special, Friday, Saturday and Monday

\$3.28

THIS SALE AFFORDS

The difference between buying now and later means dollars saved for other uses. And the saving of dollars these times is of chief importance. COME! COMPARE! and EXAMINE these values for

FRIDAY, SAT. & MONDAY.

HAVE A LOOK AT THESE

Excellent WADDED QUILTS

12 only, extra heavy; both sides alike. They show some very handsome patterns; well quilted. These are all we have left from a case lot. Come along and see the Friday, Saturday and Monday Special.

\$4.45

DAMASK TABLE CLOTHS.—Half-bleached, Crimson bordered Table Cloths very handy for the breakfast Table, medium size, long fringed edging, serviceable cloths that will prove helpful in saving the wear of your good ones. Reg. \$1.00. Friday, Saturday and Monday

90c.

Values Picked at Random.

MEN'S CAPS.—An assortment of Men's English Tweed Caps, some with one piece crown, others the ordinary stitched piece crown with button top, made in good looking patterns, light, medium and dark. Reg. to 80c. Friday, Saturday and Monday

69c.

MEN'S WORKING PANTS.—Well made pants, extra strong materials, they come in mottled greys and plain navy, made in roomy sizes, and will stand up against hard usage, far better value than you would expect for the price. Regular \$2.00 value. Fri. Sat. and Monday

\$1.75

MISSES' BOOTS.—A comfortable fitting boot, in fine Dongola Kid, self tipped toe, low heel, 8 button height, a boot we can well recommend; sizes 11 to 2. Reg. \$3.00. Friday, Saturday and Monday

\$2.85

MEN'S LACED BOOTS.—An extra good boot in heavy box calf, an excellent boot for present wear, heavy sole and heel, strapped backs, Blucher cut, Box Toe; all sizes. Reg. \$5.00. Fri. Sat. and Monday

\$5.75

SIDEBOARD CLOTHS.—Handsome cloths for your sideboard, they match that pretty centre we advertise for this week also, in linen, make, well embroidered, scalloped edge; size 18 x 54. Reg. 90c. Friday, Saturday and Monday

79c.

ART SATEENS.—Some very pretty floral patterns. Six or seven pieces to decide from; light and dark patterns; 31 inches wide. These are really good quality, excellent for coverings hangings or drapes. Reg. 35c. value. Fri. Sat. and Monday

30c.

HUCK TOWELING.—Quality Toweling bought last Spring, offering extra good value at to-day's price; 25 inches wide, the strongest toweling you can buy for hard wear. Reg. 40c. the yard. Friday, Saturday and Monday

36c.

GLASS TOWELING.—A real good Glass Toweling, 24 inches wide, blue line check, extra strong quality. This is value to-day for 24c. per yard. Friday, Saturday and Monday

20c.

TRAY CLOTHS.—An assortment of these in fancy embroidered White Linens, wide and narrow hemstitched borders and drawn thread work; extra good quality; good value at 60c. Friday, Saturday and Monday

53c.

CIRCULAR TABLE CENTRES.—A box of beauties that stock taking brought to light, extra large Circular White Linen Centres, 20 inches in diameter, generously embroidered and relieved with drawn thread work, scalloped edge. Very handsome. Reg. 80c. Fri. Sat. and Monday

79c.

Stock-taking has brought to light some particularly good Values in the Showroom.

80c. SILK SCARVES for 29c.

A clearing of Ladies' Silk and Silk Eolene Hemstitched Scarves, 2 1/4 yards long and a half yard wide; becoming shades of Navy, Sky, Green, Purple, Grey and White, etc. Reg. values to 80c. each. Special Friday, Sat. & Monday

29c.

LADIES' NIGHT GOWNS.—Tis a pleasure to offer such value. Dainty Cream Flannelette Nightgowns with rolled collar, feather stitchings, others with V neck, long sleeves, made up in generous sizes. Reg. \$1.60. Friday, Saturday and Monday

\$1.39

CHILDREN'S UNDERSKIRTS.—They come with or without body and in plain shades of Pink, Sky and White Flannelette, well shaped and stitched sizes to fit girls from 6 to 10 years. Reg. 40c. Friday, Saturday and Monday

34c.

LACE AND NET SLEEVES.—A variety line of these in Paris shade, Cream shade, others in Black and White, Spotted, Plain and Tucked. Reg. values to 40c. Friday, Saturday & Monday, per pr. 16c.

CHILDREN'S & MISSES' PLAID SETTS.

Pretty little Plaid Elder Sets; Cap and Scarf fur trimmed, fur tails at scarf end and buttoned cap, with fur tail at side; very warm and comfortable looking. \$1.20. Fri. Sat. and Monday

87c.



CHILDREN'S WOOL CAPS.—Here is a splendid little winter cap, in soft White Elder, others in pretty plaid patterns, buttons at side and silk tassel, a nice cap for the rink. Extraordinary low Friday, Saturday and Monday

8c.

LADIES' UNDERSKIRTS.—Heavy weight flannelette Underskirts in White, Striped and Fancy, finished with wide flounce, button hole edge, shaped band, the undershirt you will surely need. Regular \$1.10. Friday, Saturday and Monday

89c.

A CLEARING LINE OF BLACK WINGS.—Some splendid values to be found here; you are sure to get something to brighten up that hat you have probably stowed away for another time; values to 60c. Friday, Saturday and Monday, your choice 29c.

Little Items for Little Folks.



INFANTEES.—Neat little fine knit Infantees for the little ones, we have them in White and Navy, you always need an extra pair. Reg. 22c. pair. Friday, Saturday and Monday

18c.

WHITE INFANTEES.—These have a nice fleecy finish, real warm looking and finished with a turn over cuff, silk stitched at edge. Special, the pair, Fri. Sat. and Monday

25c.

BOOTKINS.—Warm white wool Bootkins for the little ones, these bootkins are made with felt, very comfortable for the baby when out in its sleigh. Just a box of assorted sizes left. Special the pair, Friday, Saturday and Monday

45c.

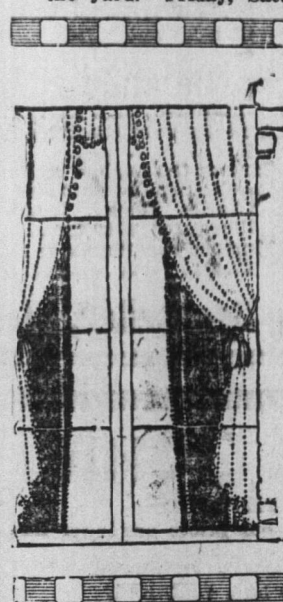
CHILDREN'S CLOTH SPATS.—These come in assorted sizes, 7 to 9 button length, navy cloth make, a comfortable well shaped legging for winter wear. Reg. 60c. the pair. Friday, Saturday and Monday

54c.

Curtains and Curtainings Get a Quick and Decisive Cut in Price.

MADRAS MUSLIN.—Just a piece of this, a Curtain goods that will give extra good value; looks well, washes like new, has a clinging appearance for Curtains or Drapes. Reg. 60c. the yard. Friday, Saturday and Monday

49c.



CASEMENT CLOTHS.—Closely woven Cream Caseament Cloths, plain centre and broad floral band border; these give everlasting wear, will wash and rewash with impairing the appearance. Reg. 25c. yard. Friday, Saturday and Monday

22c.

SASH MUSLINS.—Very neat White Sash Muslins, twenty-three inches wide, finished with a 2 inch lace insertion band border; these are strong and wash splendidly, inexpensively priced for this Sale. Special, per yard, Friday, Saturday and Monday

16c.

CLEARING LINE OF PRETTY White Lace Curtains.—36 pairs in the lot, very neat patterns, strong plain mesh centres and finished with a very pretty border wave edge, 2 1/4 yards long. Our Regular \$1.60 pair. Friday, Saturday and Monday

\$1.38

A BIG SPECIAL IN BLOUSES

for FRIDAY, SAT. and MONDAY. \$3.00 VALUES for \$1.29.

Here is an unusual opportunity to secure a really high grade Blouse at less than half the price. Exquisite styles in Georgette Crepe, plain White Silk, Shantung, Fancy Net and Nylon Blouses; low neck, long sleeves, trimmed with silk braid and fancy buttons, etc.; sizes from 36 to 44 inch bust. Our regular values to \$3.00. Friday, Saturday and Monday

\$1.29

4 SPECIALS 4

MIXING PANS.—In stout Grey Enamel; 2 handles; large size. A beauty for the price. Friday, Saturday and Monday

\$1.19

COAL SHOVELS.—Japanese Coal Shovels, strong and durable. Friday, Saturday and Monday, Special

8c.

WRINGING PANS.—Heavy Blue Enamel; extra large size, double weight. Friday, Saturday & Monday, Special

74c.

HOSIERY VALUES that bring savings on every purchase.

GIRLS' AND BOYS' HOSE.—Here is just the very line you need for cold weather wear, stout Wool Hosiery in a heavy rib finish, equally serviceable for boys or girls; the warmest you can buy. Special Friday, Saturday and Monday—

The Smaller sizes, 54c Larger sizes, - - - 64c

MEN'S HALE HOSE.—We offer a very good line of these in plain and heavy ribbed, fast black, good-wearing socks in a nice medium weight; assorted sizes. Reg. 40c. value. Friday and Saturday

34c.

LADIES' FLEECE HOSIERY.—We are well stocked with Hosiery values. Here we offer a good Black fleece-lined hose with heavy rib tops, plain leg and vamp; warm enough for the coldest weather. Special the pair Friday, Saturday and Monday

45c.

HIGH ARCADE HOSE.—Another line of fast Black, plain finish winter Hosiery; double fleece; extra good wearing and closely woven; assorted sizes. See this line. Friday, Saturday and Monday, Special

33c.

BOYS' COAT JERSEYS.—Just a nice weight for wearing under his coat. They come in Grey shade only, with snug-fitting collar. At our special price they come with in easy reach. Friday, Saturday and Monday

65c.

BOYS' STORM RUBBERS.—Our best selling line in Boys' High Cut Storm Rubbers, heavy sole and heel; sizes 1 to 5 only. Special, the pair, Friday, Saturday and Monday

78c.

BOYS' LACED BOOTS.—A strong, serviceable, good-wearing Boot for the bigger boys; Gunmetal vamp and dull kid top; Blucher style; sizes 1 to 5. Regular \$2.30. Friday, Saturday and Monday

\$2.90



James Baird LIMITED

From the Dress Section COME SAVINGS that YOU Should AVAL of.

CALEDONIA WINCEY.—A most serviceable double width goods in faint Cream shade; washes perfectly; makes up well for Ladies' Nightdresses, Children's Dresses; nice for winter Blouses also. Regular 60c. Friday, Saturday and Monday, per 54c.

BLOUSE PLAIDS.—A very generous assortment of pretty Tartan Plaids in large and small patterns. These have a silk-like appearance, 36 inches wide and offer you choice of light and dark mixtures. Try Blouse length from this Plaid. Friday, Saturday and Monday, Special, per yard

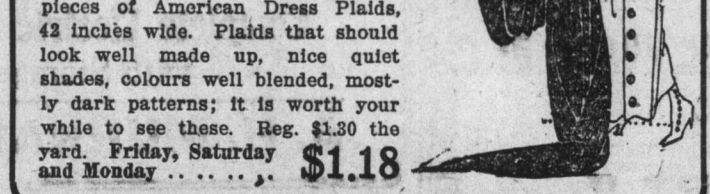
32c.

WHITE CHINCHILLA.—54 inch goods, excellent material for making up children's coats and caps for winter wear, we have a piece left over which we intend clearing out at a special cut price. Reg. \$2.30. Friday, Saturday and Monday

\$1.98

DRESS PLAIDS.—We offer several pieces of American Dress Plaids, 42 inches wide. Plaids that should look well made up, nice quiet shades, colours well blended, mostly dark patterns; it is worth your while to see these. Reg. \$1.30 the yard. Friday, Saturday and Monday

\$1.18



Economy Prices on Men's Wear

MEN'S PYJAMA SUITS.—A package or two left over from last season, warm and comfortable Sleeping Suits in a strong Flannelette make; full sizes, striped patterns, turned down collar. Value for \$2.30. Friday, Saturday and Monday

\$1.85

NEGLECTE SHIRTS.—Your choice of Striped or Fancy White, in soft bosom style; Shirts good enough for Sunday wear; true-to-fit sizes, soft cuffs. Our regular line of Dollar Shirts. Friday, Saturday and Monday

90c.

MEN'S FLANNELETTE SHIRTS.—These come in a nice Flannelette make, good roomy shirts, in neat striped patterns; a very serviceable working Shirt with collar attached. They stand the wash test. Reg. 95c. Friday, Saturday and Monday

85c.

SOFT COLLARS.—We have an immense stock of these in assorted makes, all white, high and low cut, snug fitting collars that you would like, buy for future needs. They save the laundry bills. Special each Friday, Saturday and Monday

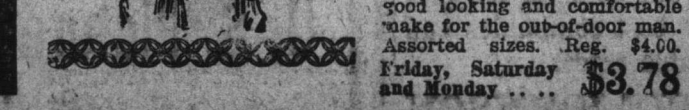
14c.

MEN'S COAT JERSEYS.—A special lot in all grey, with convertible collar; a real heavy make that would be appreciated by the workman or anyone out of doors during the frosty weather. Reg. \$1.50. Friday, Saturday and Monday

\$1.28

MEN'S COAT JERSEYS.—Here is a very serviceable Navy Coat Jersey, in fancy ribbed finish, plain facings, V-neck. All Navy shade; specially good looking and comfortable make for the out-of-door man. Assorted sizes. Reg. \$4.00. Friday, Saturday and Monday

\$3.78



The Tonnage Committee and War Insurance.

Editor Evening Telegram.

Dear Sir,—With reference to war insurance placed by the Tonnage Committee on fish shipped to the Mediterranean by steam under their control. We note in your editorial of last evening's issue, that the reason given for the Government writing this insurance was, because neither Lloyd's or other Companies would accept same. This statement is not altogether correct, and in justice to the Companies we represent and to ourselves, we would say, that had we been given the opportunity to cover a portion of the fish shipped, we would have done so, and as a matter of fact, had insured some of the cargo by the s.s. Rutenfels, which was afterwards cancelled by the Assureds, who stated, they had been notified by the management that the fish could not be shipped unless the war insurance was underwritten with the Government, making it compulsory for us to arrange cancellation of the war insurance already placed on their portion of the cargo, through us with Lloyd's and for Companies, who write for us large lines of both war and marine insurance.

Yours very truly,
TESSIER & CO.
St. John's, Jan. 9th, 1918.

Colonel Peters D. S. O.

A late issue of the Montreal Star says:

"Colonel Charles A. Peters, of Montreal, who receives the Distinguished Service Order, is a prominent figure in medical circles also. In 1900 he went to London and qualified for the degree of M.R.C.S., England, and L.R.C.P., London. He then volunteered for active service in South Africa, where he served 18 months in hospital and in ambulance train work. On his return to Montreal he joined the Canadian Army Medical Corps, serving for 10 years, when he retired with rank of major. In December, 1915, he recruited the 9th Field Ambulance for service abroad, and within three months it was completed and on its way overseas. Immediately after, Colonel Peters and his men were in the field, attached to the Third Canadian Division, with which they saw much service at the Ypres salient, later seeing service at the Somme and elsewhere. In the fall of 1916 he was appointed assistant director of Medical Services. He is a native of Newfoundland and a graduate of McGill University, and practiced in Montreal for a number of years before going overseas."

Colonel Peters is a son of J. E. P. Peters, Esq., of this city. He was mentioned by Sir Douglas Haig in despatches early in 1917. We congratulate father and son on the high honors won by the latter.

World Will Be Short of Sugar Next Year.

But George M. Rolph, Hoover's Aid, Says the Price Will Probably Be Cut Here—Contradicts Speckles—Tells How Prohibition Increases Sugar Demand—Hoover Takes Stand at Noon To-day.

Washington, Dec. 21.—A serious and world-wide shortage of sugar next year was predicted by George M. Rolph, head of the sugar division of the Federal Food Administration, while testifying to-day before the Senate investigating committee.

"Present figures indicate that the shortage will be about 400,000 tons, or 7 per cent. of the estimated requirements, which have been placed at a low figure, but it is probable the per centage will be higher," Mr. Rolph said. "In face of this the Food Administrator expects to reduce the price 1 cent a pound."

"The total requirements next year will be 6,170,000 tons, outside the Central Powers, while the amount of sugar available is 5,705,000 tons. These figures depend on a big crop in Cuba and the probability of obtaining some sugar from Java, which has long been cut off on account of inadequate shipping facilities."

Senator Jones asked Mr. Rolph whether it was true that England, France, and the United States were all seeking sugar.

"They are all short of sugar," Mr. Rolph replied. "France and England have both cut their per capita consumption about 25 per cent."

A serious shortage was averted in 1915 and 1916, Mr. Rolph said, because transportation facilities, particularly shipping, were adequate. Ships were then available to move the large supply in Java, he said, while now the German U-boats had cut down allied shipping so that it was inadvisable to make the long trip from Java.

"Isn't this the situation now?" asked Senator Jones. "The production for next year probably will be larger, but owing to the shipping conditions the available supply will be cut down."

"That is it, exactly," replied Mr. Rolph. "Efforts were made to have Japanese ships bring sugar from Java to the United States this year, but this was found to be impossible."

S!

es having

we have e, Green

In Grey k, Navy k, Olive checks.

Cardinal

yard.

ers.

URE.

W Furniture,

ich we will

ear,

tending to buy well to see same.

es,

, Rockers

hipment of

pecial prices.

D., Ltd.,

ohn's.

White linen is promised for years blue suits. Cardinal is actually seen and red umbrellas.

uropean Agency

Wholesale indents promptly sent at lowest cash prices for all and Continental goods, including books and Stationery, Toys, Shoes and Leather, Chemicals and Druggists' Sundries, Earthenware and Glassware, Motor Cars and Accessories, Wrappery, Millinery and Fancy Goods and Pertumery, Hardware, Machinery and Metal, Jewellery, Plate and Watches, Photographic and Optical Goods, Provisions and Othmen's Stores, etc., etc.

Commission 2 1/2 p.c. to 5 p.c. Trade Discounts allowed. Special Quotations on Demand. Sample Cases from \$50 upward. Consignments of Produce. Book count.

William Wilson & S

(Established 1314.) 25 Abchurch Lane, London, E.C. 4, England.