

The Daily Planet

S. STEPHENSON, PROPRIETOR.
TELEPHONES
Business Office 53. Editorial Room 102.

FRIDAY, JANUARY 11, 1907.

LAZARUS AT THE GATE.

Louis Leopold, formerly Louis Lazarus, late of the North Atlantic Trading Company, late associate of Mr. Preston at Charing Cross, late endorser of cheques of the so-called Aronson Company for alleged Government printing in London, late of the Farmer's Bureau and other associations accused of sending mechanics and artisans with false hopes to Canada, is now in this country. He tells the reporters that the Government has made a great mistake in cancelling the contract with the Trading Company. Mr. Leopold does not blame the Government. He knows that Opposition exposure forced the unwilling Minister to terminate a corrupt bargain, under which a group of unknown persons were taking \$100,000 a year for immigration services which were purely fictitious. The termination of this bargain seems to be a good thing for the country, for the department declares that the immigration has increased since the pay has been stopped. But it was bad for Louis Leopold and his associates, whether these latter are Canadian public men or not.

Brother Leopold says he knows who compose this North Atlantic Company but he will not tell.

The good people of Canada, who have paid \$500,000 to the contractors, have apparently no right to know who have carried off their gift and made no return for it. The secret is for the Prestons, Smarts, Littons, Leopolds and others who handled the money and were concerned in the deal. The duty of the Canadian taxpayer is not to know but to pay.

LITERARY

January Entertainments, as given in "What to Eat," are directions for novel entertainments for a Rag Fair, Robert Burns Anniversary, A January Wedding and A Sewing Party.

"Some Good and Economical Dishes," by Mary Foster Snider, contain some excellent recipes.

"Little Suppers for Winter Evenings" give some dainty seasonal menus which can be easily prepared. Answers to Queries is a department that will be found of great use to subscribers.

Subscription price \$1 per annum. The Pierce Publishing Co., Chicago, Publishers.

WHAT IT COSTS TO RUN AN AUTOMOBILE.

The prospective automobile purchaser must realize that even though he buys a runabout—the smallest type of motor, carrying the driver and one other passenger—he is not going to be able to keep the car in operation for \$5 or \$10 a month. It has often been said, and truly, that it is not the first cost of an automobile that counts so much as the maintenance expense. It may be possible for a man with a small car who motors modestly to get along with an expense of \$20 or \$30 a month if he has good luck and handles his car carefully and considerably, but the average cost of maintenance will be from \$50 to \$800, and even more a month. Here are some figures from bills I paid while the owner of a car of the runabout type with a single cylinder eight horsepower engine and convertible body carrying two or four passengers. These are my expenses for seven months, from April to November, when I covered nearly 10,000 miles. My bill for April follows:

April 1. Four hours' time on adjustments.....\$ 2.00
April 1. One gallon of cylinder oil..... 15.00
April 1. Two inner tubes..... 7.50
April 1. Extra fan belt..... 1.50
April 6. Repairing puncture..... 75
April 10. Rebuilding puncture..... 75
April 12. One auto jack..... 4.00
April 14. Four hours' time adjusting..... 2.00
April 18. Half gallon cylinder oil..... 38
April 21. Patching inner tube..... 75
April 23. Two hours' time adjusting..... 1.00
April 26. Extra spark plug..... 4.50
April 30. One month's storage..... 12.00
Gasoline for the month..... 10.00

Total.....\$55.25
My bill in May was \$67.22 and was made up chiefly of mechanics' time in making adjustments, as I was not then familiar enough with the car to do this work myself. From "The Automobile and the Average Man," by Harry B. Haines, in the American Monthly Review of Reviews for January.

Faulty Kidneys—Have you backache? Do you feel drowsy? Do your limbs feel heavy? Have you frequent headaches? Have you falling vision? Have you dizzy feeling? Are you depressed? Is your skin dry? Have you a tired feeling? Any of these signs prove kidney disease. Experience has proved that South American Kidney Cure never fails.

Sold by W. W. Turner.

As for life, it is a battle and a journeying in a strange land; but the fame that comes after is oblivion.

All pain must be to teach some good in the end.

TOWNSHIP COUNCIL

DOVER COUNCIL.

The Council met Dec. 15th, the members all being present. The minutes of the last meeting were read and adopted.

The Treasurer submitted the financial statement for the past year. Mr. Crawford reported on W. Ouellette's grievance.

Mr. Lewis reported on seeing Geo. Kime, re W. Campbell's grievance, and reported re P. Mayer's grievance.

A by-law was passed, appointing Gilbert Reaume commissioner on Dolson Creek Mechanical drain, also a by-law appointing Levi Tetrault commissioner on Cadotte Mechanical drain.

Mr. Lewis reported that the bid on the Backland drain was completed.

The Treasurer was instructed to pay the different School Sections their school rates for 1906.

The grievance of Fred Roe was referred to the Reeve and Mr. Crawford with power.

Shackleton's report on Hendrick South extension drain repair was adopted.

The grievance of Levi Tetrault was referred to Mr. Lewis with power. The grievance of O. Montgomery was referred to the Reeve with power.

Moved by Lewis and Bourdeau, that Mr. Crawford's report re W. Ouellette's grievance, be referred to the Reeve, to see the Solicitor on the matter and report.—Carried.

A large number of accounts were ordered to be paid.

The Council adjourned.

The Council met as a Court of Revision Hyatt Outlet and Branch drain, Dec. 27.

The members were all present. The appellants and parties appeared against, who were present, were heard in evidence, and the Court of Revision was adjourned till Jan. 9th, 1907, and the Council met.

The minutes of the last meeting were read and adopted.

The Hendrick South extension repair by-law was read and provisionally adopted.

The committee reported having settled the Town Line acct. with Chatham Township to date, and the Boyle drain acct. as per Engineer's report of Nov. 3rd, 1904.

The engineer reported on completion of the Hyatt Outlet drain and branch, and on the Robert drain, and Mr. Lewis, commissioner, reported that the work on these drains was finished to his satisfaction.

W. J. Foy, commissioner on Boyle drain, reported re same, and asked to be relieved from being commissioner on the drain.

The deficit charged to McKenzie drain ratepayers was ordered refunded, half to be charged to roads and bridges, and half to Div. 3.

Moved by Crawford and Lewis, that the ratepayers on the Hyatt drain, east of Bear Line, north of Con. 12, be refunded the cost of grading Bear Line road, half to be charged to roads and bridges, and half to Div. 4.—Carried.

Fred Lewis was paid \$12 for two sheep killed by dogs. The grievance of Oliver H. Owen was referred to Mr. Crawford with power. The grievance of J. C. Steen was referred to Mr. Lewis with power.

Moved by Crawford and Terry, that W. J. Foy be relieved from being commissioner on Boyle drain, and the Clerk prepare a by-law.—Carried.

The Council adjourned and met on Dec. 29. The members were all present. The minutes of the last meeting were read and adopted.

Mr. Lewis reported having sold the work for building a new bridge on Winter Line over Hind Outlet. The Reeve reported having settled Mrs. Ryan's claim re damage by earth from McKenzie drain for \$10. A by-law was finally passed relieving W. J. Foy from being commissioner on Boyle drain. J. Labute and W. Asher were refunded \$1 each, dog tax, having no dog.

There were a number of accounts ordered paid.

The Council adjourned.

J. WELSH, Clerk.

PILES CURED IN 6 TO 14 DAYS.

Pain Ointment is guaranteed to cure any case of Itching, Blind, Bleeding or Protruding Piles in 6 to 14 days, or money refunded. 50 cents.

VEGETABLE SPIRITS.

He appears to be full of animal spirits to-night.

Vegetable spirits, I should say. Either corn or rye.

G. T. R. DINING CAR SERVICE.

The general passenger department of the Grand Trunk Railway System are in receipt of a letter from a Chicago gentleman who travelled over the Grand Trunk recently, and who speaks in eulogistic terms of the service he found on the train, especially the dining car service. He says, "It was after about one hundred and twenty people had been served that I could secure a table for myself and a friend in the dining car. Our supper was as good as any as I have ever had on a railway. Our table was so situated that I could make a close observation of the general service, and we were surprised at what we saw. Dishes like sliced tomatoes, ice cream and other delicacies which so much depend upon the way in which they are served, were certainly never put on a table in a more dainty manner. The service was prompt, and everyone connected with it pleasant and agreeable, and I wish to congratulate you on the satisfactory way in which you take care of your patrons."

A woman rarely sees beauty in a woman as a man sees it.

Some women expect more attention than they really deserve.

Minard's Liniment cures Distemper.

IN FASHION'S REALM.

Stylish Suits For Girls—Handsome Checked Materials—Ultra Coats.

Coat suits for girls are extremely pretty in the two and three toned plaids shown this fall. The plaids are large, but the colorings are so soft and invisibly blended that the effect is quiet and rich. A charming suit, with plain tailored coat, is of large red and blue invisible plaid, very soft, very dark and very smart. A little dark red braid-trimming appears on the revers and cuffs.

Mixed cloth suitings are attractive this fall. One of these patterns is a dark green and blue check, with small embroidered dots of red and pale yellow silk sprinkled over the surface at intervals.

Many of the light fabrics for evening, such as voile, crepe and georgette.



PRINCESS GOWN IN PLAIDS.

In pale yellow, pink and white, have either a satin stripe or narrow satin check over them. Such a gown needs no trimming save a little good lace.

The ultra coat of this season is distinguished from last year's design by its collar and cuffs of contrasting material. Quite elegant is a pale tan colored coat, with a roll over collar of brown.

Wonderfully stunning is the plaid gown illustrated. It is made in princess style. Plain cloth trims the skirt, and makes the belt, sleeves, straps and buttons.

JUDIC CHOLLET.

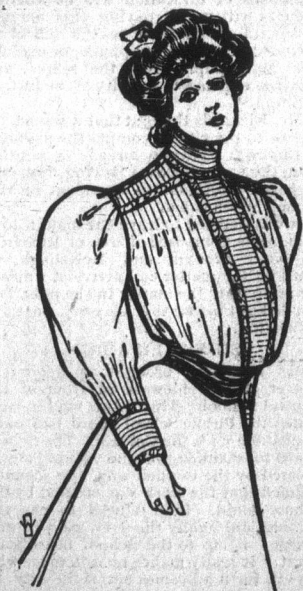
CHIC STYLES.

A Novel Waistband—The Season's Smart Colors—Empire Combs.

A Parisian novelty is a waistband of checked silk swathed in folds, with a fine cord piping at either edge. At the back is a large flat rosette.

Among the fashionable colors of the season are butter color, wood brown, hyacinth blue and pinesapple pink. A touch of black is seen on everything in the sartorial world.

The old fashioned empire comb has returned to favor. It is the stylish



A NEW EMBROIDERED MODEL.

caprice for women with blond or light brown tresses to wear these and their side combs in dark tortoise shell. These empire combs are worn in the hair close to the high knot.

Large hats are the shapes for dressy wear, while general utility chapeaux will be small.

Velvets will be worn extensively this winter, and they were never lovelier. In certain shades of blue, wine or sherry tones they are exquisite. Velveteen, with its beautiful chiffon finish, will also be much favored.

The blouse pictured is a full model that is suitable for silk or woolen materials. It is laid in pin tucks at the shoulders, and the band down the front is of the same kind of tucks. The trimming is of embroidery galon.

JUDIC CHOLLET.



YOU'RE COMING, AREN'T YOU?

PERHAPS you've been to this Sale already—if you have you'll come again! If you haven't ask your friends who have if you can afford to stay away?

It's a great, big, busy Sale—a Sale of generous economics and unbounded quantities. It's the sort of a Sale you'll enjoy visiting and regret to leave. It's a public benefactor, and the acme of underpriced merchandizing.

Words fail to do this event justice. To see is to believe, and, with half an eye, you would recognize this as a great saving time.

SILKS 39c. YARD.

Plaids, Checks, plain colors, etc., regular up to 75c a yard; Sale Price 39c.

DRESS GOODS AT 33c.

Tweeds, Mohairs, Serges, Lustres, Granites, etc.; regular up to 75c a yard; Sale Price 33c.

DRESS GOODS 39c.

Light shades in silk and wool, crepe de chene, cashmere, voiles, etc.; regular up to 90c a yard; Sale Price 39c.

FRENCH FLANNELS 36c. YARD.

Best grades, fine, pure wool French flannels; Dolines, Challies and fancy waistings, good range colors; regular 50c and 60c yard; Sale Price 36c.

\$1.25 TWEEDS 68c.

Fine, pure wool tweeds, home-spuns, French chevrons and Novelty Satings; 48 to 56 in. wide; regular 90c, \$1.00 and \$1.25 a yard; Sale Price 68c.

MILLINERY

At Half Price and Less. Your pick of 32 Handsome Trimmed Hats at exactly Half Price.

OUTING HATS 48c.

Your choice of 4 dozen Stylish Outing Hats, all shapes; regular up to \$2.00 each; Sale Price 48c.

GIRLS' TRIMMED FELT HATS

2 dozen Chic Styles in girls' trimmed hats; regular up to \$1.99 each; Sale Price 48c.

1.75 Moreen Underskirts 98c, fine quality cut, extra full, with deep flounces, ruffles, etc., colors navy, brown and green; regular 1.75 Sale Price 98c.

Ladies' Coats, all our 10.00 long coats Sale Price 7.48; all our 12.50 long coat, Sale Price 8.95.

11 only natty Tweed Coats, long backs regular 15.00 Sale Price 9.95. Stylish Tweed Coats worth up to 18.00 Sale Price 12.90.

LADIES AND GIRLS' COATS \$1.38 EACH.

Let odd lines in Ladies' Misses' and Girls' Coats, various styles, clearing at Sale Price \$1.38.

LADIES' \$5.00 SKIRTS \$3.48.

Lot Ladies' Stylish Tweed and Plain Black and Navy Cloth Skirts, all this season's styles; regular up to \$5.00 each; Sale Price \$3.48.

Ladies' Underwear, 6 dozen Ruman's natural wool vests and drawers, all sizes; regular 1.25 each, Sale Price 99c.

Ladies' Lamb Wool Vests and Drawers fine quality, in white only, regular 1.25 Sale Price 99c.

3 doz Infants' Vests, fine union quality natural color, long sleeves, regular 12 1-2c each Sale Price 9c.

Ladies' Flannelette Petticoats 39c, fine Saxony finish, colors, sky and pink, regular 50c each Sale Price 39c.

100 Black Satin Underskirts 69c, not many in this lot, regular 1.00 each Sale Price 69c.

\$1.25 Blankets \$1.05 pr., full, double bed size; soft, fleecy finish, heavy weight, grey or white, regular \$1.25 pair, Sale Price \$1.05.

\$1.50 Blankets \$1.25 pair, extra large and extra heavy, fine, soft, velvet finish, white or grey, regular \$1.50 a pair, Sale Price \$1.25.

\$3.25 Wool Blankets \$2.68 a pair, pure white unshrinkable wool blankets, full double bed size, regular \$3.25 pair, Sale Price \$2.68.

\$5.00 Blankets \$3.83, slightly soiled—extra fine, heavy, pure wool blankets large size, regular \$5.00 pair, Sale Price \$3.83.

LADIES' FUR COATS.

Here are some decided snags—4 only, Ladies' Astrakhan Coats; regular \$25.00; Sale Price \$18.90.

2 only, Russian Lamb Coats, satin lined; regular \$45.00; Sale Price \$28.90.

1 only, Grey Lamb Coat, choice curl, satin lined; regular \$50.00; Sale Price \$29.90.

1 only, Persian Lamb Coat, rich curl, satin lined; regular \$85.00; Sale Price \$49.90.

1 only, Electric Seal Coat, choice quality, satin lined; regular \$40.00; Sale Price \$28.90.

1 only, Near Seal Coat, satin lined, American Sable collar and revers; regular \$50.00; Sale Price \$39.90.

1 only, Persian Lamb Coat, rich full curl, heavy satin lined; regular \$100; Sale Price \$79.00.

1 only, No. 1 Persian Lamb Coat; regular \$125.00; Sale Price \$98.90.

Fur Neck Pieces, Ruffs, etc., at special Sale Prices.

The Northway Co., Limited

RAILWAYS.

GOING WEST
No. 1—6.25 a.m.
No. 2—11.15 p.m.
No. 3—1.15 p.m.
No. 4—4.45 p.m.
No. 5—1.15 a.m.
J. A. Richardson, Dist. Pass. Agent, Toronto
W. E. Rispin, Station Agent
W. E. Rispin, W. P. A., 115 King St., Chatham

GOING EAST
No. 6—11.15 a.m.
No. 7—1.15 p.m.
No. 8—4.45 p.m.
No. 9—1.15 a.m.
No. 10—4.45 p.m.
J. A. Richardson, Dist. Pass. Agent, Toronto
W. E. Rispin, Station Agent
W. E. Rispin, W. P. A., 115 King St., Chatham

General Change of Time on Oct. 14th

GRAND TRUNK WEST

12.30 a.m. for Windsor, Detroit and intermediate stations, except Sunday.
12.30 p.m. for Windsor and Detroit.
1.45 p.m. for Windsor, Detroit and intermediate stations.
2.00 p.m. for Detroit, Chicago and west.
2.15 p.m. for Windsor, Detroit and intermediate stations.
2.30 p.m. for Detroit, Chicago and west.
2.45 p.m. for Windsor, Detroit and intermediate stations.
3.00 p.m. for Detroit, Chicago and west.

GRAND TRUNK EAST

12.30 a.m. for London, Hamilton, Toronto and New York.
1.00 p.m. for London, Toronto, Montreal and New York.
1.15 p.m. for London, Hamilton, Toronto, Montreal and New York.
1.30 p.m. for London, Hamilton, Toronto, Montreal and New York.
1.45 p.m. for London, Hamilton, Toronto, Montreal and New York.
2.00 p.m. for London, Hamilton, Toronto, Montreal and New York.
2.15 p.m. for London, Hamilton, Toronto, Montreal and New York.
2.30 p.m. for London, Hamilton, Toronto, Montreal and New York.
2.45 p.m. for London, Hamilton, Toronto, Montreal and New York.

CHATHAM, WALLACEBURG AND LAKE ERIE RAILWAY.

Time Table No. 4. In effect Monday, Dec. 10, 1906.

CHATHAM WALLACEBURG
LEAVE ARRIVE
6.00 a.m. 6.05 a.m. 7.05 a.m. 7.00 a.m.
9.00 a.m. 9.05 a.m. 10.15 a.m. 10.10 a.m.
1.30 p.m. 1.35 p.m. 2.00 p.m. 1.55 p.m.
4.30 p.m. 4.35 p.m. 5.30 p.m. 5.25 p.m.
7.45 p.m. 7.50 p.m. 8.45 p.m. 8.40 p.m.
10.00 p.m. 10.05 p.m. 11.05 p.m. 11.00 p.m.

Extra cars on Saturday leave Chatham 1.30 p.m., 4.30 p.m. and 8.15 p.m. Leave Wallaceburg 2.00 a.m., 5.10 p.m. and 10.10 p.m.
*Except Sunday all other cars daily.

GRAND TRUNK RAILWAY SYSTEM

DIRECT CONNECTIONS AT LONDON FOR TORONTO, MONTREAL AND OTTAWA.

Leave Chatham 2.00 p.m., connect at Hamilton with Pullman sleeper for New York; cafe, parlor car to Buffalo.

Through sleeper leaves Chatham at 5.18 p.m. for Montreal. This train also connects at Toronto with Pullman sleeper for Ottawa, leaving at 10.15 daily.

For tickets and reservations call on W. E. RISPIN, C. P. A., 115 King St. J. C. PRITCHARD, Depot Agent.

CANADIAN PACIFIC

YOUR WINTER TRIP

Special winter tourist rates now in effect. Through tickets, without any troublesome exchanges, etc., on sale to

FLORIDA, MEXICO, CUBA, Anywhere South

Away below the snow line, far from fogs and thaws and other wintry ills.

Liberal stop-over privileges. Wide choice of routes. Return limit May 31st, 1907.

Call on E. Premlin, Opera House Block, for full information regarding these trips.

Excuses are generally not worth the trouble it takes to make them.

Outbursts of temper do not always reflect an ugly state of mind.



Only While They Last

Campbell's Removal Shoe Sale

75 Pair Men's Patent Colts in Button, Blucher and Bal Cuts, all sizes, regular \$3.50 and \$4.00 shoes now on sale for \$2.98

Bring your feet with you and get fitted. This is a snap for high grade foot wear buyers.

J. L. CAMPBELL

THE BOSTON SHOE STORE

Read The Chatham Planet For All The News