

A PINK NOTICE

A pink notice attached to this page shows that your renewal is due. We hope you have enjoyed The Guide and that you will send us \$1.50 for your renewal at once, using the blank coupon and the addressed envelope which will also be enclosed. We always give several weeks' notice so that subscribers will have plenty of time for forwarding their renewals and not miss any copies of The Guide. We cannot supply back copies of The Guide, so we hope you will not delay in sending your renewal. When requesting a change of address, please give us three weeks' notice. If the date of the address label on your Guide is not changed within a month after you send your renewal, please notify us at once. It is always safer to send your money by postal or express money orders. Mail your \$1.50 today.

THE GRAIN GROWERS' GUIDE
"Equal Rights to All and Special Privileges to None"
A Weekly Journal for Progressive Farmers

Published under the auspices and employed as the Official Organ of the Manitoba Grain Growers' Association, the Saskatchewan Grain Growers' Association and the United Farmers of Alberta.



The Guide is the only paper in Canada that is absolutely owned and controlled by the organized farmers—entirely independent, and not one dollar of political, capitalistic or special interest money is invested in it.

GEORGE F. CHIPMAN, Editor and Manager
Associate Editors: Ernest J. Trott and E. A. Weir
Home Editor: Francis Marion Beynon

Authorized by the Postmaster-General, Ottawa, Can., for transmission as second class mail matter.

VOL. IX. May 31 No. 22

SUBSCRIPTIONS AND ADVERTISING

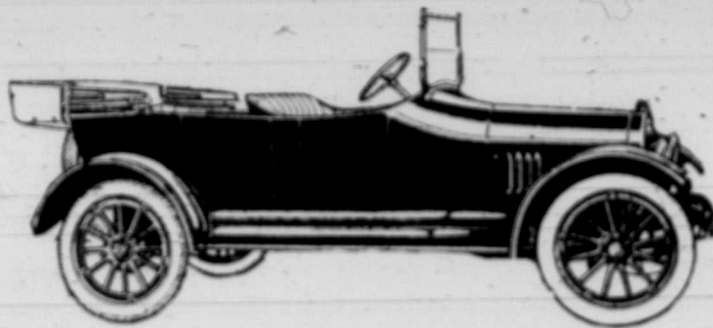
Published every Wednesday. Subscriptions in the British Empire \$1.50 per year. Foreign subscriptions \$2.00 per year. Single copies 5 cents.

Advertising Rates

Commercial Display—18 cents per square line.
 Livestock Display—14 cents per square line.
 Classified—4 cents per word per issue.

No discount for time or space on any class of advertising. All changes of copy and new matter must reach us seven days in advance of date of publication to ensure insertion. Reading matter advertisements are marked "Advertisement." No advertisement for patent medicines, liquor, mining stock, or extravagantly worded real estate will be accepted. We believe, thru careful enquiry, that every advertisement in The Guide is signed by trustworthy persons. We will take it as a favor if any of our readers will advise us promptly should they have reason to doubt the reliability of any person or firm who advertises in The Guide.

"The Car That Was Awaited"



Light in Weight—A Giant in Power

You cannot fail to admire the appearance or appreciate the comfort of the now famous Gray-Dort. But leave the roomy tonneau, so deep-cushioned in hair, and examine its vitals—the wonderful Planche motor.

Four cylinders, L-head type, cast en bloc with removable head—a motor with a long stroke of 5 inches—a real giant in power.

Though built for lightness, you will agree when you examine the Gray-Dort that its sturdy construction and the well-harnessed motor that here is a veritable colossus of boundless power—

struction and the well-harnessed motor that here is a veritable colossus of boundless power—

The Car That Glides Without Effort

Every feature, too, you will observe, which keeps the car running smoothly, sweetly, silently—perfect lubrication bearings, axle construction, and splendid three point spring suspension—the easiest running car of 1916.



These Specifications show its Completeness:

MOTOR—Four cylinders, cast en bloc, removable head. Bore 3 1/4 inches. Stroke 5 inches. "L" head type.

LUBRICATION—Constant circulating splash system.

COOLING—Thermo-siphon system. Water jackets are extremely large.

IGNITION—Battery type. Connecticut make.

CARBURETOR—One-inch improved type. Gravity feed. Capacious gasoline tank under cowl.

TRANSMISSION—Three-speed selective type.

REAR AXLE—Three-quarter floating type.

BRAKES—Internal expanding and external contracting.

WHEELS AND RIMS—Artillery type, with oval spokes. Demountable rims.

TIRES—30 x 3 1/2 inches. Non-skid rear.

SPRINGS—Front springs semi-elliptic. Rear springs full cantilever.

STEERING GEAR—Irreversible worm and nut type. Left-hand drive. 16 inch steering wheel.

BODIES—Designed along the most advanced lines in body construction. They carry out the stream line effect to perfection. Plenty of leg room in driving compartments.

WHEEL BASE—105 inches.

WEIGHT—2,100 pounds.

EQUIPMENT—Westinghouse electric generator, electric starter, lights and horn, one-man top, windshield, gasoline gauge, speedometer, rear tire carrier, and complete tool equipment.

\$850

F.o.b. Chatham

Manitoba Distributors:
Joseph Maw & Co.
 WINNIPEG

GRAY-DORT