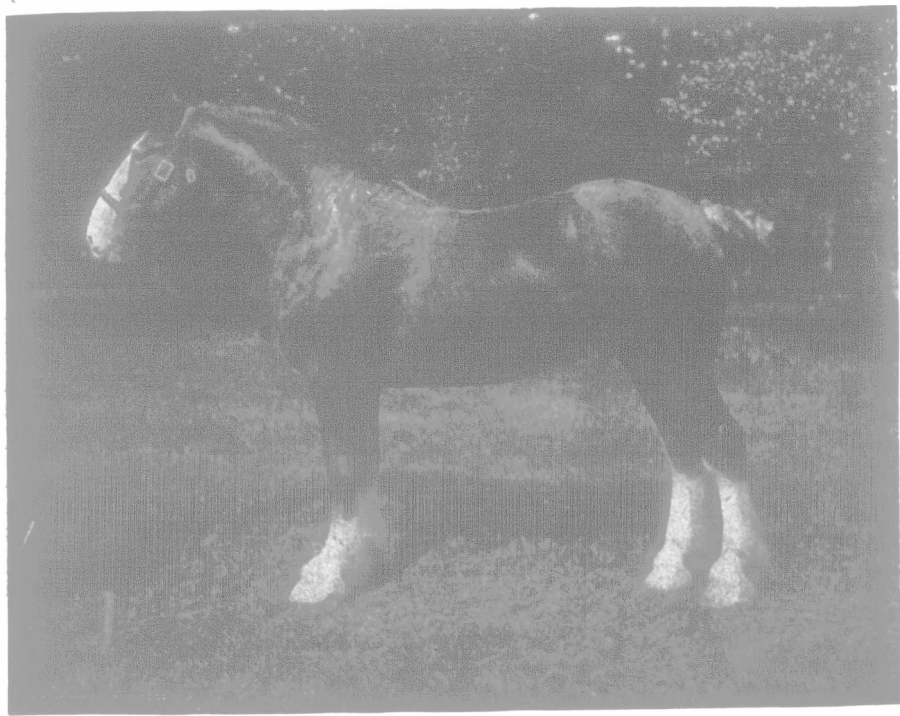


LAND CONTRACTS.

I shall be glad if you can tell me the law relating to the sale of sections of land by land corporations to farmers. We will suppose a case that a farmer purchases a section, the purchase price to be paid by six yearly annual instalments; he pays, we will say four instalments and erects considerable buildings and fences and otherwise improves the property, but when the fifth instalment comes due he finds it utterly impossible to meet it. Would the corporation be entitled to cancel his agreement taking over the farm with all its improvements and the four previous instalments.

Alta.
Ans.—If you will read your contract carefully you will see exactly the terms agreed to by you and in the absence of this we cannot advise you intelligently other than to say that unless it is specifically stated that the contract is void for non-payment, it will be necessary to issue a writ and get an order from the court to cancel the agreement, which if properly defended would probably not be granted without reference to the equity of the purchaser. We think, however, if you would write to the company for an extension of time, having paid so many instalments there would be no difficulty in having the time ex-

so thoroughly has he succeeded in solving the problem, that he does not see how it could be improved. To his mind the problem of incubation is simply a case of applying a mild and uniform heat to the eggs, and following closely the other conditions that are present in the natural method. All the hen does is to supply heat to the eggs by contact. In artificial incubation we cannot supply it successfully by contact; we must either do it by diffusion of hot air or by radiation of heat from hot-water-pipes. The latter, he believes, is the ideal way, providing leaks are guarded against. The hot water tank in the Peerless incubator is made of specially selected heavy copper, weighing fourteen ounces to the foot. The corners, and end joints are swaged together, soldered, and then reinforced with extra plates of copper, and the whole joint is then "loaded" with a sixteenth of an inch of solder. Every one of these joints are tested to stand twenty pounds of pressure. As the utmost pressure of hot water or water and steam that they could be subjected to in actual use is about four pounds to the square inch, the company are so thoroughly confident of their hot water tank that they guarantee it for ten years. The best of material is



CLYDESDALE STALLION BUTEMAN.

First at Toronto, and second at Chicago in the three-year-old section. Owned by Graham-Renfrew Co., Toronto.

tended. If action is taken to cancel the contract, see a solicitor at once with a view of defending it.

CAPPED HOCK

Have a three-year-old mare that has got a capped hock. Would you please give the best treatment for it and oblige,

Man.
Ans.—Absorbine and Kendall's Spavin Cure are advertised in this Journal as being specifics for enlargements.

Trade Notes

SELLING FURS SKINS AND PELTRIES.

We have much pleasure in directing readers attention to the advertisement of the Pierce Fur Co., Ltd., 229 Pacific Avenue, Winnipeg, appearing in this issue. To anyone having furs or skins to dispose of we would recommend this firm. They deal direct with the seller, have no travelling buyers on the road and are able to give the highest price for all furs sent in to them. They will send you a price list with shipping tags and full instructions re-packing and shipping, if you write for it. By all means do so if you have furs or peltries to sell. It will mean money to you. The address is Pierce Fur Co., Ltd., 229 Pacific Avenue, (Cor. King St.) Winnipeg.

THE PEERLESS INCUBATOR.

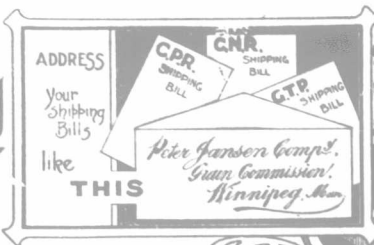
To the invention and perfection of the Peerless incubator, Mr. Lee has given the most exhaustive study, and

used in the construction of every part of the machine, and a special design of the hot-water tank insures uniform heat in all parts of the egg tray. The egg chamber is made of close-grained selected white pine, and finished with three heavy coats of special enamel. The brooders are also distinctive in several features, and, like the incubators made to uphold a reputation. The plant where the Peerless is manufactured is operated by electric power, generated by the Pembroke Electric Light Co's plant at Black River Falls, 12 miles distant. The capacity of the new plant will be 40 incubators a day, and no difficulty is anticipated in disposing of the output. Assuming that each of these machines will make three hatches per season, with an average of 100 chickens per hatch, it would mean 3,600,000 chicks per year endowed with the breath of life by twelve months' output of a single incubator factory.

The Lee-Hodgins Co., Limited, recently organized a Bureau of Advice, under the supervision of an expert poultryman, having wide experience both in England and Canada. The service of this Bureau of Advice is free to all, whether purchasers of Peerless incubators or not, and is thoroughly equipped to solve any problem that is submitted, and to put those interested on the right track to make a real success of poultry-raising.

The Company also issue a book, called "When Poultry Pays," containing a large amount of poultry information, and explaining the way to go into poultry farming without big capital. The company has kindly

When
Shipping
WHEAT



We are members
of the
GRAIN EXCHANGE

GRAIN CONSIGNED TO US ENSURES SPEEDY CASH RETURNS

PETER JANSEN COMPANY.
GRAIN COMMISSION WINNIPEG MAN.

Write for our book "Every Farmer's Form Filler," which we will send free if you state that you saw our Advertisement in the "Farmer's Advocate."

SHIP YOUR GRAIN through us

We will look after your GRADES

References any Bank
or Commercial Agency

The Canadian Elevator Co. Ltd.
WINNIPEG, MAN.

CONSIGN YOUR GRAIN TO

DONALD MORRISON & Co.

414 Grain Exchange, WINNIPEG, Man.

Grain Commission

Over 23 years' experience in Grain Commission business. Prompt reliable work at all times. Wheat, Oats, Barley, Flax.

KINGSTON

TORONTO

WINNIPEG

Jas. Richardson & Sons

GRAIN

Highest prices paid for all kinds of in carload lots. Special attention paid to low grade samples WHEAT, OATS, BARLEY FLAX. Write for shipping instructions and price circulars.

Randall, Gee & Mitchell

(Strictly a Commission Firm)

We have sold grain by sample for fifteen years, and know that we can give your shipments the care and expert attention they demand.

SURELY this is the year more than all others when your grain should be shipped to a good Commission firm to be sold by sample, rather than handled in the old way.

Try us with your next shipment.

Randall, Gee & Mitchell

202 Grain Exchange, Winnipeg

RAW FURS

We are going to make a specialty this season of Mink, Marten, Muskrat and Lynx, and want to handle them in large quantities, and to do this we expect to pay high prices for them. Give us a trial shipment. Write for our price lists. They are free. We buy all kinds of raw furs and hides and pay highest market price for same. LA CROSSE WOOL & FUR CO., Dept. 6, Exporters of Raw Furs, La Crosse, Wis.

When writing Advertisers mention the Farmer's Advocate