

Protect Your Furs
By Putting Them in
EATON'S Cold Storage
Full particulars, Fur Office, Third Floor,
Room Adelaide 5000, and ask for the
Women's Fur Department.

EATON'S DAILY STORE NEWS

"The Same Old, Dear O'ld Place"
One of the brightest and most ap-
pealing of the new songs, described
as a "ballad of home." In Keys to
suit all voices—priced 40 cts.

1869 **GOLDEN JUBILEE** 1919
Store Closes Saturdays at 1 p.m., Other Days 6 p.m.
"Shorter Hours" "Better Service"

The Last Bargain Day Before The Holiday

**Offers Splendid Savings on Shirts, Underwear,
Hats, Suits And Other Men's Wear**

**Note the \$25.00 and \$30.00 All Wool and Union Tweed Suits
---Today \$19.75**

It's the grand clean-up of the season of broken sizes, consequently there are not all sizes in any one pattern or style, but all sizes in the lot. Materials consist of all-wool and union tweeds and union or cotton and wool worsteds. In the waisted or waist seam coat, and the two or three-button, form-fitting sack styles. With soft roll peak and notch lapels, slash, crescent and regular flap body pockets, for men, and the two or three-button, single-breasted conservative styles. There's a host of checked and striped patterns, in grey, greenish grey, brown; also plain light and dark grey. Trousers have two side, two hip and a watch pocket. Sizes 34 to 44. Reg. \$25.00, \$27.50 and \$30.00. Today, \$19.75.

**Boys' EATON-Made First Longer Suits, Regularly \$19.00,
\$21.50 and \$23.50, Today \$16.25**

The material consists of union tweeds and cotton and wool worsted finished fabrics, in brown or medium and dark grey, neat checked and striped patterns. In the two-button, single-breasted, waisted, split coat; belter and plain form-fitting sack styles, with slash, patch and crescent no-flap pockets. There are not all sizes in any one pattern or style. Trousers have cuffs. Sizes 33 to 37. Regularly \$19.00, \$21.50, \$23.50. Today, \$16.25.

**Suits of All-Wool Blue or Black Serge at \$25.00 Top a List of Other Typical
EATON Clothing Values**

The Blue Serge Suits are cheviot-finished and won't readily gloss or shine. Those of black serge are smooth-finished, in the single-breasted, three-button conservative style. Not all sizes in both blue and black, but all sizes in the lot. Sizes 36 to 42. Clearing price, \$25.00.

**MEN'S ALL-WOOL BLUE SERGE SUITS,
\$35.00.**

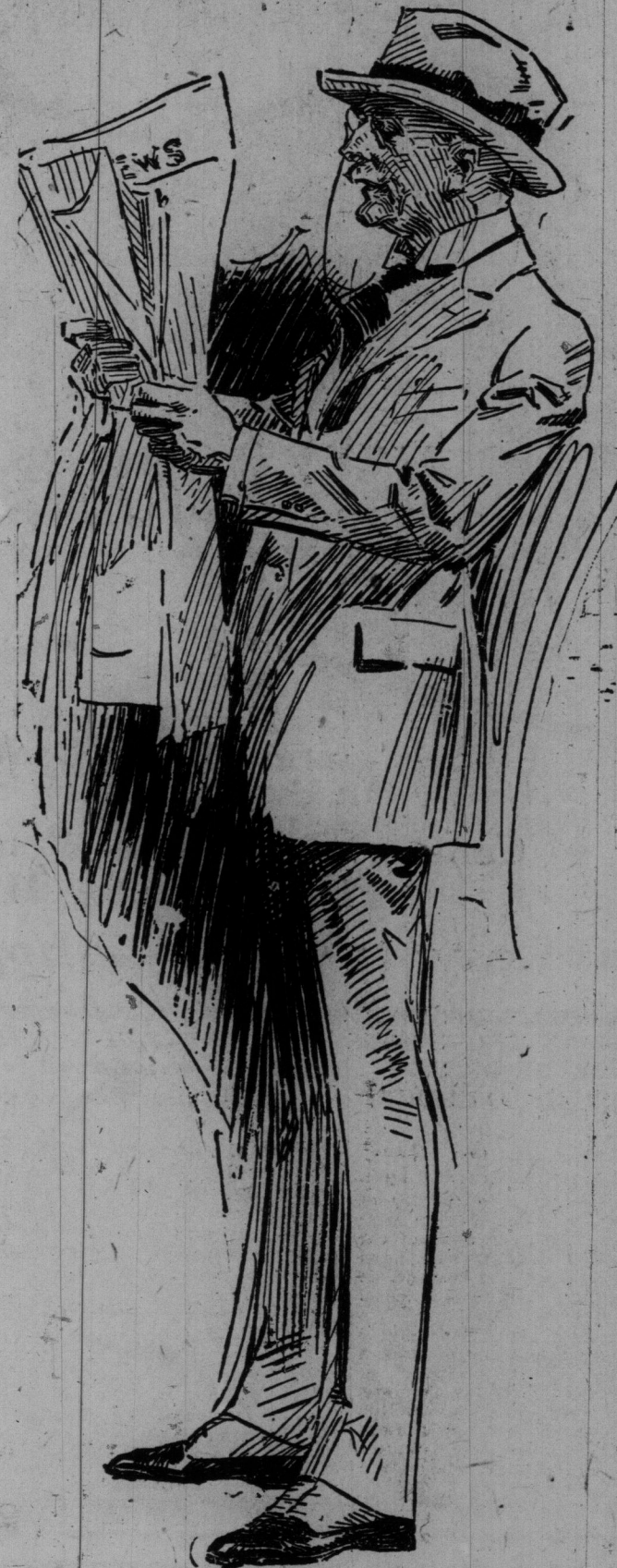
In the two or three-button, single-breasted, form-fitting models for the young men, and in the three-button conservative styles for men. The material is an all-wool soft finished serge. Trousers plain or with cuffs. Sizes 34 to 44. Price, \$35.00.

**QUARTER SILK-LINED SUITS FOR YOUNG
MEN, PRICE \$35.00.**

They're of all-wool and union tweeds and worsteds, in medium and dark greys, browns, heather mixtures and Lovat shades, broken checks, pencil stripes and fancy mixtures. Are in the two-button, single-breasted, form-fitting, waisted panel back and plain sac style, with high waist and deep vent. Trousers are straight cut and have cuffs. Sizes 34 to 38. Price, \$35.00.

At \$45.00 is the "Blackstone" model, a conservative three-button sac, with long soft roll notch lapels, natural shoulders and snug-fitting collars, of all-wool cassimere-finished tweed, in a dark fancy pin checked pattern, showing a blue thread stripe; also a smooth-finished union worsted in steel grey, with narrow threadline stripe. Sizes 36 to 44. Prices, \$42.50 and \$45.00.

The "Stevenson" is a model designed specially for the middle-aged man who desires a suit with smart lines. It is in the three-button, semi-form-fitting sac style, with natural shoulders, collar that fits close to neck, soft roll notch lapel. And of all-wool medium and dark grey worsted. Trousers have tunnel for belt, side, watch and two hip pockets (plain or with cuffs). Sizes 36 to 46. Price, \$50.00.



**Here's a Clearance of EATON-
Made \$13.50 Suits at \$11.25**

Smart Single-breasted All-around Belter Models

In medium and dark shades of grey wool and cotton mixed tweed, in the single-breasted, all-around belter model, with combination buckle and button fastener, slant pockets and box back with inverted pleat running down centre, full-fashioned bloomers, with belt loops, side, watch and hip pockets and strap and buckle fastener at knee. Sizes 29 to 34. Reg. \$13.50. Today, \$11.25.

Boys' All-wool, Full-fashioned Navy Blue Bloomers, with belt loops, side, watch and hip pockets, strap and buckle fastener at knee. Sizes 29 to 36. Regular \$5.00 and \$5.50. Today, \$3.75.

Boys' Knee-length Rompers of fancy striped percales, trimmed with red braid, have bib and strap over shoulder. Sizes 2 to 6 years. Today's price, 65c.



**Neglige Shirts, 98c ; Neckwear, 55c ; Sus-
penders, 47c ; Underwear, 98c,
and Other Savings**

Men's Neglige Shirts, a few are slightly counter-soiled. They are in coat style with laundered neckbands; some have soft double cuffs; others laundered cuffs; stripe patterns in single, double or cluster effects of blue, black or mauve on light grounds. Sizes 14 to 17. Regular \$1.15, \$1.25 and \$1.50. Today, 98c.

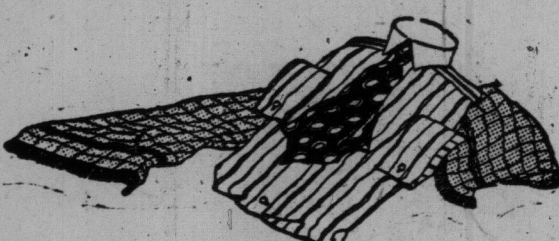
Outing Shirts of white duck, with pocket and reversible collar; others of print in stripes of blue, green, mauve and black on white grounds; also some sport style in plain white and cream, with collar to button close or to turn back. Coat style. Some in the lot are counter-soiled. Sizes 14 to 18. Regular \$1.25, \$1.35 and \$1.50. Today, each, 98c.

Men's Neckwear in four-in-hand styles, have wide flowing ends and thin, firmly-sewn neckbands; large range of patterns, including stripes, figured designs, scroll, leaf or all-over effects, in one, two or more colors combined. Shades of royal or navy blue, green, purple, grey or brown. Regular 75c and \$1.00. Today, each, 55c.

Suspenders of good quality lisle webbing, cross-back style, with brass metal trim and solid leather cast-off ends; also some of non-elastic webbing, with elastic ends to match. Thursday bargain, pair, 47c.

Men's Summer-weight Shirts and Drawers, a clean-up of mill ends. Every garment first quality. Spring needle or flat-knit, made of high-grade cotton yarns, in white, cream or light natural shades, long sleeve shirts and ankle length drawers. Sizes 34 to 44. Thursday bargain, garment, 98c.

Boys' Colored Neglige Shirts, some slightly soiled. Made with soft French cuffs, laundered neckbands and are in coat style. Neat stripe patterns of blue, black, mauve or green on white grounds. Sizes 12 to 14. Regular \$1.00, \$1.15 and \$1.25. Today, each, 79c.



May---The Children's Month

May Time Attractions in the Store

The Miniature Village—Main Floor—Store—And up in Toy-land, the Wonderful Little Show, Punch and Judy at the Circus, at 9.30 and 10.30 a.m., and 3 p.m.

The Wonderful Industrial Exposition

showing the blacksmith at work, the barber shop, and the carpenter. The housewife sweeping, and washing at the tub. Also the old organ grinder. Acrobats and tumblers are also shown—Main Floor—Furniture Building.

The Fluke O'Hara Trio—Violin, 'cello, and piano—will feature Fluke O'Hara songs in the Music Department, Fifth Floor, from 10.30 to 11.30 today and on Friday. Some of the popular songs are: "The Kind of a Girl I Mean," "There's a Charm of Ireland in Your Eyes," "My Little Irish Girl," and "Peggy McVey." Price, each, 25c.

**Men's Soft Fur Felt Hats \$3.15,
Boys' Tweed Hats \$1.29**

**Are the Feature Values From the Men's Hat Section,
James and Albert Streets**

The Soft Fur Felt Hats are in fedora crease-crown style, with welted, bound or raw edges. In shades of grey, green, fawn and black. All sizes from 6 3/4 to 7 1/2 in the lot, but not in each line. Today, each, \$3.15.

Boys' Tweed Hats, of wool and cotton or cotton and wool tweed mixtures, in rah-rah, dome crown, fedora, diamond crown or novelty shapes, with drooping flexible stitched brims. Have ribbon bands and well-tailored bow at side. Sizes 6 3/4 to 7 1/2. Reg. \$1.50 and \$2.00, for, each, \$1.29.

Men's and Boys' Caps, of cotton and wool mixed tweed, in the four or eight-piece styles, with or without band at back. In shades of grey, navy, brown or fancy mixtures. Sizes 6 3/4 to 7 1/2. Each, 49c.

