

FIGURE No. 203 W.—LADIES' BASQUE.  
FIGURE No. 203 W.—This illustrates a Ladies' basque. The pattern, which is No. 9094 and costs 30 cents, is in 9 sizes for ladies from 34 to 46 inches bust measure, and may be seen again on page 224 of this publication.

Mixed-brown wool goods and white cloth form

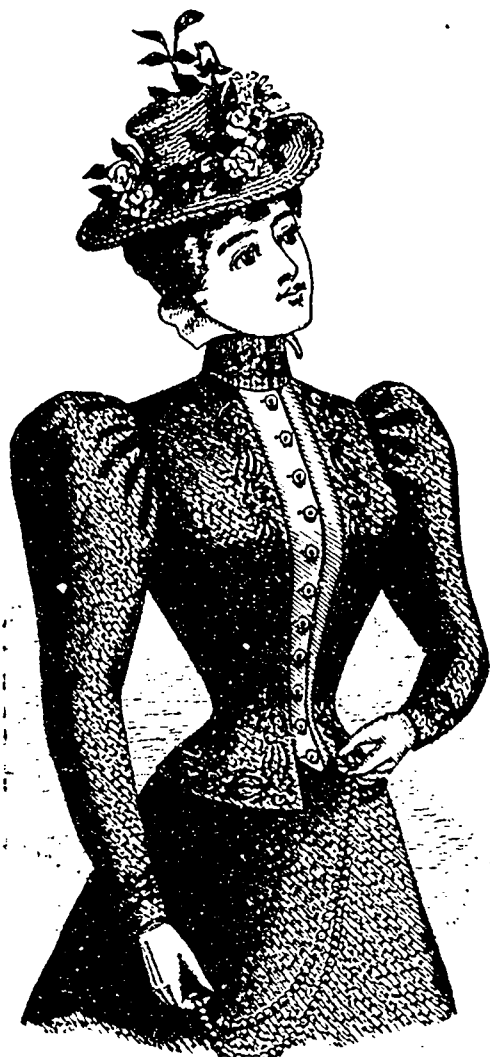


FIGURE No. 203 W.—This illustrates LADIES' BASQUE.—The pattern is No. 9094, price 30 cents.

the combination here illustrated in the basque. The adjustment renders the basque especially suitable for stout figures, two under-arm gores being introduced at each side. A vest that is pointed at its lower edge and a trifle shorter than the fronts gives opportunity for pretty contrasting effects; it is sewed underneath to the fronts along and above the first darts and is closed at the center with pearl buttons. Underfolded box-plaits at the side-back seams and coat-laps below the center seams give quite a coat-like effect to the basque at the back. A braiding design decorates the lower edge of the basque and the front edges of the fronts, and a decoration to match is seen at the the wrists of the one-seam sleeves, which have very little fullness at the top, and also on the collar, from which a box-plaited frill flares prettily at the back and sides.

The large straw hat shows a wrinkled band of silk about the crown and a profuse floral trimming.

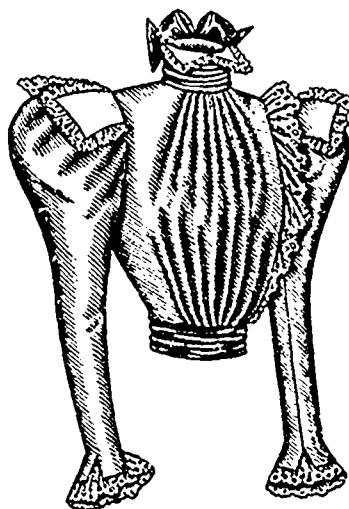
#### LADIES' RUSSIAN WAIST.

No. 9101.—At figure No. 197 W on page 227 this waist is again shown.

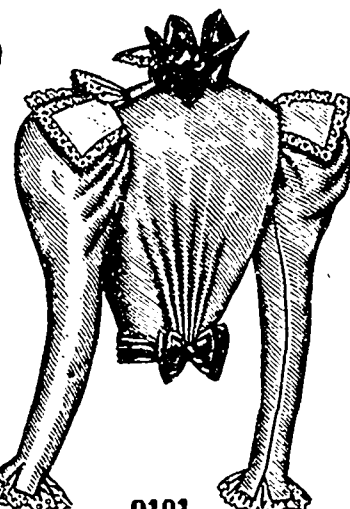
Zephyr gingham in a light-green tone was here used for the waist, which is closed in Russian style at the left side of the front. The waist is made over a well-fitted lining that is closed at the center of the front. The left front is narrow and smooth, and the right front has fullness at the center collected in gathers. The seamless

back has fullness below the shoulders collected in shirrings at the lower edge. A frill of lace trims the overlapping edge of the right front. The two-seam sleeves fit the arm closely nearly to the top; they are mounted on coat-shaped linings and may be plain or in tabs at the wrists, a frill of wide lace falling from beneath the tabs. A

this waist, in which silk and all-over lace are here united. The waist has a fitted lining closed at the center of the front, and on the upper part of the lining both back and front is arranged a pointed yoke that closes on the left shoulder. The lower edges of the yoke are overlapped by the back, which is smooth at



9101  
Front View.



9101  
Back View.

#### LADIES' RUSSIAN WAIST.

frill of narrower lace edges two large tabs that stand out over each sleeve and also two points which turn down from the top of the standing collar in front. The collar is encircled by a ribbon stock bowed at the back and ribbon drawn about the lower edge of the waist is formed in a loop-bow at the back.

This style will make up very pleasingly in all the Summer textiles, India and taffeta silk and wool canvases, as well as organdy, dimity and the like. Lace and ribbon will impart a dainty, summery touch.

Pattern No. 9101 is in 10 sizes for ladies from 30 to 42 inches bust measure. To make the waist for a lady of

the top and has fullness plaited to a point at the bottom and by full fronts that cross in surplice style, the fullness in the fronts being disposed in soft diagonal folds by gathers at the arm's-eye and front edges. The coat-shaped sleeves are made fanciful by short mushroom puffs over which flare caps that are each laid in three triple box-plaits. The wrists are prettily curved and trimmed with a frill of lace. A box-plaited frill of lace rises from the standing collar at the back and sides and a ribbon stock is formed in loop bows at the ends of the frill. The waist may be made up for evening wear with a low neck and short sleeves and without the sleeve caps, as shown in the small engraving.

When the waist is made with a high neck a combination will give the best results, but for



9062  
Front View.



9062  
Back View.

#### LADIES' WAIST. (TO BE MADE WITH A HIGH OR LOW NECK AND WITH FULL-LENGTH OR SHORT PUFF SLEEVES.)

medium size requires  $3\frac{7}{8}$  yards of material 22 inches wide. Price of pattern, 25 cents.

LADIES' WAIST (TO BE MADE WITH A HIGH OR LOW NECK AND WITH FULL-LENGTH OR SHORT PUFF SLEEVES.)

No. 9062.—There is a distinct charm about

evening wear quite as good an effect will be attained by making up any soft silk texture alone and finishing by a fluffy arrangement of lace.

Pattern No. 9062 is in 10 sizes for ladies from 30 to 42 inches bust measure. For a lady of medium size, the waist calls for  $5\frac{1}{2}$  yards of material 22 inches wide. Price of pattern, 25 cents.