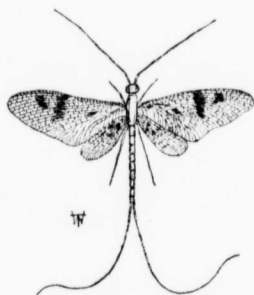


11785  
395642

The  
**Canadian Entomologist**

VOLUME XXXV.



*Ephemera simulans*, Walk.

EDITED BY

Rev. C. J. S. Bethune, M.A., D.C.L., F.R.S.C.

LONDON, ONTARIO.

---

EDITING COMMITTEE:

Dr. J. Fletcher and W. H. Harrington, Ottawa; H. H. Lyman,  
Montreal; J. D. Evans, Trenton; Prof.  
Lochhead, Guelph.

---

London, Ontario:  
The London Printing and Lithographing Company, Limited

1903.