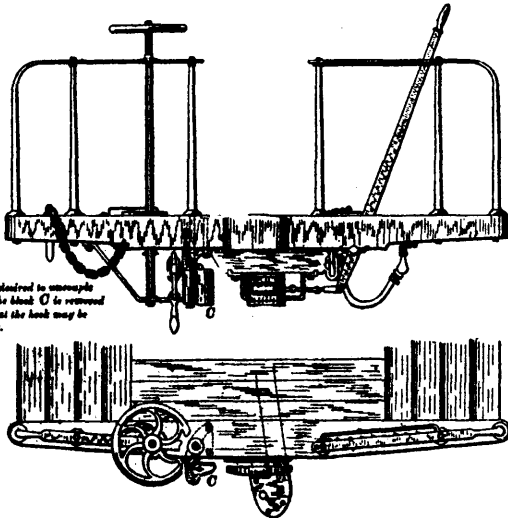
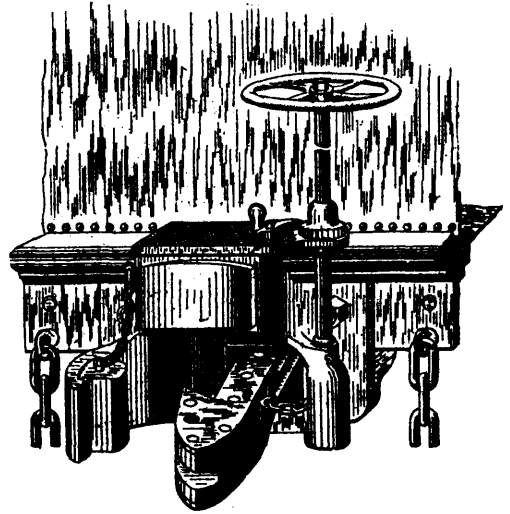


COLBY COUPLING.

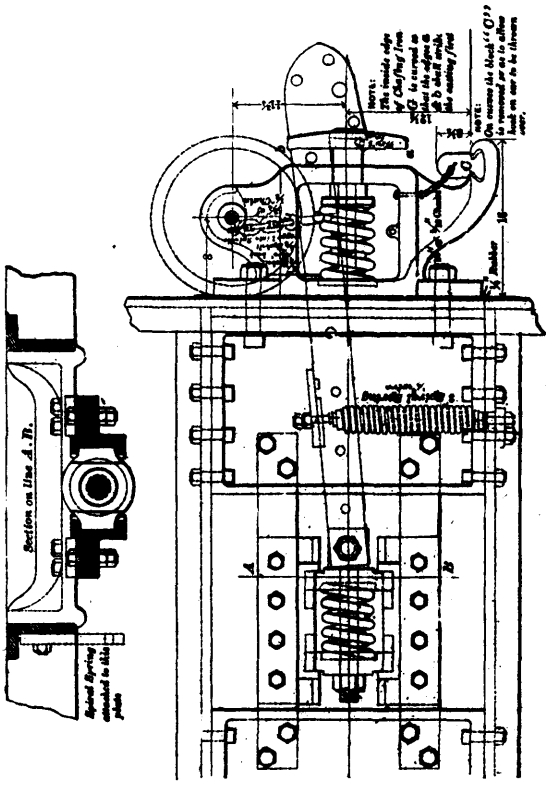
NOTE:
When it is desired to unscouple
on curves the block *O* is removed
in order that the hook may be
puffed over.



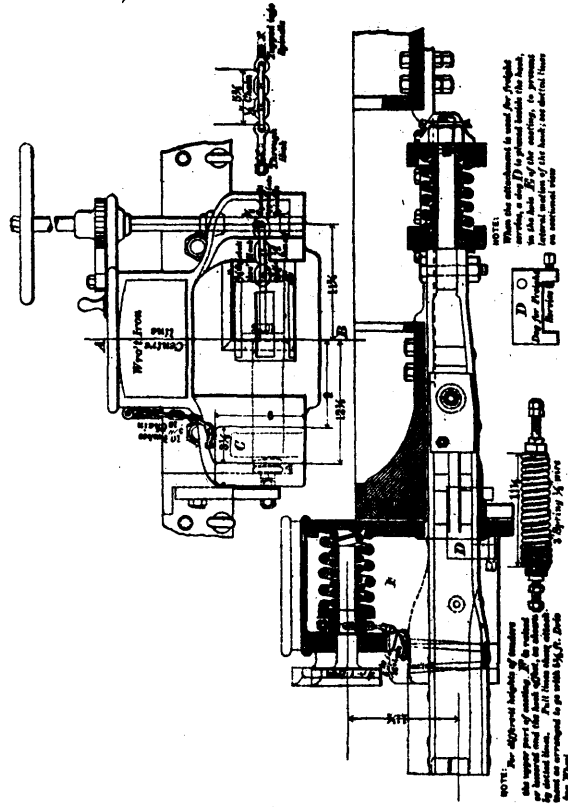
COLBY ADJUSTABLE GUIDE BLOCK FOR MILLER COUPLING.



COLBY COUPLING ATTACHMENT FOR LOCOMOTIVE TENDERS.



DETAILS OF COLBY COUPLING.



DETAILS OF COLBY COUPLING.

Section on line *d-d*.

Revised Spring
attached to *h*.

NOTE:
The inside edge
of *Clayton's* iron
is curved so
that it will
fit the
curving *flank*

NOTE:
When the block *O*
is removed
it is intended
to be thrown
back on over to be thrown

NOTE:
The attachment to use for freight
cars, a *dog* *D* is placed inside the hook,
in the back of the coupling, to prevent
the coupling from being pulled apart
on unlevel track.

NOTE:
The different heights of members
are marked and the back of the
coupling is marked with the
height of the back of the
coupling in feet and inches.
The height of the back of the
coupling is marked with
the height of the back of the
coupling in feet and inches.