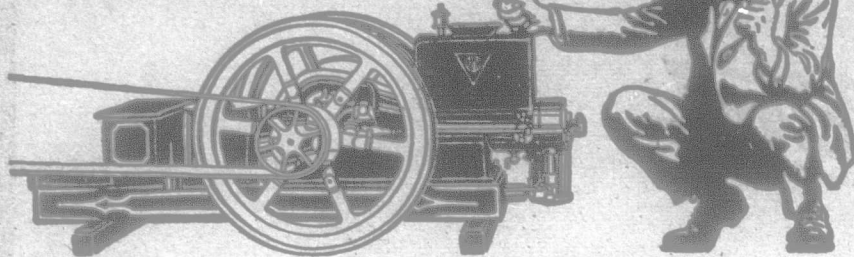


"I've seen a lot of engines but the ALPHA is in a class by itself"



THE more a man knows about gas engines the stronger is his recommendation of the Alpha. Users of the Alpha who have had lots of engine experience will tell you that the Alpha gives them the most power for the fuel consumed, is the least troublesome to keep in good working order, costs the least for repairs, and that they can always rely on it to give them plenty of steady power when needed.

The fact that the Alpha is not affected by cold weather is one of its good points that is especially appreciated by Canadian users. The speed and fuel consumption of the Alpha are accurately regulated to all loads by the quickest acting and most sensitive governor ever used on a gas engine. There is no waste of fuel and the engine runs steadily under all loads—light, heavy or varying.

The Alpha has no troublesome batteries. It starts and operates on a simple low speed magneto. The entire ignition system is remarkably simple and assures you of a hot, fat spark at all times. You can use either gasoline or kerosene for fuel.

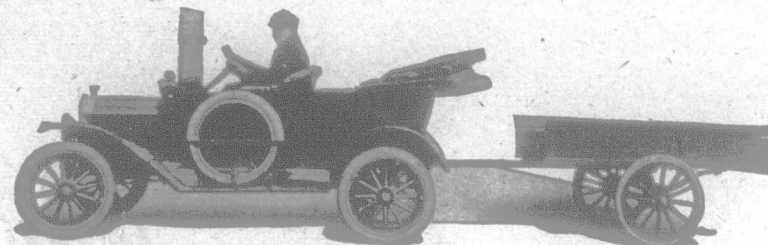
The strong recommendation the Alpha gets from its users is the result of features that you can readily appreciate when you see the engine or the illustrations and descriptions in our large catalogue. Send for a copy of this catalogue at once. Read it carefully and you will agree with Alpha users that this engine is in a class by itself, and gives you the most for your money.

Alpha Engines are made in eleven sizes—2 to 28 H.P. Each furnished in stationary, semi-portable, or portable style, with hopper or tank cooled cylinder.

DE LAVAL DAIRY SUPPLY CO., Ltd.

LARGEST MANUFACTURERS OF DAIRY SUPPLIES IN CANADA.
Sole distributors in Canada of the famous De Laval Cream Separators.
Manufacturers of Ideal Green Feed Silos. Catalogues of any of our lines mailed upon request.

MONTREAL PETERBORO WINNIPEG VANCOUVER



Make Your Car Work As Well As Play

You might as well get a double service from your car. Hitch a FOX Trailer to it, and you'll find it such a splendid utility that you, too, will catch some of the enthusiasm responsible for the demand in the United States for thousands of trailers in the last few months.

For the farmer, for the delivery man, for anyone with a hauling problem to solve, nothing so useful has been developed for years. The FOX Trailer can be attached to any make of automobile with absolutely no risk of injury to the car. Built in accordance with the best principles of automobile design. All-steel chassis; ball-bearing wheels, interchangeable with Ford wheels; solid Dunlop tires, guaranteed for 10,000 miles. Size of body 6 feet by 4 feet. Price \$85 f.o.b. Windsor. Send for descriptive catalogue.

Ask Your Local Automobile Dealer, or Write

Fox Brothers & Co., Limited

WINDSOR, ONTARIO

Dealers wanted in unreserved territory. Write or wire to-day for Dealer's proposition and territory reservation.



Aylmer Bronze Sprayer

You cannot afford to take any chances on the short-spraying season—the loss is too serious.

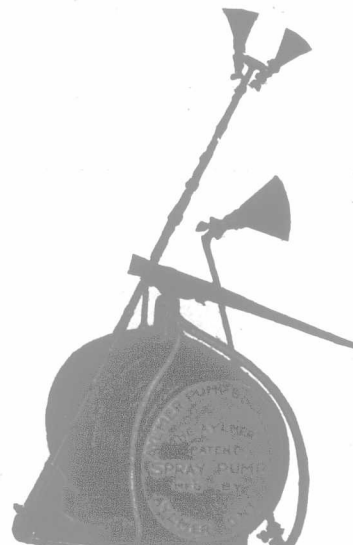
OUTFITS AND PRICES.

SPRAYER OUTFIT A—Being Pump only, with Mechanical Dash Agitator and Brass Agitator Cock, without Barrel. Price, \$14.00
SPRAYER OUTFIT D—Being Outfit A, Ten Feet Hose, with Couplings Attached, Two Friend Nozzles, One Brass Stopcock, One Y, One Long Iron Extension Rod, without Barrel. Price, \$20.00
Extra Hose, per foot, 16
For Lined Bamboo Extension Rod, in place of Iron Extension Rod add, 2.00
With Barrel, 4.00
SPRAYER OUTFIT F—Being Outfit A, Two Lines of Hose, Ten Feet each, with couplings Attached, Four Friend Nozzles, Two Brass Ys, Two Brass Stopcocks, and Two Eight-Foot Iron Extension Rods, without Barrel. Price, \$24.00
Extra Hose, per foot, 16
With Bamboo Extension Rods in place of Eight-Foot Iron. Price, \$28.00
With Barrel, 4.00
With Two Brass Triple Heads, Six Nozzles, instead of as in Outfit F—Add to list, \$2.50
The Aylmer makes child's play of Spray Day.

You take no chances—you get results. It is the sprayer you will buy sometime. Why not now?

(Used by Seven Governments)

The Aylmer Pump & Scale Co., Limited, Aylmer, Ontario



"Insurance money is just something for relatives to quarrel over," you say.

Perhaps it is. But all their quarrelling will do them no good. They can't defeat your wishes. You direct that the money be paid to whom you choose, and that settles it.

The proceeds of an Imperial policy can be paid in one sum at your death, or in monthly, quarterly, half-yearly or yearly payments.

And if you outlive your family's need for protection, the cash value of your policy can be used to provide comforts for your own old age.

Further particulars are given in our booklet, "The Creation of an Estate." Write for a copy today.

THE IMPERIAL LIFE Assurance Company of Canada

HEAD OFFICE - TORONTO

Branches and Agents in all important centres

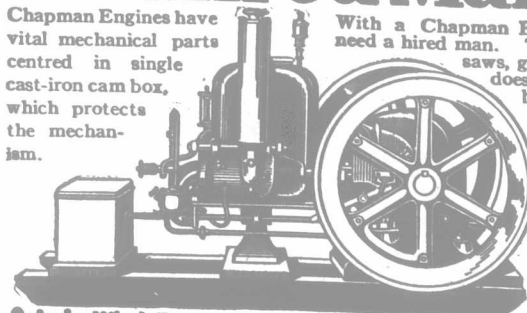
Copyright

The Hired Man with No Pay Day

Chapman Engines have vital mechanical parts centred in single cast-iron cam box, which protects the mechanism.

With a Chapman Engine, you don't need a hired man. This engine pumps, saws, grinds, cuts silage—does the hard laborious back-breaking labor around the house and barn. We sell the grinders, saws, pump jacks, etc., as well as the Engine.

Send to-day for our Engine Book—showing how to solve power problems on the farm.



Ontario Wind Engine & Pump Co. Ltd.,

Atlantic Ave., Toronto

Branches: Montreal, Winnipeg, Calgary, Regina