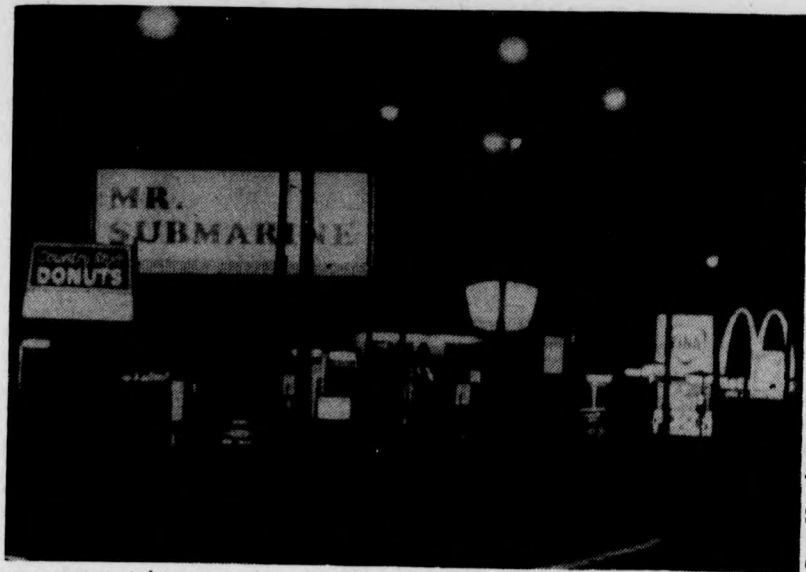


Downsview cuisine— not so haute

James A. Carlisle

Where do you go out to eat when the cafeteria food starts tasting like fried styrofoam? There is a strip of fast food outlets along Keele Street where you can get 'Big Macs' or submarines, but they're just bland. If you want food that tastes as if it has been cooked rather than processed and extruded, there are few places near York. I would, however, like to tell you about some of the restaurants which I have found. My current favorite is **Rosa's Place** at 4724 Jane Street near Shoreham. Go to Rosa's for pasta or veal. The spaghetti, cannelloni and gnocchi are excellent. Dinner for two with a carafe of house wine will cost about 15 to 20 dollars.

For the best bread in Downsview go to **Nino D'Aversa Bakery**, 1 Toro Road (1 block south of Finch at Keele) and stay for Capuccino and a hot sandwich for under 3 dollars. Nino's is a family place, a part of the Italian community. You can almost forget that you are in the wilds of Downsview. The best Pizza isn't found in an Italian restaurant at all. My vote goes to **Pietro's Pizza and Spaghetti Parlour**, 3725 Keele, owned by the people who bring us Campbell's soup. Pietro's pizzas



Gary Hershorn

are great (always order double cheese) but I can't recommend the other entrees. The Spaghetti is cheap, especially when they have weekly specials, but it tastes like it just came out of a can.

For a break from Italian culture I go to **Charlie C's** at 1111 Finch West between Keele and Dufferin. Charlie's specialties are Smoked meat sandwiches and Cabbage Rolls. He also boasts a seven-foot TV screen usually tuned to whatever sports are current, but there is also a quieter dining room.

The best pastries are found at **La Sem Patisserie and Pizzeria**,

1237 Finch Avenue West, but the most spectacular desserts are the ice cream sundaes at **Howard Johnson's**, 3757 Keele south of Finch.

Most of the restaurants near the campus are depressing places catering to the after-work crowd from the local factories. They concentrate on supplying beer and 'exotic dancers' rather than food, but there are a few good restaurants that still fit a student budget and more are opening up all the time. If you find somewhere special let me know through **Excalibur** and I'll pass the word along.

Help!

Excalibur, you may illogically deduce, is once again off and running, ready to expose administrative faux-pas, unearth steamy scandals and, in general titillate our readers with the goings on up here at York.

We need help. Anyone who likes to write, draw, photograph, or do layout is invited to drop in and join the staff. It's interesting, educational, and you can bask in the smiles of thousands on Thursday mornings.

There is a staff meeting today at 1:00.



the book barn

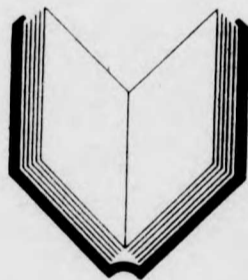
11 Church Street
(Below Front St.)

10 a.m. to 12 Midnight
Monday to Saturday
(Closed Sunday)

Every Book In Our Shop
Is Reduced
Up To 85% OFF Publisher's
Original List

An Invaluable Source For
Supplementary Reading
Material

Coffee Is Always
Complimentary



the book barn

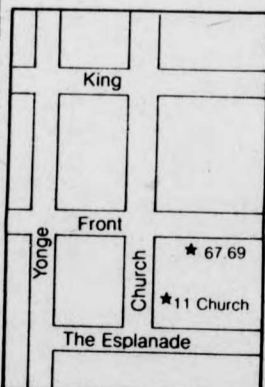
Retail Warehouse
67-69 Front St. E.
(2nd Floor)

Monday-Friday 9 am to 6 pm
(Closed Saturday)
Sunday - Noon Until 8 pm

ENDLESS TITLES
on all subjects such as

History, Science, Biographics,
Arts & Crafts, Art Books,
Fiction, Architecture, Theatre
and Fine Arts, Military,
Occult, Music, Photography,
etc., etc., etc.

Browsing Is Welcome



★ Canada's most consistently priced books

YOU

can make dollars as a Canada
Saving Bonds Sub-Agent



CALL JOHN PENN
**Merrill Lynch
Royal Securities
Limited**

361-3359

Exercise-Relaxation-Self Development

THE YORK YOGA CLUB

INSTRUCTION BY AXEL MOLEMA

Full-time professional 12 yrs' experience, including
U of T, Humber College & Seneca College. Member,
Fedn. of Ont. Yoga Teachers.

Vanier College, Room 202

Mondays, starting September 17, 1979

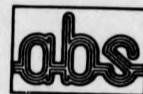
14 Lessons: \$25. Registration at 1st class.

Beginner: 7:15-8:15 p.m. Intermediate: 8:15-9:15 p.m.

Please wear loose attire & bring mat or blanket

Other courses available at
other times and locations

742-0878 • 884-2671 • 363-9160



AUDIO 'N' BUSINESS SYSTEMS Ltd.



**TEXAS INSTRUMENTS
INCORPORATED**

**SPECIAL
STUDENT DISCOUNT UP TO 20%
ON T.I. CALCULATORS**

Flemington Park Shopping Centre
Lower Mall Office

747 Don Mills Road, Suite 109

Don Mills, Ontario

Tel. 423-0653

Classified Ads

TYPING

Essays, Theses, Letters,
Manuscripts. Experienced
Typist. IBM Selectric. Jane—
Steeles area. From 70 cents per
page. Phone Carole 661-4040.

WANT ADS

Earn good commission selling
Canada Savings Bonds in your
spare time. Phone Ron Petrie,
Burns Fry Limited. 367-5640 or
368-9385.

SERVICES

THE COUNSELLING
AND
DEVELOPMENT CENTRE

welcomes you

Personel Counselling
Groups
Academic Skills
Self Management Group
Consultation

Room 145 Behavioural
Sciences Bldg.

667-2304

24-hour emergency serv-
ice through York Emerg-
ency Service

667-3333

But there's nothing hush hush about
the results you get with a classified ad
in name newspaper. Have our profes-
sional ad taker advise you and just sit
back and watch the results pour in.

**667-3800
EXCALIBUR**

Royal Trust

REALTOR
Royal Trust
THE SIGN
THAT SELLS

First in homes. First in service.

**Rainbow Dr., Woodbridge.
7 miles to York University**

61500 spacious 3 bedroom home
with attached garage backing on
ravine. Master bedroom has private
balcony. Fireplace in family room.
Pool and party room for complex.
Phyllis Lynas or Jean Tepperman —
635-1170.

**Just Listed! Shoreham Drive
Jane-Finch Area.**

Immaculate brick 4 bedroom home
with attached garage. Panelled
family room with fireplace and w/o
to patio. Two kitchens each
21' x 10' also cantina. Phyllis Lynas
— 635-1170

Why pay rent - Jane-Finch

43500 end unit brick townhouse
with underground parking. This unit
includes a mainfloor laundry and 4
appliances. Phyllis Lynas —
635-1170.

**Woodbridge. Minutes from
Metro.**

Truly exceptional! Traditional
exterior, contemporary interior.
Open concept, cathedral ceilings,
spacious living/dining room, fire-
place, walkout, backed by open
parkland. Call Mrs. Tepperman —
635-1170.

Royal Trust. Your first name in real estate.
Royal Trust Corporation of Canada. Realtor