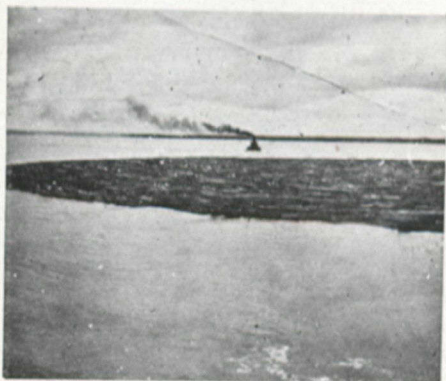


a trolley line wire is supported overhead in the middle of a street. The wire is thus kept free from contact with the brush on each side of the portage road. Any overhanging branches are trimmed off with a special tree trimmer which easily removes branches up to 2 inches in diameter. The main line is kept reasonably tight by being snubbed to a tree by a strain insulator once ever yhalf-mile. Sufficient slack is left in the wire to allow several trees to fall across it and bring the main line to the ground without breaking it or its supports. When the fallen tree is cut out the line springs up to its place. If the main line is not broken messages may be sent over it even if several trees are lying across the wire. Telephones are being installed at convenient points about ten miles apart.

LUMBERMEN ATTENTION!

Investigate our new patented towing and holding boom. Will save its cost many times over in preventing logs going adrift while being towed in open water, or for booming swift running rivers where logs are held.



Cut shows tug crossing Bay Chaleur with over 2,000,000 in tow. Distance 35 miles.

A. E. LOOSEN,
BATHURST, NEW BRUNSWICK



QUEEN'S

UNIVERSITY

KINGSTON,
ONTARIO

ARTS

Part of the Arts course may be covered by
correspondence.

MEDICINE

EDUCATION

APPLIED SCIENCE

Mining, Chemical, Civil,
Mechanical and Electrical
Engineering

SUMMER SCHOOL
July and August.

NAVIGATION SCHOOL
December to April

26 **GEO. Y. CHOWN, Registrar.**

FORESTER WANTED

for

NEW ZEALAND

A Chief Inspector of Forestry is required by the New Zealand Government. Salary £600 per annum, increasing to £700. Candidates should be graduates of a School of Forestry of recognized standing. Full particulars and forms of application obtainable from the High Commissioner for New Zealand, 415, Strand, London, by whom complete applications will be received up to the 20th January, 1920.