

# THE JAMES ROBERTSON CO. LTD. Manufacturers of.....

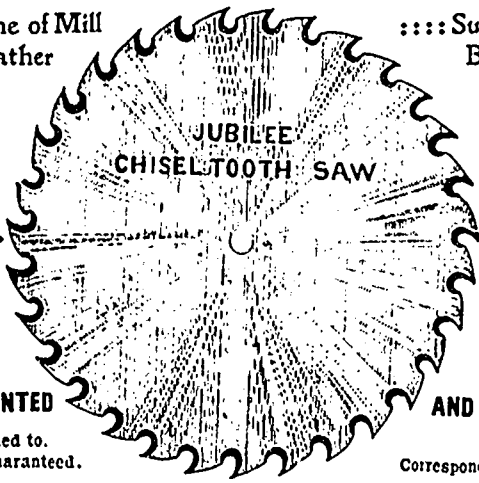
Saws of all Description

::::: A full line of Mill Rubber and Leather Metal, &c., always

::::: Supplies, including Belting, Babbit carried in stock.

Head Office: 144 William St. MONTREAL

Factories at Montreal, Toronto and St. John, N.B.



ALL OUR SAWS FULLY WARRANTED

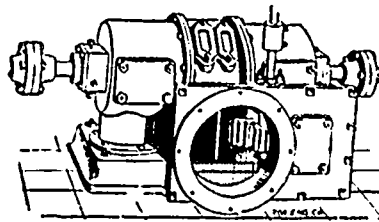
Orders promptly attended to. Satisfaction guaranteed.

CIRCULAR, GANG AND MILL SAWS A SPECIALTY

Correspondence Solicited.

# "Little Giant" Turbine.....

Vertical and Horizontal \* Built in 44 Sizes



Complete in its own case. No expensive flume required. Highest percentage of power guaranteed at full and partial gate opening. Machine Dressed Gearing, Shafting, Pulleys, Hangers, Etc.

WRITE FOR CATALOGUES AND GEAR LISTS

253 Little Giants sold to the Canadian Government.

J. C. WILSON & CO. GLENORA, ONT.

# WHY BAND SAWS BREAK

SIXTEEN REASONS, AND HOW TO AVOID THEM



Being instructions to filers on the care of large band saw blades used in the manufacture of lumber.

A book filled with valuable information on the care of band saws. Giving the reasons for breaking, analyzing each reason, giving instructions to dispense with the causes as laid down in each reason, and full details on filing and brazing. The proper styles of hammers to use are illustrated and described, and views of blades showing the blows of the different styles of hammer form an important part of the illustrations. Improper and unequal tension are then treated, and the manner of properly setting irregular teeth is described. In connection with the treatise is a history of the invention, manufacture and use of the saw from its origin to the present time. The work in whole makes an accumulation of information such as has never before been published.

The book is printed on fine paper, good clear type, and is handsomely and substantially bound in cloth. It will be sent to any address on receipt of the price, ONE DOLLAR.

Address - CANADA LUMBERMAN, Toronto, Ont.

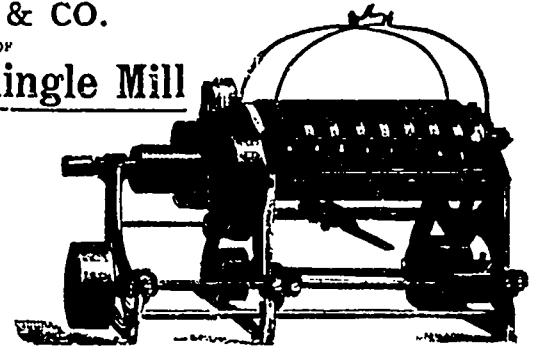
## P. PAYETTE & CO.

MANUFACTURERS OF

### Saw Mill and Shingle Mill

### Machinery . . .

Boilers and Boiler Fittings  
Shafting, Pulleys, Hangers  
Brass and Iron Castings  
Cant-Hook Handles, etc.



Write for Terms and Prices. PENETANGUISHENE, ONT.

## Galt Machine Knife Works



### MACHINE KNIVES

OF EVERY DESCRIPTION

FOR

### Woodworking Machines

... Send for Price List ...

PETER HAY - - - - - Galt, Ont.

Mention the CANADA LUMBERMAN when corresponding with advertisers.

## USE THE FAMOUS .. PINK LUMBERING TOOLS

Duck Bill Peavies, Round Bill Peavies, Finest Duck Bill Winter Cant Hooks



Cant Hook Handles | By Car Load or Dozen  
Peavy Handles  
Pike Poles, Skidding Tongs, Boom Chains

Lowest Prices

THOMAS PINK

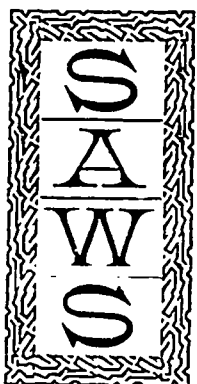
PEMBROKE, ONT.



# SHURLY & DIETRICH

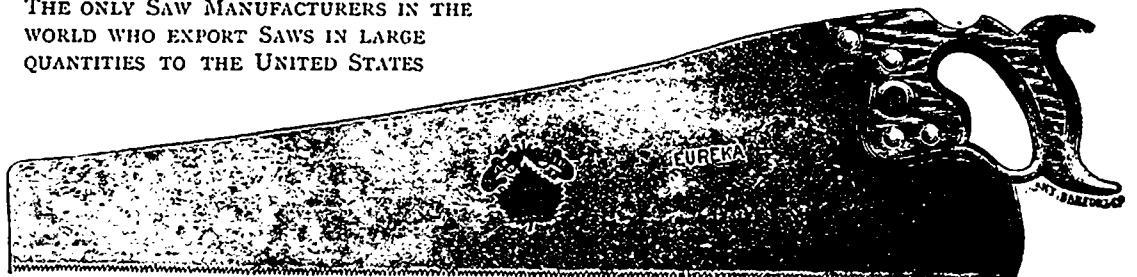


MANUFACTURERS OF



THE ONLY SAW MANUFACTURERS IN THE WORLD WHO EXPORT SAWS IN LARGE QUANTITIES TO THE UNITED STATES

GALT, ONT.



SOLE PROPRIETORS OF THE SECRET CHEMICAL PROCESS OF TEMPERING : : Our Silver Steel Saws are Unequaled