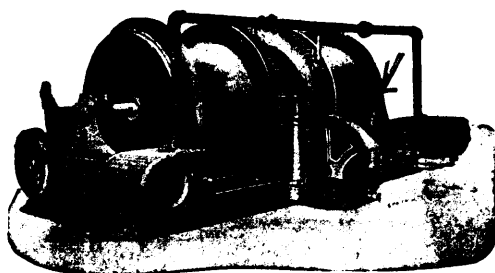
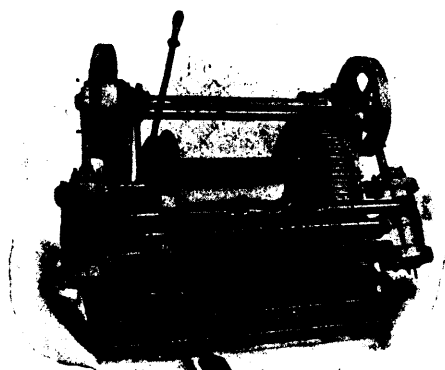


GENERAL MINING MACHINERY.

HOISTING  
CRUSHING  
AND  
Mining  
Machinery.



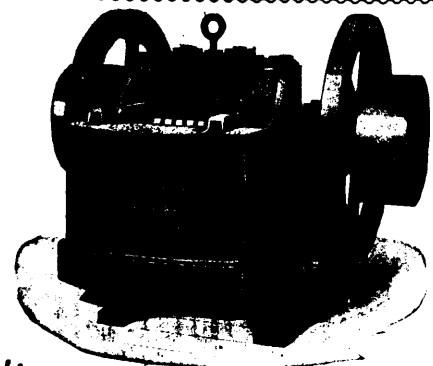
BACONS' Double Drum Winding Engines.



BACON'S Under-Ground Winze Hoist.

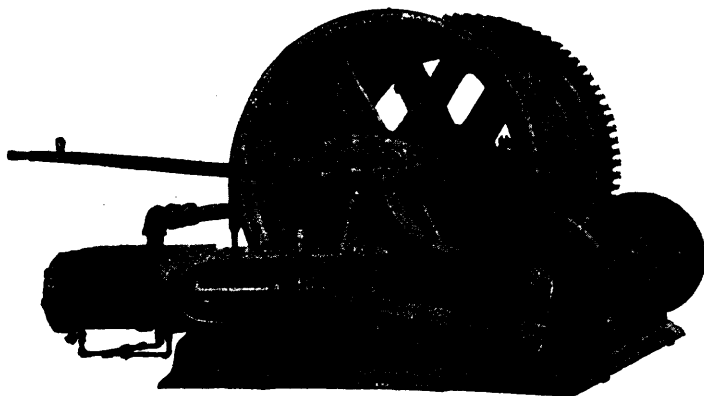
Earle C. Bacon, Engineer

Havemeyer Building NEW YORK.



"Farrel" Ore and Rock Crusher. Standard of the World.

Mine Cars.  
Engines.  
Boilers.  
Gravity  
Incline  
Machinery



Send for Completely Illustrated Catalogues.

BACON'S

DOUBLE CYLINDER Single Drum Winding Engines for Mine Shafts, Slopes, etc.

Link-Belt

ELEVATORS  
AND  
CONVEYORS.



Conveyor 328 feet centers, handling 4 tons "run of mine" coal per minute.



Steel Coal or Ash Cars.

ANY MATERIAL.  
ANY CAPACITY.

Electric Coal Mining and Haulage Machinery,  
Link-Belting, Sprocket Wheels, Malleable Iron Buckets,  
Shafting, Pulleys, Gearing, Clutches,  
Patent Machine-Moulded Rope Sheaves, etc.

THE LINK-BELT MACHINERY CO., Engineers, Founders, Machinists, Chicago, U.S.A.

WM. R. PERRIN & CO., CHICAGO, ILL., U.S.A.

MANUFACTURERS

Filter Presses

For Cyanide  
and  
Chloromatic Plants.

WRITE FOR CATALOGUE.

