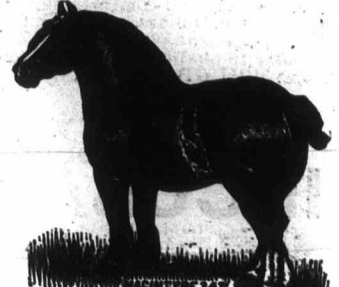


THE HOME OF THE WINNERS



Imported Clydesdales and Hackneys.



OUR SHOWING FOR 1890 WAS UNEQUALLED IN AMERICA,

beginning with Toronto Spring Stallion Show, where we won first in every class and sweepstakes for the best horse at the show. At Toronto Industrial we won seven firsts out of eight, including sweepstakes for best stallion, and also sweepstakes for best mare. At New York, first for aged stallion in his class, and champion cup for best draught horse, any breed, at the show. At local shows we were equally successful. A still better selection now on hand, both in breeding and merit.

GRAHAM BROS., (25 miles east of Toronto) **CLAREMONT.**
301-d-OM



SOLID GOLD FILLED.

35 Cts. for a \$2.00 Ring.
This ring is made of Two Heavy Plates of SOLID 18 KARAT GOLD, over composition metal, and is WARRANTED to wear and retain its color for years. A bona fide written guarantee is sent with each ring; also a blank which you can fill out and return with the ring any time you become dissatisfied and get all your money back. The regular price of this ring is \$2, and it cannot be sold from a \$10 ring. To introduce our watches and jewelry we will send the ring to any address, together with our Wholesale Catalogue and Special Terms to Agents, etc., on receipt of 25 cents in postage stamps. Such a ring was never advertised before. Order immediately; it is your last chance. (Send a slip of paper the size of your finger. Address, SEARS & CO., 113 Yonge St., Toronto, O. N.



WILSON'S WINTER PINE APPLE MUSK MELON, the greatest 19th Century. You can HAVE DELICIOUS MUSK MELONS ALL WINTER.

HENDERSON'S NEW BUSH LIMA BEAN.—Splendid Lima Beans raised without poles. **NEW MAMMOTH RED ITALIAN ONION.** Will grow Two-Pound Onions from Seed first year. **THE NEW EARLY IGNOTUM TOMATO.**—Largest, smoothest, and best tomato in the world. **WILSON'S IMPROVED SUE HEAD CABBAGE.**—Best winter cabbage. Always heads, never fails to head.

Wilson's Seed and Plant Catalogue and Live Stock Annual

116 pages, 200 engravings, handsome colored plates, full of useful information. Most reliable Catalogue published. Garden, Flower, and Field Seeds. New Potatoes, Plants, Trees, Hoses, Choice Land and Water Fowls, &c., &c., &c. **ALL THE ABOVE SENT FOR 25 CENTS,** stamps or money. Address

SAMUEL WILSON, MECHANICSVILLE, PA.

MANITOBA THE GREAT GRAIN AND CATTLE PROVINCE

—HAS WITHIN ITS BORDERS—

HOMES FOR ALL!

Industrious men and women. Manitoba is making rapid progress, as shown by the fact that

In 1887 there were under crop,	683,764—acres.
" 1890 " " "	1,082,792 " "
Increase,	419,028

These figures are more eloquent than words, and indicate clearly the wonderful development taking place. NOT A BOOM, but certain and healthy growth

HORSES, CATTLE AND SHEEP

Thrive wonderfully on the nutritious grasses of the prairie, and, in fact, MIXED FARMING is now extensively engaged in all over the Province. There are still

FREE HOMESTEADS in some parts of Manitoba.

CHEAP RAILROAD LANDS—\$3.00 to \$10.00 per acre. Ten years given to pay for them.

IMPROVED FARMS, from private individuals, at low prices, and on easy terms of payment.

NOW IS THE TIME to obtain a home in this wonderful fertile Province. Population is moving in, and land is annually increasing in value. In nearly every part of Manitoba there are now

GOOD MARKETS, RAILROADS, CHURCHES & SCHOOLS,

AND MOST OF THE COMFORTS OF AN OLD SETTLED COUNTRY.

Investment of Capital. There are very good openings in many parts for the investment of capital in manufactories and other commercial enterprises.

For the latest information, new books, maps, etc., (all free) write to

Or to

A. J. McMILLAN,
Manitoba Government Office, 30 York St., TORONTO.

HON. THOS. GREENWAY,

Minister of Agriculture and Immigration,
WINNIPEG, MANITOBA.

297-tt-O

PRAIRIE FARMS OF MANITOBA.

We have an exceptional list of choice land for sale in the best farming districts of the Province and around Winnipeg, also a few improved farms. Local Representatives throughout the country. Every facility given for viewing lands. Descriptive Catalogue with prices and map of Manitoba free. Land bought and sold on commission. Owners of property, for sale, are invited to communicate with us. **MONEY TO LEND TO SETTLERS AND FARMERS,** to Purchase Stock, Pay for Land, etc., at lowest rates of interest.

OSLER, HAMMOND & NANTON,

LAND OFFICE, 381 Main Street, WINNIPEG.

MANAGERS—North of Scotland Canadian Mortgage Co. (Ltd.) AGENTS—Ontario and Qu'Appelle Land Co. (Ltd.) LAND DEPARTMENT—The Qu'Appelle, Long Lake and Sask. R. & S. S. Co., Calgary and Edmonton Railway.

297-y-OM