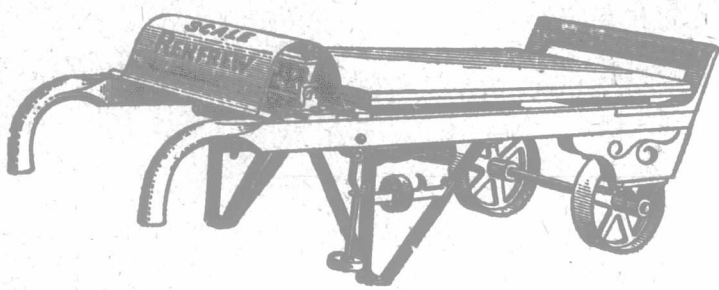
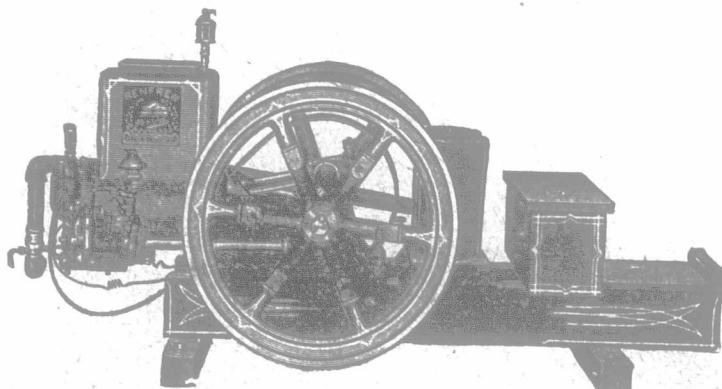


## Renfrew Standard — 3 Winners

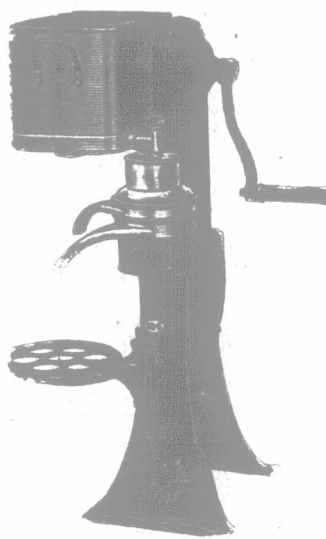
Here is an engine that starts without cranking in all kinds of weather—that has a fly ball governor just like a steam engine—that has the most economical carburetor built. We have the proofs right from farmers to substantiate its gasoline economy. This engine also requires but little water for cooling, and is so easy to manage a young boy can run it. All styles and sizes from 2½ to 60 h.-p. Also the little Renfrew of 1½ h.-p. Write for gasoline engine catalogue.



Some farmers may think they can get along without a good scale. So they can. But they are losing more than enough to pay for one in a very short time. Our scale booklet tells why. It also describes in detail the Renfrew Handy Two-wheel Truck Scale, which will weigh anything from 1 lb. to 2,000 lbs., regardless of size. Write for copy.

The 1915 Model Standard marks the latest radical advance in cream separator construction. The one frame now accommodates all sizes of balls. In future, instead of buying an entire new machine when you require a larger size, all you need to do is to exchange for larger size bowl and fittings. Another advantage of this interchangeable capacity feature is that the frame and working parts are strong, rugged and powerful

enough to drive a 1,000 lbs. bowl—the largest size. Think of the tremendous margin of safety this means on the sizes from 350 to 800 lbs. Also bear in mind that every Standard has sufficient overcapacity to skim from 100 to 300 lbs. an hour faster than rated capacity and still do the work equally as well as other separators. There are other new features, too. Get our separator catalogue, which gives full particulars.

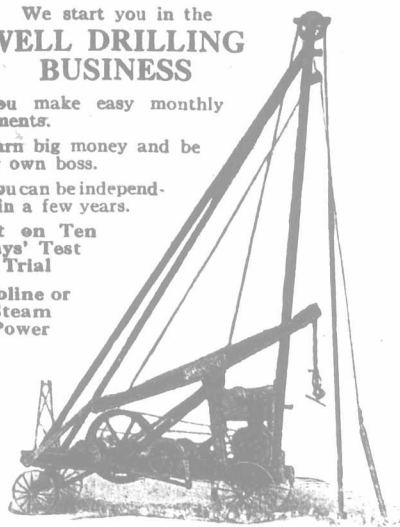


**The Renfrew Machinery Co., Ltd., Renfrew, Ont.**

Agencies Almost Everywhere in Canada.

### We start you in the WELL DRILLING BUSINESS

You make easy monthly payments. Earn big money and be your own boss. You can be independent in a few years. Sent on Ten Days' Test Trial. Gasoline or Steam Power.



Write at once for illustrated catalogue and specifications.

THE STAR DRILLING MACHINE COMPANY  
478 Washington Street, Akron, Ohio

### Bissell Steel Stone Boat

Stiff and strong with steel railing around the edges and steel runners underneath. 7 feet long by 2 2½ or 3 feet wide. Reveal corners. A useful Farm Implement. Write for folder and prices.

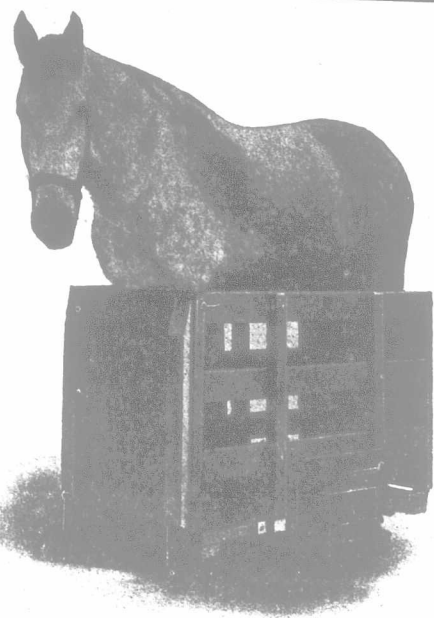
T. E. BISSELL CO., LIMITED, Elora, Ont.



Build Silos, Dwellings, or any class of building from Concrete Block. The London Adjustable Concrete Block Machine makes every kind and size of Block. High grade. Moderate price. We manufacture a full line of Concrete Machinery. Tell us your requirements.

LONDON CONCRETE MACHINERY CO.,  
100 St. Paul Street, London, Ontario.

Please mention "The Farmer's Advocate."



"Grey Dan," weight 1,612 lbs., being weighed on an

### Aylmer Three-Wheel Wagon Stock Scale

CAPACITY 2,000 LBS.

Delivered at any Railway Station in Ontario, complete with rack.

\$35.00

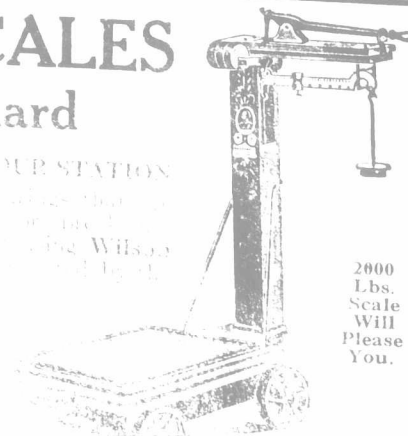
Government Certificate accompanies each scale. Scale shipped same day as money received.

THE AYLMER PUMP AND SCALE COMPANY, LIMITED,  
Aylmer, Ontario.

## WILSON'S SCALES Are the Standard

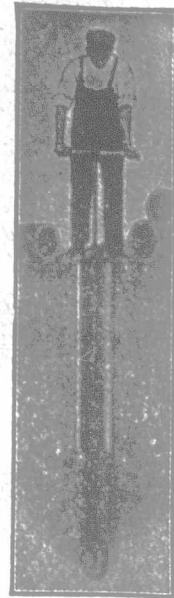
WILSON PAYS THE FREIGHT TO YOUR STATION. Wilson scales have 16 diamond steel blades that are guaranteed for 20 years against wear. The Great Trunk Railway, the Government, the Government, Our No. 66 is our leader. You will find it better value for money.

C. WILSON & SONS  
39 Espinosa Street  
TORONTO, ONT.



2000 Lbs. Scale Will Please You.

### You Can Dig 40-foot Wells Quickly Through Any Soil With Our Outfit At \$12.00



Write us to-day, and learn how you can start a profitable business, digging wells for others, on an investment of but \$12.00. Works faster and simpler than any other method. 100-foot outfits at \$25.00.

Write us for full information.

Canadian Warren Axe & Tool Co. Limited  
15 Carlton St., St. Catharines, Ontario

### GOES LIKE SIXTY SELLS LIKE SIXTY

#### GILSON ENGINES

are made in all sizes for all purposes, priced from \$45.00 upwards. They have exclusive patented service features, not found in any other engine—fully described in our catalogue, sent free.

"Goes Like Sixty" Engines, are made for, and purchased by men of superior judgment and discrimination. They know that Gilson Engines are greater value because they have service features that cannot be secured elsewhere.

If you need an engine, and do not buy one, you are paying for it anyway. When you get a Gilson Engine, in reality you do not pay for it—it pays for itself. Do not buy an engine until you have investigated further. Send for catalogue.

Gilson Manufacturing Co., Ltd.  
2909 York Street, Guelph, Ontario

# R.M.S.P.

FORNIGHTLY SAILINGS

— BY —

TWIN-SCREW MAIL STEAMERS

FROM

St. John (N.B.)

AND

Halifax (N.S.)

SPECIAL FACILITIES FOR TOURISTS

For Illustrated Folders, Rates, etc., apply to the Agents of The Royal Mail Steam Packet Company; or in HALIFAX (N.S.) to PICKFORD & BLACK, Ltd.

### LEARN TO BE A CHAUFFEUR

Good Jobs are easily obtained by competent men. Our diploma qualifies you for Government chauffeur's license examinations. Our course embodies the actual repairing of all makes of automobiles and driving through the trafficked thoroughfares of a large city. The lectures are simple, yet thorough and instructive. Special course for owners and prospective owners. Special facilities for lady students. Write to-day for free booklet.

Edward W. Cameron, Principal  
TORONTO AUTOMOBILE SCHOOL  
Successors to Y. M. C. A. Automobile School  
85-87 Wellington St., W. Toronto, Ont.