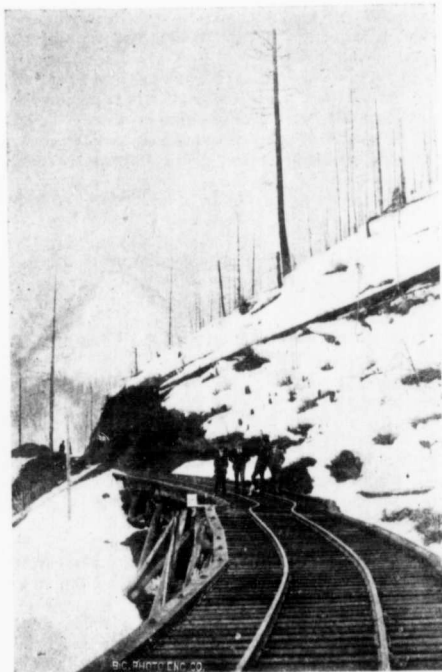


to connect with the No. 8 tunnel. It is expected that ore will be encountered when the break which has cut out the ore above has been passed through. The company have purchased the old Lanark mill, which has been removed to Sandon, and is in course of erection at the terminal of the tramway on the K. & S. It is believed

is a double-track tunnel, and is one of the best and largest tunnels in the Slocan. A force of about 60 men is employed and shipments are being made at the rate of two cars of ore per week. A quantity of ore has lately been discovered in the old upper workings, which were supposed to be stoped out. Air for the tunnel



PAYNE BLUFF ON K. & S. RAILWAY, 1,000 FEET BELOW.



BRIDGE ON K. & S. RAILWAY, AFTER A SNOWSLIDE.

that good results will be obtained from the milling of the dumps. In No. 5 a compressor plant for hoisting and drilling, operated by a gasoline engine, has been installed.

*Last Chance.*—The long crosscut tunnel, which is being driven to cut the Galena vein, is now in over 2,000 feet and expected to strike the ledge daily. This

operations is supplied by the compressors at the Noble Five mill at Cody.

*Ruth.*—Since last February practically nothing has been done on this property, a few men only being employed only in development work. The mill has not been operated since then. The lowest level is being driven ahead and in the spring the mine will be in a



SLOCAN LAKE AND S.S. "SLOCAN."