

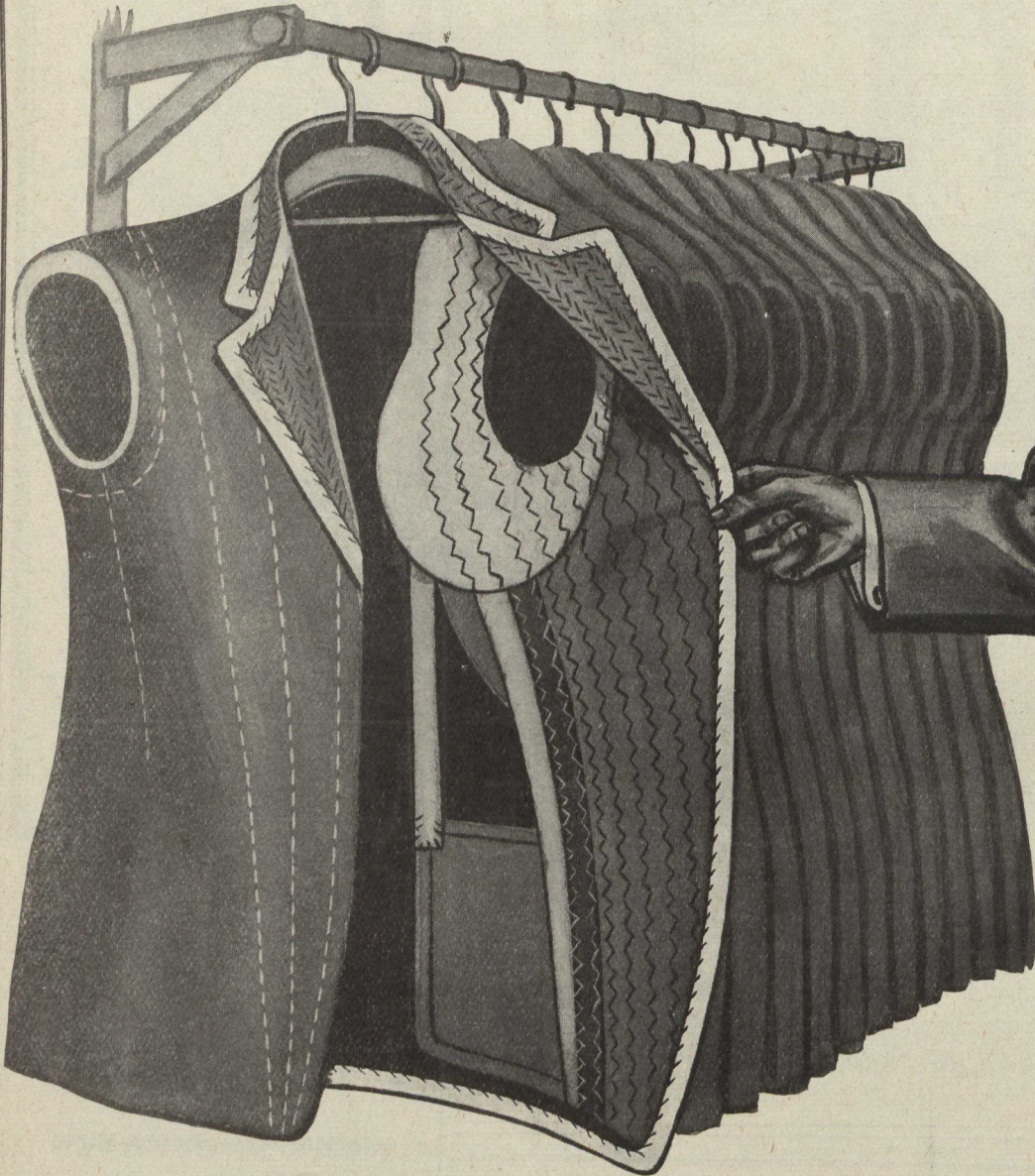
DO YOU LIKE TO APPEAR WELL DRESSED?

BUY ONE of THOSE HIGH-GRADE SUITS

BLACK and BLUE and
COLORED FABRICS



THE FIT
WILL PLEASE YOU



THE SEASON'S NEWEST STYLES AND LATEST PATTERNS

In **EATON** Brand clothing the lapels and collar are interlined with linen canvas and the collar is padded giving perfect shape, you will notice the lapels of the coats have a smooth, even, dressy effect that is entirely wanting in most clothing. The pockets are hung from the shoulders. Over the shoulder and around under the armhole we use sanitary shoulder padding as indicated in the illustration. The haircloth down the front is joined to the shoulder padding over the chest and is in turn joined by linen canvas as shown. The seams are taped and double sewed throughout.

E3-6T. They are made up in **EATON BRAND** way, hair cloth fronts, hand button holes, hand felled collars, hand padded lapels, stylish three button single breasted sack shape. The fabrics are imported from England. One shade is dark olive with celtic woven stripe, the other is that stylish goods so much in vogue this season, a dark grey hairline effect with colored blue thread stripe. The linings are of the best throughout. Sizes 36 to 44

20.00

When ordering be sure to state size. Other Prices at \$16.50, \$18.00 and \$22.00.

See Our Spring and Summer Catalogue for other Clothing Prices

Write for the Spring
Catalogue—it is FREE

THE T. EATON CO LIMITED
TORONTO CANADA

Satisfaction Guaranteed
or Money Refunded