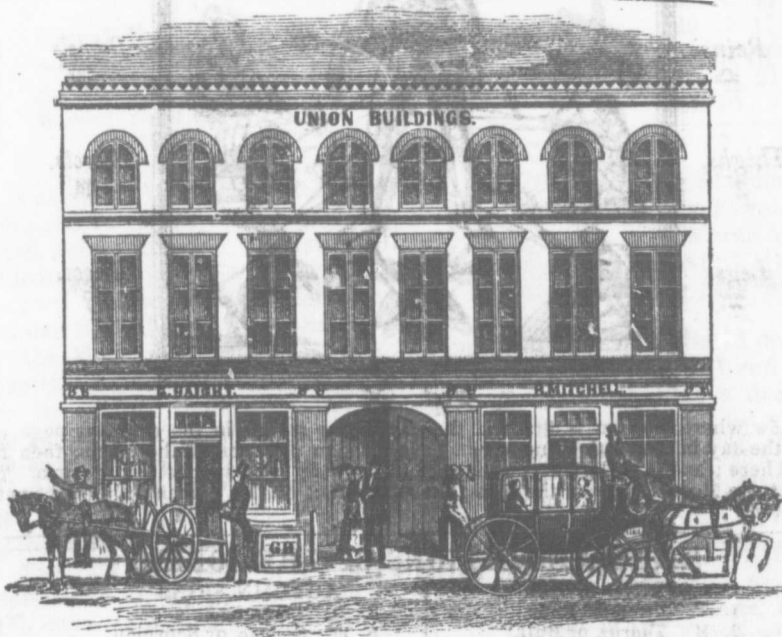


Thirty-eighth Year of Publication.

HUTCHIN'S IMPROVED FAMILY ALMANAC

AND EPHEMERIS OF THE MOTIONS OF THE SUN AND
MOON, THE TRUE PLACES AND ASPECTS OF THE
PLANETS, RISING AND SETTING OF THE
SUN, AND THE RISING, SETTING,
AND SOUTHING OF THE MOON,



FOR THE YEAR OF OUR LORD

1856.

"A Nimble Sixpence is better than a Slow Shilling."

PUBLISHED BY C. HAIGHT,
PICTON, C. W.