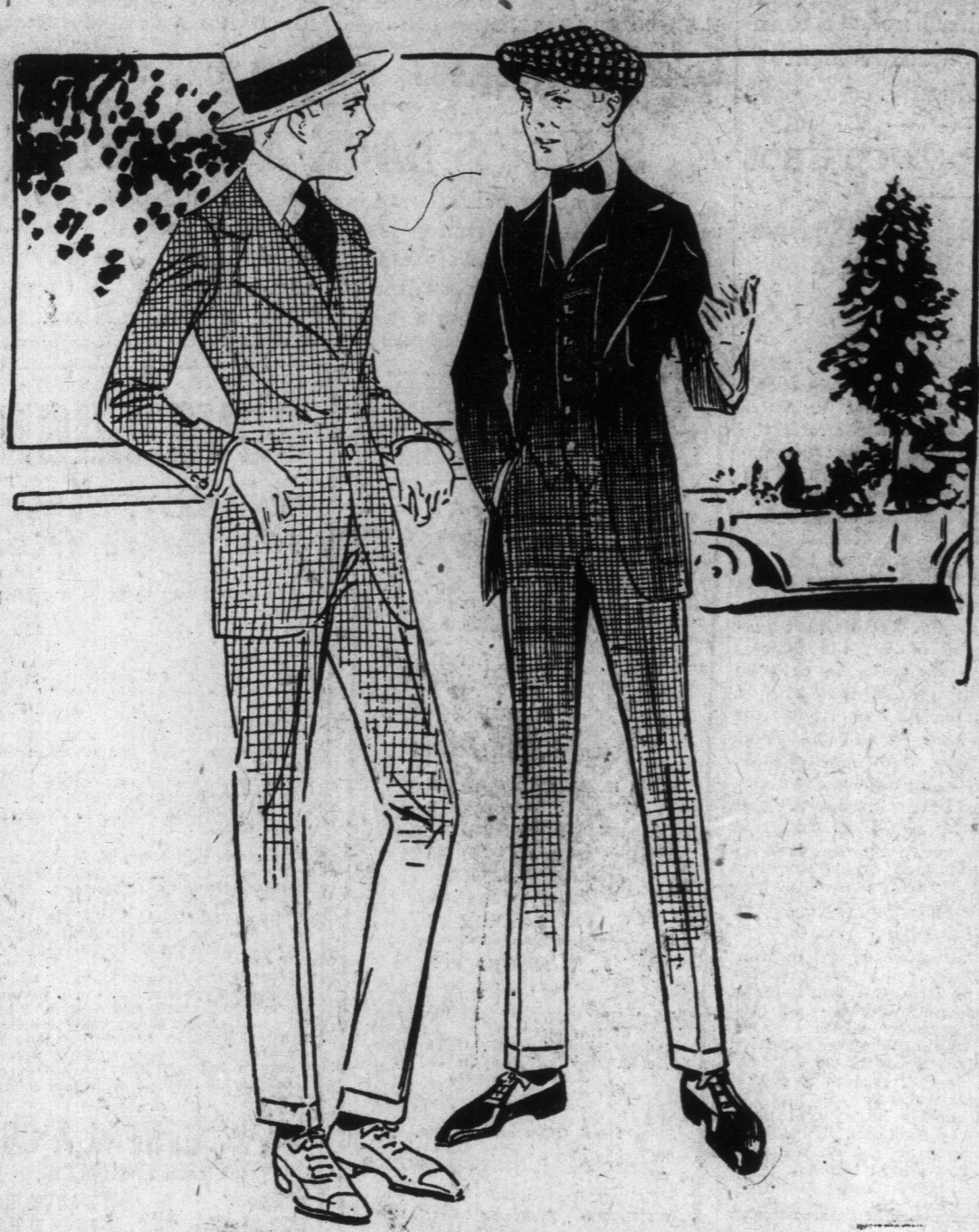


# EASY AND PROFITABLE MID-WEEK SHOPPING AT SIMPSON'S



## A \$15 Suit Clearance for Men and Youths

Two and three-piece suits; blue worsteds, with narrow white hairline stripe patterns, or black with double white hairline stripe; English tweeds, in light gray and brown check and small stripe patterns; smart, new styles, in two and three-button sack, two and three-piece suits. Sizes 34 to 44. Suits that were \$18.50, \$20.00 and \$22.00. Wednesday **15.00**

**Cool Cloth Suits for Men;** cold water shrunk; light weight worsted, in light gray; plain pattern, and unlined. Coat single-breasted, with patch pockets; trousers with cuffs. Sizes 36 to 44. Price **10.50**

**The Terry Cloth Bathrobes;** distinctive robes; of Turkish toweling; beautiful colorings and designs. **5.50**

**Boys' Suits, Wednesday \$3.49.** 105 smartly tailored suits, taken from regular stock; single-breasted Norfolk and double-breasted sack styles, with bloomer pants; English tweeds, in brown and gray. Sizes 24 to 30. Regularly \$5.50, \$6.00, \$6.50, \$7.00 and \$8.00. Wednesday **3.49**

## Men's Athletic Underwear

Check nainsook, B. V. D. style; long sleeves, and ankle or knee length drawers, in "porous" and "mesh" knit; also several makes in natural balbriggan; all sizes to 44. Wednesday **.44**

**Coat Shirts;** all sizes from 14 to 17. Regular 89c, \$1.00 and \$1.25. Wednesday **.69**

**Flannelette Nightrobes.** Sizes 15 to 19. Regular \$1.00. Wednesday **.67**

**Light Gray Summer Weight Flannel Shirts.** 14 to 17. Regular \$1.25. Wednesday **.95**

## Men's and Youths' Straw Boater Hats

Latest shapes, in rough, sennit or fine split braid; medium or high crown; wide or narrow black silk bands; also in negligee shapes, with roll brims and easy-fitting sweatbands. Regular \$1.00, \$1.50. Wednesday **.49**

Served Daily in the Palm Room and Lunch Room: Breakfast 8.30 a.m. to 10.30 a.m. Luncheon 11.30 a.m. to 2 p.m. Afternoon Tea and Light Refreshments 2.30 p.m. to 5.30 p.m. Lunch Room open from 8.30 a.m. to 5.30 p.m.

### A Practical Box for the Bedroom

Here at less than cost price is just the sort of box you want for guest room or sewing room, built as you could not build it at twice the price: A thoroughly seasoned basswood box, covered with strong china matting, trimmed with varnished wood.

- 27-inch size. Regularly \$3.65. Wednesday **2.98**
- 30-inch size. Regularly \$4.35. Wednesday **3.48**

### Dress Fabrics

**Brilliant Mohair Lustras, 39c.** Guaranteed Bradford dyed lustras; rich, brilliant finish; every wanted shade and black. Regular 50c. Wednesday **.39**

**English Serges,** contracted for long ago, and now worth from 65c to 75c; guaranteed shades of indigo, navy and black. Wednesday **.55**

**Cream Serge Suiting,** limited quantity; fine twill; soap shrunk; 52 inches wide. Regular \$1.50. Wednesday **1.25**

**\$1.00 Armure, Poplin and San Toys;** full range of shades and black. Regular \$1.00. Wednesday **.75**

### Four Silk Specials

**Black Duchesse Satins, Paillettes and Taffetas,** a clearance of all broken lines formerly priced from \$1.29 to \$1.39. Wednesday, per yard **1.18**

**200 yards Black Chiffon Taffeta,** a soft, supple weave, 40 inches wide. Regular \$1.75. Wednesday **1.44**

**Ivory Japanese Silks,** for middies, one yard wide. Regular 85c. Wednesday **.73**

**Colored Duchesse Paillettes and Messalines,** big color ranges, fashionable tones with ivory and black. Regular \$1.19 and \$1.25. Wednesday **.94**

### White Wash Goods Specials

- 36-inch White Indian Head **.91**
- 36-inch White Ratine Stripe Crepe **.25**
- 40-inch White English Voiles **.40**
- 20-inch White English Ratines **.40**
- 27-inch Vestings, new designs **.40**
- 40-inch Swiss Crepes and Voiles **.25**

### Lingerie Blouses \$2.88

A small but most attractive collection of slightly muscled blouses, otherwise perfect; assortment of individual designs; 100 only. Regularly \$3.95, \$5.00 and \$5.95. Sizes 34 to 42 in. Wednesday **2.88**

### Shantung Silk Petticoats \$1.98

Extra quality, in the popular natural shade only; cut full and made with tailored flounce, trimmed with pin tucking and self underpiece. Lengths 36 to 42. Wednesday **1.98**

**\$3.00 House Dresses, \$1.49**—Misses' and women's house or porch dresses of fine ginghams, cotton voiles, linene, muslin and figured crepes; sky, helio, pink, old rose, also black and white; many different styles in the lot; three-quarter sleeves and "V" yokes; sizes in the lot 16 to 18, 34 to 40. Regularly \$2.75 and \$3.00. Wednesday **1.49**

### Manufacturer's Entire Stock of Women's and Misses' Summer Dresses

**ONE-THIRD TO ONE-HALF LESS THAN NORMAL PRICES.**

**Lot No. 1**—Crepes, voiles, muslins, white self shades, printed lawns, Dolly Varden voiles, spots or stripes, flared, pleated, tiered or ruffled skirts; embroidered organza vestees and collar, crush girdle or belted. Regularly \$7.00 to \$8.50, for **3.95**

**Lot No. 2**—150 dainty white dresses, plain or scalloped coatee styles, fancy blouse or combination lace effects; pleated, tiered or shirred skirts, fancy girdle or trimmings of colored embroidery. Regularly \$11.50 to \$16.50. Wednesday **6.95**

**WOMEN'S SUMMER SUITS, \$3.95. FORMERLY \$6.95.**

50 only, Beech Cloth Suits (washable), tailored, plaited or belted styles, with flared skirts **3.95**

**CREAM SERGE SUITS, \$7.95.**

Just 20, made from imported serges, in a variety of styles, all this season's models. Regularly \$18.50. Special **7.95**

## A Mid-Week Sale of "Victor" and "Burt & Packard" Boots for Men \$2.95, and "Queen Quality" and "Dorothy Dodd" Shoes for Women \$1.99

**"BURT & PACKARD" AND "VICTOR" BOOTS, WEDNESDAY \$2.95.** 250 pairs of each brand men's boots, worth \$4.50 to \$5.00; all leathers; three sole weights; new and popular style toes; button, blucher and lace patterns; best grade, superior footwear, selected from our regular stock; all sizes and half sizes in the lot. Regular \$4.50 to \$5.00. Wednesday **2.95**

**"QUEEN QUALITY" AND "DOROTHY DODD" SHOES, WEDNESDAY \$1.99.** 1,200 pairs to select from; all the newest and most popular summer shoes, in pumps, colonials and Oxfords; everything the best in these famous brands; widths A to E; sizes 2 1/2 to 7 in the lot. "Queen Quality" and "Dorothy Dodd," Wednesday for **1.99**

**\$3.00 TO \$4.00 SLIPPERS, WEDNESDAY \$1.99.** Ladies' Suede, Patent, Kid and Calf Leather Slippers; ankle and instep straps, bows, buckles, buttons and bead ornaments; these slippers suitable for all occasions; all sizes in the lot. Regular \$3.00 to \$4.00. On sale Wednesday **1.99**

**600 PAIRS MEN'S BOOTS, \$1.49 PER PAIR WEDNESDAY.** Blucher, lace and elastic styles, in fine black dingo kid; splendid wearing soles; low and military heels; round and wide toes; all sizes. Value \$2.00 and \$2.49. No 'phone or mail orders. Wednesday **1.49**

**400 PAIRS PUMPS, COLONIALS, OXFORDS, WEDNESDAY 79c.** Ladies' Summer Shoes, made of light tan and mahogany calf and chocolate kid leathers; light summer soles; Cuban and military heels; easy fitting widths; sizes 2 1/2, 3, 3 1/2, 4, 4 1/2. Values \$2.00 to \$4.00. No mail or 'phone orders. Wednesday, 8.30 **.79**

**BOYS' \$1.99 TO \$2.29 BOOTS, \$1.49 WEDNESDAY.** 600 Pairs Boys' Quality Boots. Blucher styles, selected gunmetal calf, dingo kid and box kip leathers, single and double thick soles, low and military heels; boots that will stand the racket; sizes 11, 11 1/2, 12, 12 1/2, 13 and 13 1/2. Values \$1.99 to \$2.29. No mail orders. Wednesday **1.49**



### Hosiery

**Women's Plain Black Cotton Hose,** fast dye, extra fine quality; sizes 8 1/2 to 10. 15c value. Wednesday **.11**

**Women's Plain Black, Tan and White Lisle Thread Hose,** strong, fine thread; sizes 8 1/2 to 10. 25c value. Wednesday, 3 pairs **55c**; pair **19c**.

**Women's All Real Lisle Thread Hose,** extra fine quality, mercerized finish; black, white and colors; sizes 8 1/2 to 10. Wednesday, 3 pairs **1.00**; pair **35c**.

**Men's Fine Lisle Thread Sox,** black, tan, white, navy, gray, purple and red; sizes 8 1/2 to 10. Wednesday **.25**

### ROOM LOTS OF WALL PAPERS 98c SPECIAL PRICES ON BABY CARRIAGES

### Toilet Goods

Loosen's Real Ebony Hair Brushes. Regularly \$2.00 to \$4.00. Special, 25 per cent. off regular prices.

Women's Dressing Combs. Regularly 75c. Special **.49**

Real Ebony Military Brushes. Regularly \$1.25 pair. Special **.98**

Spanish Pure Castile Soap, 2-lb. bar, 30c; also in cakes, 4c each.

Roger & Gallet's Sandalwood Toilet Soap. Special, 3 cakes for **.25**

Premier Grape Toilet Paper. Special, 5 rolls for **.25**

Imported Face Powders. Special Half Price.

Odorono, deodorant. Special **.55**

Williams' Talcum Powders, face chamouis given with each tin. Special, per tin **.19**

Cream Eucaly. Special **.50**

Pinaud's Lilac de France Toilet Water. Special **.65**

\*War Stamps Extra.

### L. SIMPSON DRUG

Ammonia Powder, large package. 10c size. Wednesday, 4 for **.25**

Fruit Jar Rings, best quality, white rubber, per dozen, 3c; red rubber, per dozen, 10c.

Rubber Gloves, good wearing, protects the hands while preserving fruit, etc., regularly \$1.00. Special **.49**

Water Wings, best English make. Wednesday, 3 packages **.25**

Bath Spray, best quality, good size. Wednesday **1.00**

Bath Caps, military hat, good size. Wednesday **.25**

Foot Powder, relieves tired feet. Wednesday **.10**

\*Extract Jamaica Ginger, 20c bottles. 10 Wednesday

Fly Pads, regular 5c package of 3. Wednesday, 3 packages **.15**

Little's Phenyle Disinfectant, powder form, regular 25c. Special **.15**

Grape Juice, 1/2-gallon. Pint size **.20**

\*War Tax Extra.

## FREE DELIVERY---Simpson's Pay Charges

Visitors to the city who know the advantages of Simpson's One-day Service by mail are reminded that they can purchase here in the Store the same class of merchandise as we catalogue, and HAVE THE GOODS DELIVERED TO THEIR HOMES WITH ALL CHARGES PREPAID BY US.

Groceries, Furniture and other heavy or bulky goods not catalogued are also prepaid to any station in Ontario when the total order is ten dollars or over.

## Unusual Circumstances Produced This Price-List on Made-Up Sheets Today

Several of the largest Lancashire mills were induced to sell to our buyer their odd lots at much below usual rates. These excellent sheets are made up in the most wanted sizes, and are offered at practically what they usually cost at the mill; all perfect, and all of linen-finished, plain bleached sheeting.



Here are sizes and prices:

- Lot No. 1.—For extra large beds; size 88 x 100 inches. Regularly \$3.00. Clearing Wednesday, pair **1.98**
- Lot No. 2.—Size 78 x 100 inches. Regularly \$2.50. Clearing, pair **1.88**
- Lot No. 3.—Size 78 x 90 inches. Regularly \$2.25. Clearing, pair **1.69**
- Lot No. 4.—Size 70 x 90 inches. Regularly \$2.00. Clearing, pair **1.45**
- Lot No. 5.—Size about 79 x 90 inches. Regularly \$1.29. Clearing, pair **1.00**

Will fill phone orders while quantities last. On sale Fourth Floor. Extra space. Extra salespeople.

## Small Reversible Rugs at 75c A PRICE LITTLE MORE THAN THAT OF A JAPANESE GRASS MAT.

Very attractive, small wool rugs; woven with both sides alike; blended mottled centres, and some with plain brown, gray, rose and blue centres; all of them with quaint borders across the ends; the rugs will give excellent wear, some of them being very thick; size is 25 in. x 48 in. We will fill mail and phone orders while they last. Wednesday, each **.75**

## Beds—Springs—Mattresses

**COMPLETE OUTFITS \$6.15.** Bedstead, pure white enamel finish, brass caps. Mattress, curled seagrass and felt. Bed Spring, hardwood frame, woven steel wire fabric. Bed, Mattress and Spring, complete, standard sizes. Regularly \$8.10. Wednesday **6.15**

**COMPLETE OUTFIT, \$12.25.** Brass Bedstead, 2-inch posts. Mattress, all cotton felt. Bed Spring, steel tubing frame, strong woven steel wire springs. Bed, mattress and spring, all standard sizes. Regularly \$21.75. Wednesday **13.25**

**Iron Bedstead,** white enamel, brass top rails, caps and uprights, all standard sizes. Regularly \$5.25. Wednesday **3.95**

**Brass Bedstead,** 2-inch continuous posts, standard sizes. Regularly \$13.90. Wednesday **10.35**

**Brass Bedstead, 2-inch posts and top rails,** ball corners, in 4 ft. and 4 ft. 6 in. sizes only. Regularly \$27.75 and \$30.00. Wednesday **18.35**

**Brass Bedstead, 2 1/2-inch posts and 1 1/2-inch fillers,** all standard sizes. Regularly \$34.00. Wednesday **24.95**

**Camp Cot and Mattress.** Complete. Wednesday **19.95**

Mattress, cotton felt, all standard sizes. Regularly \$7.00. Wednesday **4.75**

## Factory Clearance of Chinaware

Blue Decorated Cups and Saucers. Regularly \$1.50 per dozen. Wednesday **.55**

English Tea, Breakfast and Dinner Plates **.15**

35c English Milk Jugs, various decorations, 1 and 2 pint sizes. Wednesday **.18**

35c English Teapots **.15**

**ODD TOILETWARE, HALF PRICE.** Limited Quantity Only.

Covered Chambers, each **.49**

Large Jugs, each **.49**

Covered Soap Dishes, each **.49**

**"PHONE YOUR ORDER FOR FRUIT JARS WEDNESDAY.**

Perfect Seal Fruit Jars—Pints, per dozen, 80c; quarts, per dozen, 90c; half-gallon, per dozen, \$1.00.

Screw Top "Crown" Jar—Pints, per dozen, 55c; quarts, per dozen, 65c; half-gallon, per dozen, 75c.

Glass Fruit Jar Fillers, each **.10**

Tin Top 8-oz. Jelly Glasses, dozen **.24**

Tin Top 5-oz. Jelly Glasses, dozen **.30**

## Alcohol Stoves

Solid Alcohol; cannot spill, leak or evaporate; it looks like cold cream and is just as safe; convenient for camping, automobile trips and summer cottage use, 15c each, 2 for 25c.

The Solid Alcohol Stove, stand and can of alcohol pack into the kettle for convenience in traveling. Price complete, 75c and \$1.00.

A small tin of alcohol and Oblong Kettle. Complete for **.15**

**ALUMINUM PRESERVING KETTLES.**

100 only, large size (14-qt.) Aluminum Preserving Kettles. Reg. \$2.72. Wednesday **1.98**. Other sizes specially priced at 75c, 98c, \$1.25 and \$1.75.

## Groceries

**TELEPHONE DIRECT TO DEPT. ADELAIDE 6100.**

- 5,000 packages Redpath's Sugar, in 5-lb. packages. Per package **.35**
- 4,000 tins Finest Canned Corn, 3 tins **.22**
- 2,000 stone Fresh Rolled Oats. Per stone **.22**
- Choice Side Bacon, sliced. Per lb. **.25**
- Clark's Pork and Beans, in Chili Sauce, tall tin **.24**
- Fancy Rice, 5 1/2 lbs. **.25**
- Teffer's Cream Soda Biscuits. Large package **.25**
- Fresh Butter Milk. Per gallon **.29**
- Choice California Prunes, 2 lbs. **.15**
- Finest Cooked Ham, machine sliced. Per lb. **.25**
- Macaroni or Spaghetti, 3 packages **.23**
- Banner Brand Jam, 5-lb. ball **.25**
- Dalton's Lemonade Syrup, 3 bottles **.48**
- Heinz Pickles, picnic size. Bottle **.25**
- Malta Vita, 3 packages **.14**
- Onion Salt. Bottle **.14**
- E. D. Smith's Marmalade, 18-oz. jar **.25**
- Choice Olives, stuffed or plain. Bottle **.15**
- Blue Feather Sardines. Per tin **.28**
- Knox's Gelatine. 2 packages **.10**
- Clark's Chipped Dried Beef, 1/2-lb. tin **.25**

**Crackers Shortening.** Per tin **.18**

**Blue Feather Sardines.** Per tin **.28**

**Knox's Gelatine.** 2 packages **.10**

**FRESH ROASTED COFFEE, PER LB., 27c.**

1,000 lbs. Fresh Roasted Coffee, in the best, ground pure or with chicory. Wednesday. Per lb. **27**

**RENTS**  
Special attention  
of Rent and Mortg.  
E. H. WIL  
K

**PROBS**

**GER**

**Canada**

**FEW FEAT**  
**MARK F**  
**IN FRE**

**Cannonading**  
Throuth Da  
at N

**CONFLANS**

**German Rai**  
Damaged by  
Squ

Special Cable to The  
LONDON, July 21  
ity in France sym  
to the Russians  
Russians must hav  
ly well in hand, r  
passed by the ar  
Flanders without  
any new offensive  
round of a day's c  
actions in Artoise  
and Apremont and  
the principal fe  
French war office  
around Bouches  
seeding with aerial  
grenades.

German G  
A German attac  
edge of the Argon  
enemy a footing  
a forward salient  
In the Vosges it  
yesterday afterno  
gained French tr  
part of the German  
the heights over  
side of 18 machin  
was made within  
the rest of La Lin  
Confians Junct  
A squadron of  
paid a surprise vi  
railway junction o  
north of Metz, th  
work of railways  
German commun  
armies around Ve  
and the Meuse, a  
thians have been  
for some time pas  
ped off 18 machin  
hita from heavy t  
rectly on the sta  
shed. Three Ger  
made their appe  
by the French so  
and brought dow  
planes also bom  
station at Colm  
Eight shells were  
way tracks.

French Aviat  
The Germans f  
svit or was comm  
Bepaume, and th  
into their hands  
also report the  
near by French  
ten bombs fell  
a civilian and in

**KINGSTON H**  
**RECRU**

Dr. M. Clark,  
Thousand M  
Gives M

Special to The To  
KINGSTON, O  
Michael Clark, M  
travelled 2,000 mi  
tonight to addre  
in Artillery Park  
of the Speakers'  
stimulate recruit  
the presentation  
some with hamms  
for m. to fight f  
Three. He was stat  
meeting which w  
Mayor Sutherland  
M. P. also spok  
A special feature  
the presentation  
Travelers' Assoc  
the department o  
the 1914 Overseas  
Barrfield camp  
held to A  
bands were stat  
of the city and  
young men to re  
were at the  
large number we  
this is the first  
which are to  
ulate recruiting.

**The Robert Simpson Company, Limited**