

to 12.00; bar iron, Canadian, \$1.70 to 1.75; British, \$2.25; best refined, \$2.40; Low Moor, \$5.25; Canada plates—Blaina, or Garth, \$2.10 to 2.15; all polished Canadas, \$2.75; Terne roofing plate, 20 x 28, \$6.00 to \$6.25. Black sheet iron, No. 28, \$2.30; No. 26, \$2.20; No. 24, \$2.10; tin plates—Bradley charcoal, \$5.25 to \$5.50; charcoal I.C., \$3.50; P.D. Crown, \$4.00; do. I.X., \$4.75 to 5.00; Coke I.C., \$2.75 to 2.85; coke wasters, \$2.75; galvanized sheets, No. 28, ordinary brands, 4½ to 4¾; No. 26, 4c.; No. 24, 3½c., in case lots; Morewood, 5½ to 6c.; tinned sheets, coke, No. 24, 6 to 6½; No. 26, 6½ to 6¾; the usual extra for large sizes. Hoops and bands, per 100 lbs., \$2.30 to 2.35. Steel boiler plate, ¼ inch and upwards, \$2.10 to 2.15; ditto, three-sixteenths inch, \$2.60; common tank iron, \$1.65 to 1.85; heads, \$2.85; Russian sheet iron, 10 to 10½; lead, per 100 lbs., pig, \$2.60 to 2.75; sheet, \$4.00 to \$4.25; shot, \$6.00 to 6.50; best cast steel, 10½ to 12c.; spring, \$2.50; tire, \$2.50 to 2.75; sleigh shoe, \$2.40; round machinery steel, \$3; ingot tin, 18 to 18½c.; bar tin, 25c.; ingot copper, 9½ to 10c.; sheet zinc, \$5.00 to 5.25; spelter, \$4.50 to 4.75; American do., \$4.50 to 4.75. Antimony, 10 to 12c.; bright iron wires, Nos. 0 to 8, \$2.65 per 100 lbs.; annealed do., \$2.70; galvanized, \$3.35; the trade discount on wire is 20 per cent. Barb and twisted wire and staples, 3½c. Coil chain, ½ inch, 5c.; ¾ inch, 4½c.; 7-16 in., 4½c.; 1 in., 3½ to 4c.; 1½ in., 4c.; 2 in., 3½c.; 2½ in., and upwards.

**OILS, PAINTS AND GLASS.**—Business in these lines may be called pretty active, and most houses are well employed shipping out goods. As regards prices, there is little change in any department. Dry lead is cabled ten shillings advanced in England, but prices of ground white are unaltered locally. Castor oil, though firmer in the east, is selling at former quotations, there being considerable in stock here. We quote:—Turpentine, 45 to 46c. per gal. for single barrels; two to four barrels, 44 to 45c. Linseed oil, raw, 54c. per gal.; boiled, 57c.; 5-barrel lots, 1c. less; olive oil, machinery, 90c.; castor, in lots, 6½c.; single cases, 6½ to 6¾c.; tins, 7c.; Nfld. cod, 38 to 40c. per gal.; Gaspe oil, 38c. per gal.; steam refined seal, 39 to 40c., in small lots. Leads (chemically pure and first-class brands only), \$4.50 to 5.00; No. 1, \$4.50; No. 2, \$4.25; No. 3, \$4.00; dry white lead, 5c.; genuine red do., 4½c.; No. 1 red lead, 4c.; putty, 2c. in bladders per brl.; London washed whiting, 40 to 45c.; Paris white, 90c.; Venetian red, \$1.50 to 1.75; yellow ochre, \$1.50 to 1.75; spruce ochre, \$2.25 to 2.50; window glass, \$1.20 per 50 feet for first break; \$1.30 for second break; third break, \$2.80.

#### TORONTO MARKETS.

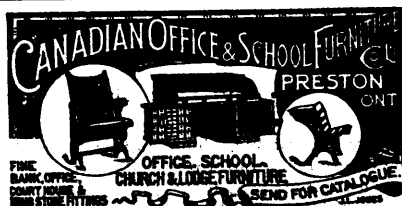
TORONTO, Sept. 13th, 1894.

**DRUGS.**—Numerous small orders make up a fairly large total, and the business of the last few weeks is generally considered satisfactory. The *N. Y. Journal and Bulletin of Commerce* says: Opium continues to weaken. Quinine shows a slightly easier tendency from second hands. Clove oil is slightly higher. Shellac is strong and advancing. Reports received from Aden state that owing to the prevailing low prices the crop of gum is not being gathered this season.

**DRY GOODS.**—The city warehouses are filled with country merchants, and even a larger

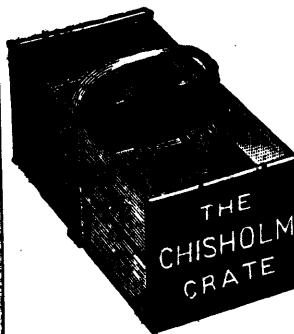
number of visitors are in the city than were here during the millinery opening. Some orders have been placed, but as a rule the parcels taken are small, and buyers are pursuing a very cautious policy. Dress goods, of course, attract most interest. Serges in blacks, navies and browns are leaders. Covert cloths are finding favor, while German plaids and fancy weaves are being sold.

**GRAIN.**—The market is dull and unchanged. The movement of wheat is mainly to millers. A quantity of wheat is, however, going into consumption for feeding purposes. Wheat is cheaper than peas, and in the United States is on much the same basis of values as corn.



### The Oakville Basket Co.

MANUFACTURERS OF



- 1, 2, 3 bushel grain and root baskets.
- 1, 2, 3 satchel lunch baskets.
- 1, 2, 3 clothes baskets.
- 1, 2, 3, 4 market baskets.
- Butcher and crockery baskets.
- Fruit packages of all descriptions.

For sale by all woodenware dealers.

Mention this paper.

OAKVILLE, Ontario

### Fine Electric . . . Street Cars

OUR SPECIALTY

We also manufacture Horse and Trail Cars of every description o o o o o

**PATTERSON & CORBIN**  
ST. CATHARINES, Ont.

**400 ACRES** choice farm land for sale in the township of Romney, Co. of Kent, which is the Garden of Canada. These lots are situated on either side of the main road leading southward from Tilbury Centre toward Lake Erie. A portion of the land is within two miles of the lake and a half mile north of a station on the new Detroit River and Lake Erie Railway. It is also about five miles south of Tilbury Centre on the Canada Southern and Canada Pacific Railways. The Grand Trunk is still one mile farther north. On either of these roads a person may reach Detroit in less than one hour. The soil, which is deep and rich, thoroughly drained, is covered with ash, elm, hickory, basswood, etc. Terms to suit purchasers. **EDWARD TROUT**, Cor. Church and Court Sts., Toronto.

### The Largest Scale Works In Canada

Over One Hundred styles of

Hay Scales, Grocers' Scales, Grain Scales.

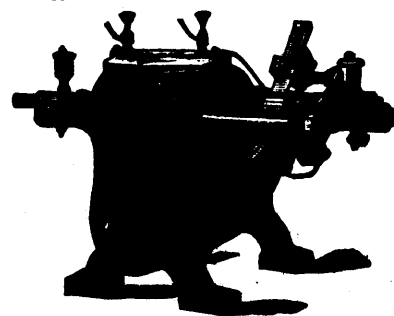
Improved Show Cases. Reduced Prices.

**C. WILSON & SON,**  
46 Esplanade St., Toronto.



### STEAM'S NOT IN IT

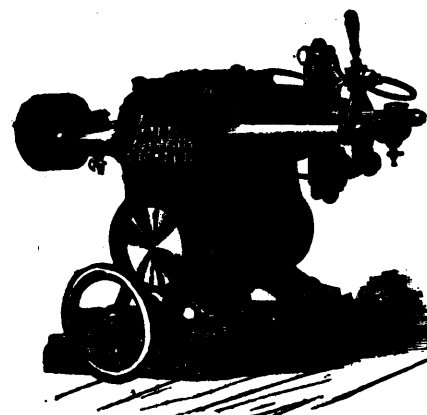
Either as to cost or efficiency, with one of our celebrated **ELECTRIC MOTORS.**



See the one that runs the *MONETARY TIMES* big presses and freight elevator. Not the slightest jar and almost noiseless.

Write and we will call and see you.

**KAY ELECTRIC WORKS,**  
HAMILTON, ONT.



### TORONTO ELECTRIC MOTOR CO.

MANUFACTURERS OF

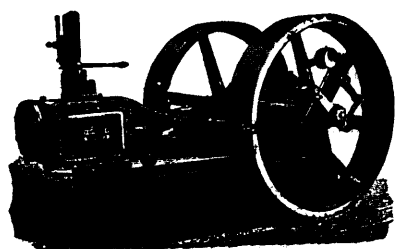
Arc Lamps for Incandescent Current.

Repairing a Specialty.

107 Adelaide St. West, Toronto.

**MONTREAL ELECTRIC CO.,** Agts. for Province Quebec, 302 St. James St., Montreal

**DYNAMOS AND MOTORS**



### The "Robb-Armstrong" Engine

Is up to date in design and workmanship. Simplest and best governor made. Interchangeable parts. Economical in use of steam and oil.

**ROBB ENGINEERING CO., Ltd.**  
Amherst, N. S.

### ELECTRIC WATER WHEEL GOVERNOR

(PATENTED)

Variations in speed detected by fast running, sensitive Governor Balls. Gate movement instantly set in operation by electric current. Quick and powerful action.

Thirty days trial. Write for particulars.

**WM. KENNEDY & SONS,**  
OWEN SOUND, Ont.

