

A. G. Spencer.....	Ottawa.....	\$ 1 00
E. P. Venables.....	Vernon, B. C.....	1 00
C. Vane.....	Treesbank, Man.....	1 00
E. Vane.....	" ".....	1 00

Also a number of smaller subscriptions for amounts less than one dollar. The total amount received to date is a little over \$1,270.00.

ARTHUR GIBSON, Central Experimental Farm, Ottawa, Treasurer.

June 15, 1909.

TWO FOSSIL CHRYSOPIDÆ.

BY T. D. A. COCKERELL, UNIVERSITY OF COLORADO, BOULDER, COLO.

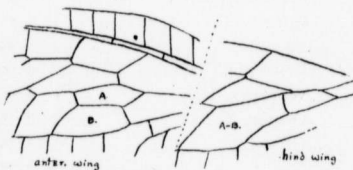
Palæochrysa concinnula, sp. nov. (Fig. 5.)

Length of anterior wing about 12 mm; venation dark brown.

Anterior wing: Costal cells about 14; cells between radius and radial sector 9, the first fully twice as long as the third; cells between radial sector and media 10, successively shorter from the fourth on, but without any abrupt change of size, as in *Tribochrysa*; "third cubital cell" (M_{3+1}) divided longitudinally, as shown in the figure; cells beyond "third cubital" 9, but the cell counted as the tenth of the series above may as well belong to this series, reversing the numbers cited; six veins forked on the lower margin, but the fork of the fifth very small.

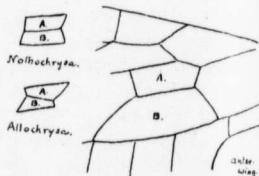
Posterior wing: "Third cubital" not divided; other characters are shown in the figure. (In all the figures A and B are the "third cubital.")

Hab.—Miocene shales of Florissant, Station 14. (*S. A. Rohwer.*)



Palæochrysa concinnula Ckll.

FIG. 5.—*Palæochrysa concinnula*, Ckll.



Palæochrysa ferruginea Ckll.

FIG. 6.—*Palæochrysa ferruginea*, Ckll.

Palæochrysa ferruginea, sp. nov. (Fig. 6.)

Length of anterior wing 11 1/2 mm.; venation as preserved ferruginous, possibly green in life.

July, 1909