

IN THE CITY OF THE BRONX CERTAINTIES

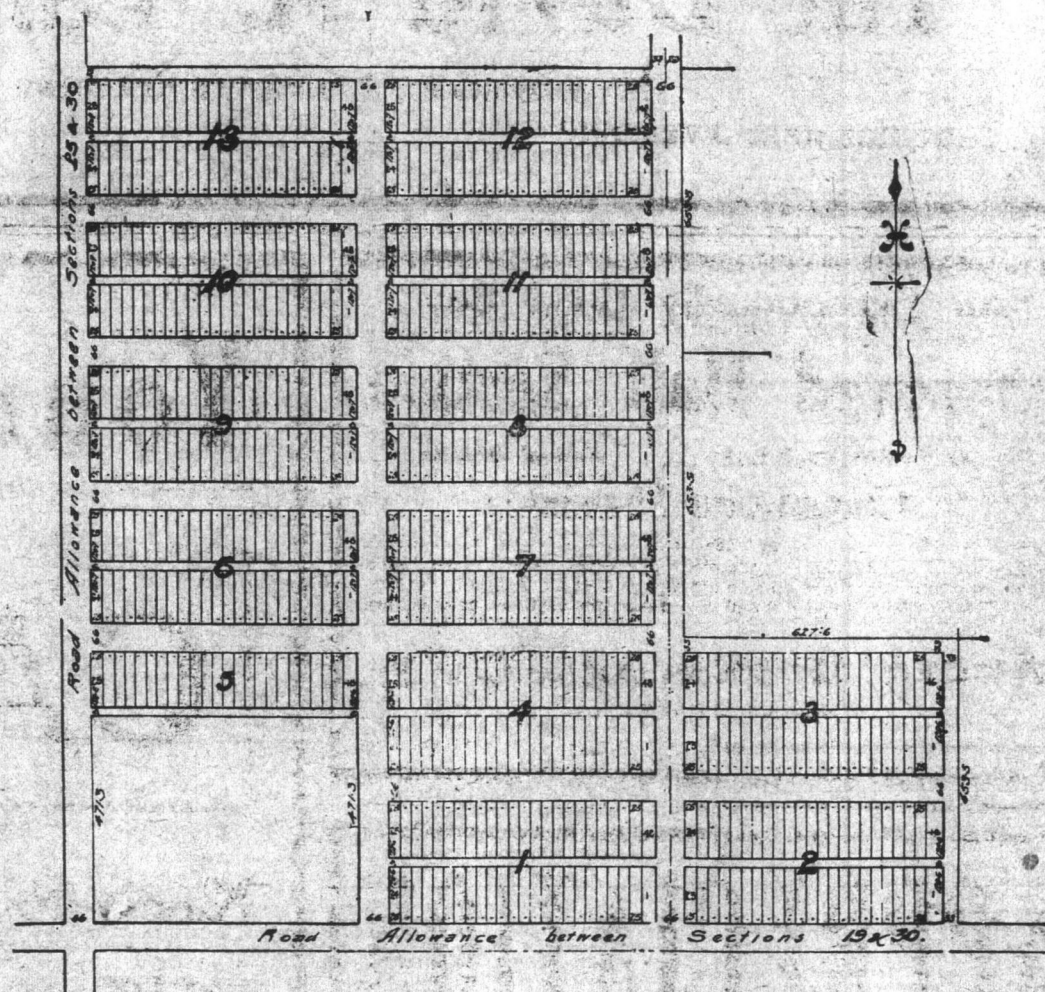


BIRDSEYE VIEW OF CALGARY
SHOWING LOCATION OF "THE BRONX"

OVERLOOKING THE CITY FROM NORTH-WEST OF THE BRONX. SPLENDID VIEW OF THE ROCKIES, THE RIVER, AND ASSURED CAR LINE ROUTE FROM PROPERTY

Buy in Calgary

There are a hundred thousand square miles of land tributary to Calgary, and the world is moving in to occupy it. Calgary has a greater area of resources and a greater future than any other city of its size on the continent. Calgary is just now receiving railroads to open up this vast acreage, and another half dozen years will witness giant enterprises feeding long trains of cars where now is only buffalo grass. We have ample resources for a city vastly greater than even the most optimistic at present dream of.



Buy in The Bronx

Land immediately adjoining the south of the Bronx is valued at \$1,000 per acre. Parkdale at half a mile was put on the market at \$90 to \$100, and is now selling at from \$150 to \$350 per 25 ft. lot. 400 lots of the Bronx are richly cultivated. The soil is all warm, black loam, no stone or gravel. There is not a foot of rough or waste land in the property, and besides there is an abundance of clear, cold spring water for immediate use for those wishing to build without delay. Clear Torrens title to every lot.

PRICES: Blocks 1, 2, 3, 4 and 5, \$70; Blocks 6, 7, 8 and 9, \$60; Blocks 10, 11, 12 and 13, \$60

YOUR CHOICE OF THE FOLLOWING EASY TERMS:

\$10 PER LOT CASH, BALANCE \$10 PER LOT PER MONTH.
ONE THIRD CASH, BALANCE 3, 6 AND 9 MONTHS.

\$10 PER LOT CASH, BALANCE \$5 PER LOT PER MONTH.
ALL CASH, DISCOUNT OF FIVE PER CENT.

LOTS ON THE SOUTHEAST AND NORTHEAST CORNERS ARE EXTRA LARGE, SOME 44 FT. WIDE. PURCHASERS MUST BUY AT LEAST 8 LOTS WHEN ONE OF THESE CORNERS ARE INCLUDED, AND NOT LESS THAN FOUR LOTS ON THE SOUTHWEST AND NORTHWEST CORNERS OF THE BLOCKS.

William A. Lowry Company, Limited

Offices: First Street East

Telephone 1760

Opposite the Post Office