

Mass Outlaws Reap Rich Harvest On Brazil's Border.

de Janeiro.—(A.P.)—Frontier lines that bring to mind the stirrings of Daniel Boone are being held in the local press from the man regions which border on the Amazon and the Guianas. According to these stories, and to reports that have been made from the frontiers to the government, contraband, clandestine gold mining and various kinds of desperadoes have been crossing the frontiers into Brazil in increasing numbers and have been leaving trails of blood and

smuggling gangs, for instance, are said to be large and powerful, with headquarters in coast towns. As a means of taming the frontier zones, the Brazilian Ministry of Agriculture, Commerce and Industry is planning to fill up a considerable strip of land along the boundary lines with Indian reservations and agricultural colonies. The Brazilian Indians are hardy and warlike, and it is believed that they would soon rid these regions of foreign invaders if they were given "property" to defend. Both the Indian Service and Interior Settlement Departments of the Ministry of Agriculture are engaged in the enactment of these pacification plans.

Convulsions of Nature.

RAISE BOTTOM OF OCEAN.
LONDON, Sept. 29.—Discovery by a cable repair ship that the bed of the ocean in the vicinity of St. Helena had risen two miles during the last 20 years has led to a belief among scientists that the whole southern Atlantic ocean bed is undergoing a vast submarine convulsion.

What Causes Earthquakes.

What is the cause of the terrible earthquakes which, like the recent one in Japan, often take so heavy a toll in human lives? There are three main theories. One theory is that the earthquake is caused, in the first place, by an atmospheric disturbance, such as a typhoon. The wind-storm, it is argued, lessens the pressure of air on the surface of the earth over which it has passed, and allows it to expand. It is this expansion which constitutes the earthquake. The second theory is that the whole world alters its position slightly and spins at a different angle. As a result, additional pressure is brought to bear on the crust of the earth in certain places. When this pressure falls on some part of the crust that is relatively thin, an earthquake—or movement of the earth—ensues. The third theory is that the centre of the earth, generally accepted as consisting of molten metal or gases, is slowly cooling. Thus the outer crust of the earth contracts, naturally to the greatest extent in those regions where the crust is thinnest. Japan is very unfortunately placed with regard to her position on the earth's crust, and over one period of seven years more than 5,000 shocks were recorded there of various degrees of severity. Tokio in particular has a sad history, for this is the third time that town has been practically wiped off the map.

Big Heart Throb in "Who Are My Parents?"

Here is a monster screen drama which presents a problem of the ages. It is a splendid photoplay that should appeal to those who care for good clean dramatic material. This William Fox Corporation feature picture comes to the Majestic Theatre next Monday.

Find Death Mask of Napoleon.
London, Sept. 29. (A.P.)—A wax mask of Napoleon, made a few hours after the Emperor's death by an English surgeon of the 20th Regiment of Infantry, has just been found hidden away in a house in a small French town. Several years after Napoleon's death the mask was sent to England where it was purchased by a Russian diplomat and presented by him to the Czar Alexander I. Later it was taken to Holland and Bavaria, but for the past 20 years it has been lost. An eye lash can still be seen attached to the mould.

Indianapolis.

INDIANAPOLIS.—Jail sentences, heavy fines and loss of their automobiles are proving effective in reducing the number of speeders in Indianapolis. The plan, introduced a short time ago by Judge Delbert O. Wilmett, has resulted in a general let down in speeding throughout the city, according to police officers. Judge Wilmett works on a scale. First offenders are fined a set amount for whatever speed they are convicted of having made, but do not have to pay if they relinquish their machines for a certain number of days. For example, a person convicted of driving 35 miles an hour is fined \$5 and costs. On payment of the costs and turning in his license plates and driver's certificate, the fine is suspended. In five days the offender again may drive his car. The faster a person drives, the heavier the fine and the longer he must be without his car. There is only one recurrence from a state farm sentence upon conviction for a second offense. That is—through the higher courts, to which a number of appeals already have been made.

English Theological Schools

REPORT DEARTH OF STUDENTS.
LONDON.—According to the London newspapers, there is a grave shortage of clergy in the Church of England. Official figures disclose that there are fewer than 13,000 incumbents this year, which is 8,000 less than the number required to carry on the work of the church. The theological colleges, the newspapers say, are nearly empty.

What's in a Name?

"Why, I didn't know we had such a factory in town. Where is it located?" "Well," replied Mrs. James, "husband calls it a bucket shop, but I think a pall factory sounds much better." —Forbes Magazine, (N.Y.)

General Slashtcheff Executed.

Zagreb, Sept. 28. (A.P.)—Recent arrivals from Moscow report the execution there of Gen. Slashtcheff, the defender of the Crimea during the world war.

Lay Forest Fire to Meteor.

Great Falls, Mont., Sept. 28. (A.P.)—Forest rangers of the Choteau station, near here, are investigating the report that a giant meteor, which fell in Sun River canyon, near Great Falls, on August 18, last, set fire to the timber on Pendagon mountain. The meteor fell about 10 o'clock at night and was seen by many Great Falls citizens. It lit up the surrounding country for about 20 minutes. The fire on Pendagon mountain was reported the next day.

Superior Values — IN — Ladies' Wool Sweaters

Ladies' Soft Wool Tuxedo Coat Sweaters

all much under price,
at \$3.95 each

Ladies' Heavy Wool Coat Sweaters

only \$3.00 each

Ladies' Soft Wool Pull-Over Sweaters

in the newer loose fitting makes,
only \$2.50 and \$2.95 each

All-Wool Fancy Mufflers

at 95c, 1.15, 1.30, 1.60 each

HENRY BLAIR

An opening here for a SMART, WILLING LAD to learn the Dry Goods business thoroughly; a splendid training assured to the right boy. Apply by letter only to
BON MARCHE
266 Water Street ; St. John's

Telegram Fashion Plates.

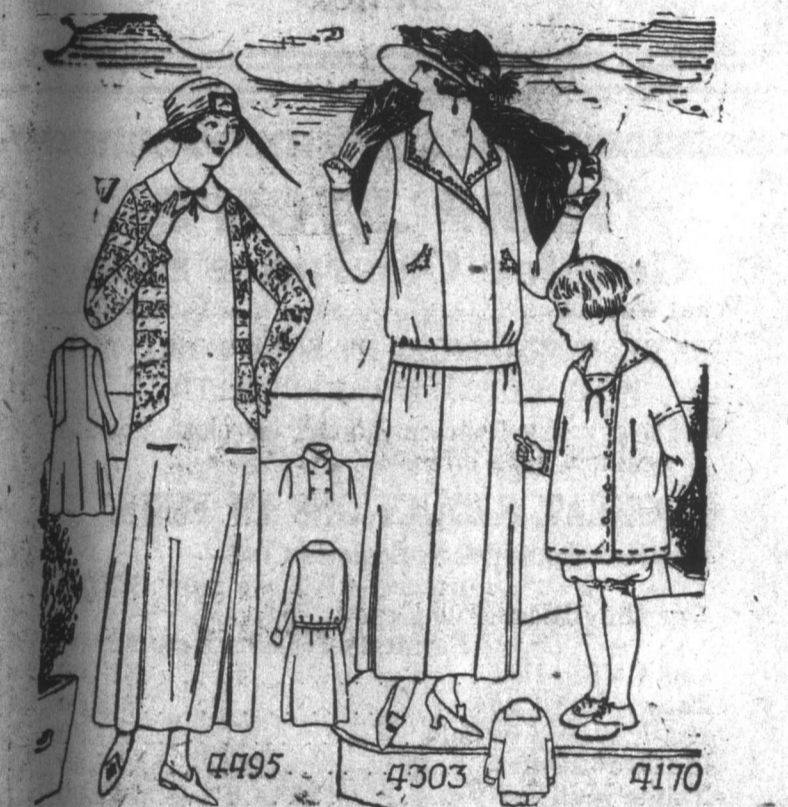
The Home Dressmaker should keep a Catalogue Scrap Book of our Fashion Plates. These will be found very useful to refer to from time to time.



A POPULAR STYLE FOR THE "LITTLE MAN"
4506. One could have this in jersey weaves, in flannel or serge. It is also a good model for linen, seersucker andingham.
The Pattern is cut in 3 Sizes: 2, 4 and 6 years. A 4 year size requires 2 1/4 yards of 36 inch material.
Pattern mailed to any address on receipt of 10c. in silver or stamps.

A BECOMING FROCK FOR THE GROWING GIRL.
4317. Percale was used for the dress, and linen for the gumpie. Skirt and blouse may be attached, or finished separately. The gumpie likewise. This is a good model for cretonne, or linen; or for serge, with silk or crepe for the gumpie.
The Pattern is cut in 4 Sizes: 6, 8, 10 and 12 years. A 10 year size requires 3 1/4 yards of 36 inch material for the dress, and 1 1/4 yard for the gumpie. Pattern mailed to any address on receipt of 10c. in silver or stamps.

A FROCK TO PLEASE THE LITTLE MISS.
4189. Picture pockets have long been a popular feature of children's dresses. This model is especially attractive, as it also shows the new broad collar. The Pattern is cut in 4 Sizes: 2, 4, 6 and 8 years. A 6 year size requires 3 1/4 yards of 32 inch material. To trim as illustrated, requires 1/2 yard of 32 inch contrasting material.
Pattern mailed to any address on receipt of 10c. in silver or stamps.



A STYLISH ONE PIECE DRESS.
4495. This model has youthful lines, and new style features. It portrays an attractive combination of plain and striped material. One could use braided or embroidered fabric for waist and sleeve, and taffeta, satin or kasha for the panel and skirt portions and for the collar.
The Pattern is cut in 3 Sizes: 16, 18 and 20 years. An 18 year size requires 5 1/4 yards of 40 inch material. To make sleeves and waist portions of contrasting material as illustrated requires 1 1/2 yard. The width at the foot is 2 1/2 yards.
Pattern mailed to any address on receipt of 10c. in silver or stamps.

A NATTY SUIT FOR THE LITTLE MAN.
4170. This is a comfortable style, with new and pleasing features. The inserted pockets in the smock will please the "little fellow." The "knickers" too boast of pockets that are large enough to hold the many things boys like to keep with them.
The Pattern is cut in 4 Sizes: 2, 3, 4 and 6 years. To make the suit for a 3 year size, will require 3 1/2 yards of 32 inch material. For knickers alone 1 1/2 yard is required.
Pattern mailed to any address on receipt of 10c. in silver or stamps.

A STYLISH DRESS IN ONE PIECE STYLE.
4303. Taffeta, satin, serge or linen could be used for this model. The vest portions are crossed in double breast style. The collar may be rolled high, or turned low.
The Pattern is cut in 3 Sizes: 16, 18 and 20 years. An 18 year size requires 5 1/4 yards of 40 inch material. The width at the foot is 2 1/2 yards, with plaits extended.

THE ENTERPRISE ALL CAST PIPELESS FURNACE

is not merely a furnace without pipes.
ALL CAST means a heavier furnace—a longer wearing furnace.

ALL CAST means that the radiator too is made of Cast Iron. The radiator extracts all the heat from the fire, and sends it up into the house—no out the chimney.

The ALL CAST Radiator is unaffected by the corrosive action of fuel gases, it will never wear out.

ALL CAST means that expansion and contraction are even,—that the whole furnace is proof for life against leakage of gas, smoke and dust. For this reason it is guaranteed absolutely

Dustproof

ALL CAST means lifetime satisfaction.

Every Enterprise ALL CAST Pipeless Furnace that we install—and being practical Tinsmiths we install them ourselves—carries with it the ALL CAST Guarantee of the makers. "You will be able to go around your house all next winter in your shirt-sleeves, if you install one of these Chill-Chasers in your home."

John Clouston

140-142 Duckworth St., -- Opposite Custom House

Sept 15, 22, 29 1923

SS
E
S!
S
COATS
se, Navy
each
What of the pampas of
and the best portion of
the area of southeast
JURRY CALL
terror into the hearts
of the uninsured with
thought that the de-
may eat up one's pos-
though no lives may
self a terrifying one
numbers that he has no
not let this be your
ure with US now and
SSIERS'
CE AGENCIES
John's.
Phone 244.
JOHN'S
ry Stores
y Choice
K JOWLS.
New
RE RIBS.
Choice
LY BEEF.
ES,
TURNIPS,
CABBAGE
ST. JOHN.
St. & LeMarchant
Road.