

Just Received

A large shipment of **Garden Tools**, consisting of

RAKES, HOES, POTATO HOOKS, TURF EDGERS, DUTCH HOES, SPADING FORKS, MANURE FORKS, HAY FORKS, MATTOCKS, PLANET JR. CULTIVATORS, GRASS SHEARS, TROWELS, ETC.



BOWRING BROTHERS, Limited,
HARDWARE.

We are still showing a splendid selection of

Tweeds and Serges.

No scarcity at **Maunder's.**

However, we beg to remind our customers these goods are selling rapidly, and cannot be replaced at the same price.



John Maunder,
Tailor and Clothier St. John's, Nfld.

SUGAR.

LIGHT CRYSTAL.	BROWN.
PEA BEANS.	BABY LIMAS.
3 and 2 Crown CAL. RAISINS.	EVAPORATED APPLES.
SEEDED RAISINS.	EVAPORATED APRICOTS.
200 lb. Sax.	Siam (Whole) RICE.
100 lb. Sax.	
50 lb. Sax.	
12 1/2 lb. Sax.	MARMALADE, 1 & 2 lb. Glass and 7 lb. Tins.
JAMS, 12 oz. and 16 oz. Glass.	BEECHNUT BACON.
SINCLAIRS HAMS & BACON.	DATES, Excelsior & Dromedary.
CAMPBELLS SOUPS.	

BOWRING BROTHERS, Limited,
332 GROCERY, St. John's. 332.
June 14, 1911

The "Evening Telegram" is read by over 40,000 People daily.



Stylish SUITS!

If you can wear a Military Uniform do so; if you cannot, you cannot do better than select one of the many

Stylish Suits

we have to offer.

We will be pleased to show you our stock because the values are right.

Robert Templeton.

BIG

Shipment of engines due to arrive shortly from New York.

ARROW

2 cycle jump spark engines. Sizes 2 and 4 H.P.

SNAPPER

4 cycle medium and heavy duty engines. Sizes 5 to and 5 H.P.

PEERLESS

4 cycle medium and heavy duty engines. Sizes 5 to 35 H.P.

Of the above engines only 18 are unsold, and all parties wanting early delivery should order at once to avoid disappointment. Engines are hard to obtain and shipping difficulties are causing great delay, so we are fortunate in obtaining these motors for prompt delivery.

WM. H. TRASK,

Corner Water St. & Job's Cove. P. O. Box 278.
apr 20, 3m, w, s

On the Spot

200 Boxes Prime Canadian Cheese.

GEO. NEAL



NO MATTER HOW THE FIRE IS CAUSED

if you're not insured, you're a loser. Take time to see about your policies. We give you the best companies and reasonable rates.

PERCIE JOHNSON
Insurance Agent.

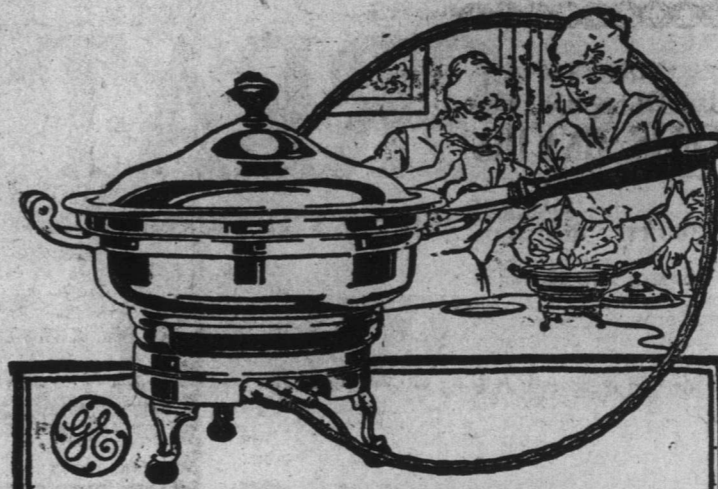
J. J. ST. JOHN.

500 Bags Mixed and White Oats.
250 Bags White Hominy Feed.
150 Bags Bran.
250 Bags Feed Meal, at \$5.50.
100 Bags Whole Corn.
50 Bags Stock Feed.
100 Boxes Blue Raisins, 50's.
175 Boxes Seeded Raisins, 15c. pkg.
75 Boxes Currants, 20c. lb.

J. J. ST. JOHN,

DUCKWORTH ST. & LAMARCHANT ROAD.

Advertise in the "Telegram."



A Really Useful Chafing Dish

Everyone wants a chafing dish! Why not get one that is more than a buffet ornament? The G-E chafing dish is always ready. No flame, no fuss, no danger—simply connect to the nearest socket and turn on the current. The G-E chafing dish is of plain, substantial design—handsome and of guaranteed quality.

Reid-Nfld. Co.,
Electrical Department.
Phone 40.

VICTOR ENGINE!

The Right Engine for your boat. Before you buy an Engine of any size or type let us sell you about the Victor, one of the best in the world. Easy to operate, easy to run—the Victor Engine is the best for your boat. Perfectly new, not rebuilt, and look under at the prices of them. You know you get a bargain in those Victor Engines. We know it.

Prices to meet all competitions as follows:

2 H.P. 1 Cylinder....	\$130.00
4 H.P. 2 Cylinder....	160.00
6 H.P. 3 Cylinder....	195.00
8 H.P. 2 Cylinder....	220.00
12 H.P. 3 Cylinder....	280.00
16 H.P. 3 Cylinder....	300.00

It is the aim of the Company to see not only Victor satisfaction but power. Don't say it's too late to buy a Victor Engine because it's not at that price. If you are interested in those Motors send to R. B. & F. Rideout, or call at the office. Open day and night. Easy terms given. This price is only guaranteed for two weeks.

R. B. & F. Rideout,
Office: 12 Gear Building.

THE LONDON DIRECTORY,
(Published Annually)

ENABLES traders throughout the English World to communicate direct with **MANUFACTURERS & DEALERS** in each class of goods. Besides being a complete commercial guide to London and its suburbs the Directory contains lists of

EXPORT MERCHANTS with the goods they ship, and the Colonial and Foreign Markets they supply;

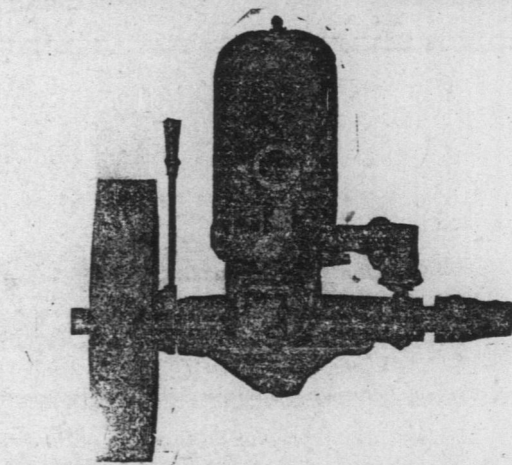
STEAMSHIP LINES arranged under the Ports to which they sail, and indicating the approximate sailings;

PROVINCIAL TRADE NOTICES of leading Manufacturers, Merchants, etc., in the leading provincial towns and industrial centres of the United Kingdom.

A copy of the current edition will be forwarded, freight paid, on receipt of Postal Orders for 25s. Dealers seeking Agencies can advertise their trade cards for £1, or larger advertisements from £2.

The London Directory, Company, Ltd.,
25, Abchurch Lane, London, E.C.

When you want something in a hurry for tea, go to **ELLIS'**—Head Cheese, Ox Tongue, Boiled Ham, Cooked Corned Beef, Bologna Sausage.



KNOCK DOWN MOTOR ENGINES!

4 H.P. 2 CYCLE	\$110.00
8 H.P. 2 CYCLE, 2 CYLINDER	\$175.00

A new idea in Motors. We have secured the agency for the celebrated "Knock Down" Motor Engines. Each part of these engines is made so perfect that it is not necessary to assemble and test the engine before shipment. You save the cost of all that work by doing the work yourself.

WATERPROOF ENGINES!

Here is what you have been looking for, a special Four Cycle Engine, specially fitted with a waterproof ignition system, at a price to meet all competitions.

1 CYLINDER 2 HORSE POWER	\$ 70.00
2 CYLINDER 4 HORSE POWER	120.00
2 CYLINDER 8 HORSE POWER	190.00
3 CYLINDER 6 HORSE POWER	175.00
3 CYLINDER 12 HORSE POWER	240.00
4 CYLINDER 16 HORSE POWER	295.00

These Engines come set up ready for use.

ST. LOUIS CASH REGISTERS!

TOTAL ADDING CAPACITY, \$10,000.00

No. 38—Single Sale, 5c. to \$1.95. Price Landed	\$60.00
No. 42—Single Sale, 5c. to 4.95. Price Landed	70.00
No. 43—Single Sale, 1c. to 9c. Price Landed	70.00
No. 41—Single Sale, 5c. to 4.95. Price Landed	95.00
No. 44—Single Sale, 1c. to 4.99. Price Landed	105.00
No. 40—Single Sale, 1c. to 4.99. Price Landed	110.00
No. 50—Single Sale, 5c. to 24.95. Price Landed	135.00

Simplest Register made, guaranteed for two years. Terms: one-half cash, balance on arrival.

DAYTON MONEY WEIGHT SCALES!

The best computing scale on earth, will outwear any other style of computing scale. By giving us your order you secure the services of our computing scale expert, with a factory training. We can also supply any other style of Scale up to 50 tons capacity. Also Hand Trucks and Wheel Trucks for warehouse and factory use.

ELECTRIC LIGHTING!

We are the sole agents for the celebrated UNILECTRIC MACHINE, the only machine of its kind made. Can be used with or without batteries.

We also install Gasolene Lighting Systems.

NOTE.—We are Sole Agents for Dayton Scales in Newfoundland.

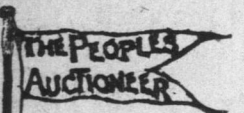
THE NEWFOUNDLAND SPECIALTY CO.,
246 WATER STREET,
UP STAIRS.

Forty Years in the Public Service—The Evening Telegram

TEN PAGES TO

WEATHER FORECAST.
TORONTO, Noon.—Moderate South westerly and West winds, a few local showers, but mostly fair and moderately warm to-day and on Wednesday.

VOLUME XL.



AUCTION.

At the British Hall, on Thursday next 20th inst., at 10 a.m. sharp, a quantity of superior furniture, consisting of Mahogany drawing room and oak dining room suites, Buffet, China Cabinet, handsome Wilton squares, Cut Glass, Mahogany and Oak bedroom furniture, bedsteads and mattresses, handsome electric shades, good pictures, one new electric range, never used; one second hand gas ditto, and other effects.

P. C. O'DRISCOLL,
June 18, 21 AUCTIONEER.

Masonic Notice!



Emergency Meetings of St. John's Lodge, No. 579, Avalon Lodge, No. 776, Lodge Tasker, No. 454, Whiteway Lodge, No. 3541, and Lodge St. Andrew, No. 1139, will be held in the Masonic Temple, on Sunday afternoon, the 23rd inst., at 2.45 o'clock sharp, for the purpose of attending Divine Service in St. Andrew's Presbyterian Church. The Sermon will be preached by the Rev. Gordon Dickie, Chaplain of Lodge Tasker. A collection will be taken in aid of the Tasker Educational Fund.

R. JEANS, W.M.,
St. John's Lodge, No. 579, E. C.
GEO. E. TAYLOR, W.M.,
Avalon Lodge, No. 776, E. C.
A. MUNN, R.W.M.,
Lodge Tasker, No. 454, S. C.
LLOYD CHAPLIN, W.M.,
Whiteway Lodge, No. 3541, E. C.
C. EMERSON, R.W.M.,
Lodge St. Andrew, No. 1139, S.C.
An Emergency Meeting of Shannon Chapter, No. 9, R.N.S., will be held for the same purpose at the same time and place.
W. H. HYNES, H. P.
June 15, 41, s, t, u, h, s

Now Landing:

50,000

Red Brick.

H. J. Stabb & Co.

Auto Owners!

PLEASE TAKE NOTICE. The speed of your car at Bowring Park is not to exceed 10 miles per hour. Parties violating this rule will be prosecuted.

A. E. CANNING,
June 14, 31 Supt.