

Bank of Canada have branches in Nelson, while several of the chief loan companies and most of the principal insurance companies are represented by local agencies.

The constant and efficient supply of water and electricity for power purposes are of much benefit to manufacturers, and several industries are carried on by these means, among the principal of which are the shops of the Nelson Iron Works, and the Kootenay Engineering Works, both employing a considerable number of men and enlarging their buildings and plant to meet the demands from the increasing trade in mining and lumbering.

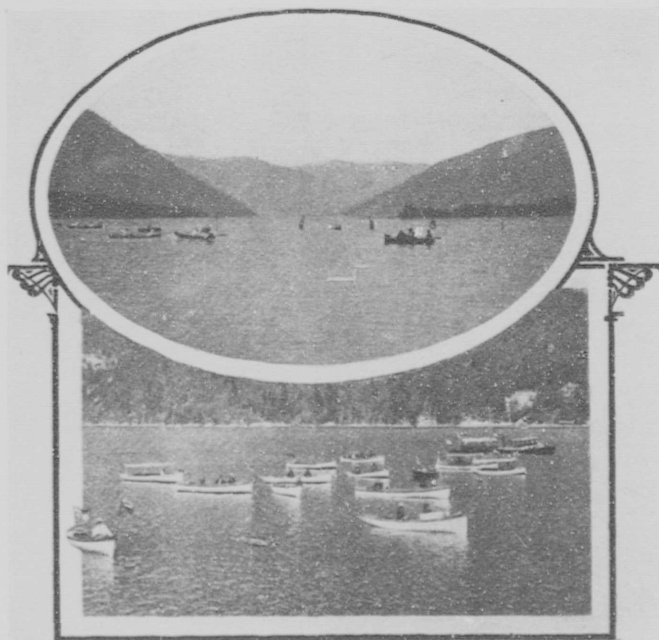
The Canadian Pacific Railway Company has its chief divisional point for the district here, and a large number of men are employed in the general offices, freight sheds, repair shops and upon their steamers which make this their principal port, as well as at their ship-

building yards, where repairs to their fleet and the building of new steamers and barges are carried on.

The smelter of the Hall Mining Co. is situated conveniently to the city, but fortunately so placed as not to affect it with any of the disadvantages associated with such a plant. About 125 men are constantly employed in the operations that are carried on day and night.

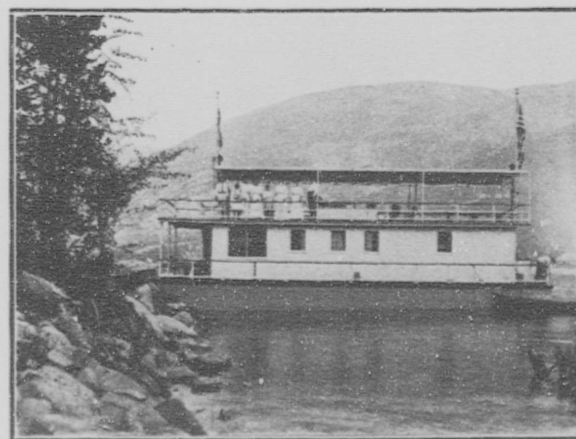
A saw mill belonging to the Yale-Columbia Lumber Co. is also operated here, and apart from a large shipping trade, supplies the local requirements. The Royal Lumber Company, composed mainly of enterprising American capitalists who own large limits on Kootenay Lake, have projected the construction of a large mill at Nelson. The Porto Rico Lumber Co., another local company, has also under contemplation the erection and operation of a large mill in or near Nelson, while the Yale-Columbia Co. have in view the carrying out of considerable improvements and extensions.

Several other industries, among which may be mentioned the gas works, the Nelson Brewing Company, with its extensive building and modern plant; soda water factories, wire and mattress factories, marble works, etc., are established in Nelson. The improved



ONE OF THE FINEST BOATING COURSES IN THE WORLD.
THE LAKE AT NELSON.

(11)



AN AMERICAN HOUSE BOAT PARTY CAMPED
OPPOSITE NELSON.

(12)